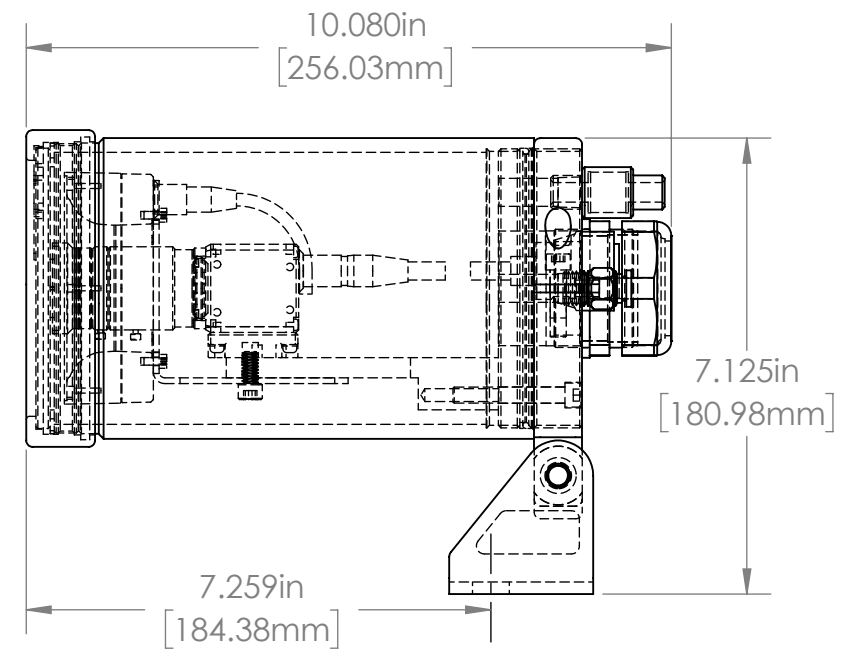
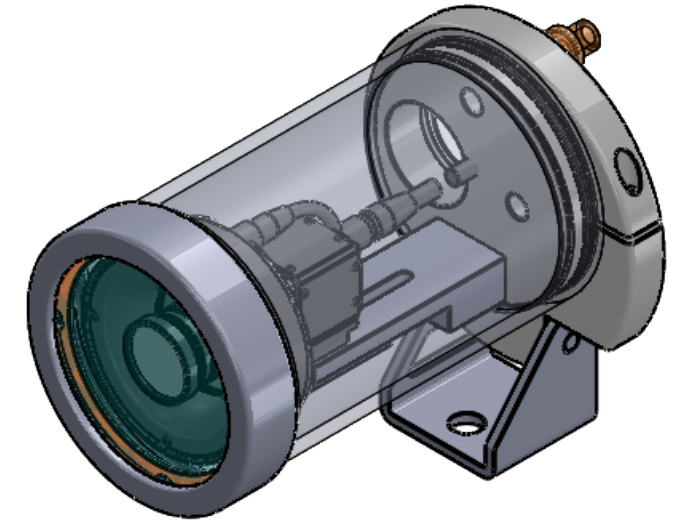
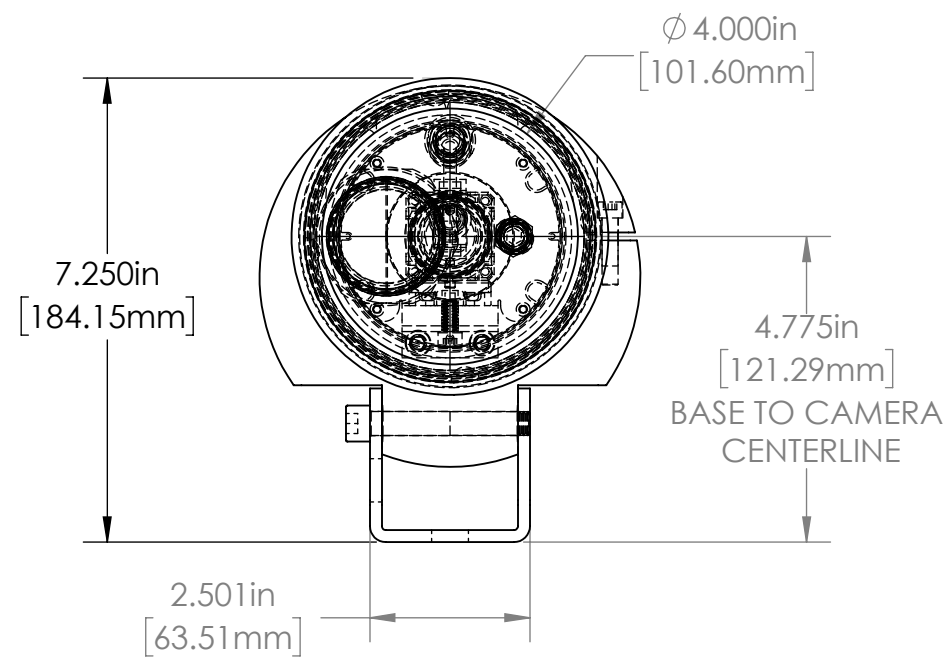
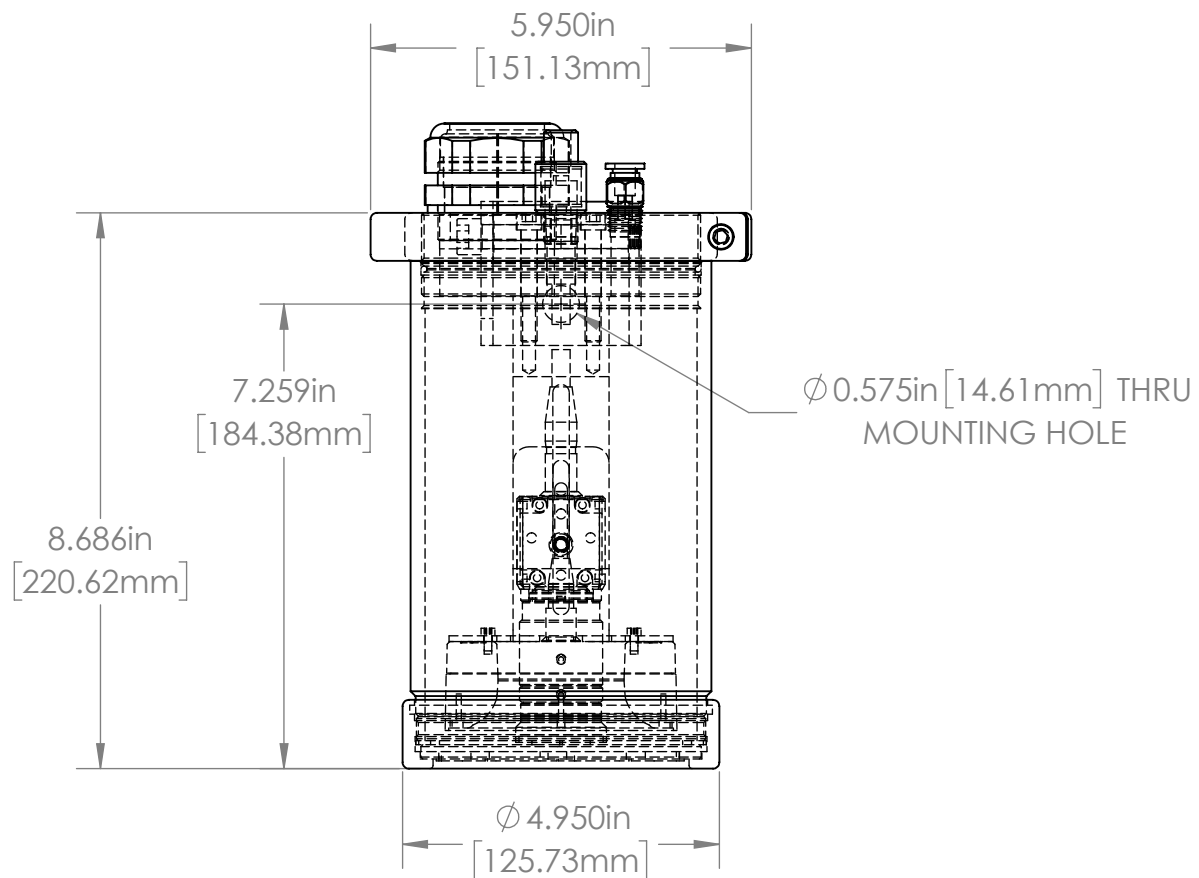


				UNLESS OTHERWISE SPECIFIED: DIMENSIONS ARE IN INCHES SURFACE FINISH: TOLERANCES: .000= +/- 0.005" .00= +/- 0.010"		FINISH: DEBUR AND BREAK SHARP EDGES		Allison Park Group, Inc. (APG) 4055 Alpha Drive Allison Park, PA 15101 USA Phone +1 (412) 487-8211 Fax +1 (412) 486-3157 www.apgvision.com MATERIAL: 6061 T6 ALUMINUM HARDCOAT ANODIZED WEIGHT:	DO NOT SCALE DRAWING		REVISION	
				LINEAR:					This document is the property of APG and is considered company confidential. The information in this document is the property of APG and may not be used, reproduced, or distributed in whole or in part without the prior written permission of APG			
					NAME	SIGNATURE	DATE		TITLE:			
				DRAWN	SCHUBERT		8/16/2010		47C-AC ASSY DIMS (INDUSTRIAL DYNAMICS)			
				CHK'D								
				APPV'D								
				MFG								
				Q.A				DWG NO.	47C-AC		A3	
				NOTES:								
NO.	CHANGE	DATE	INIT.						SCALE:1:5	SHEET 1 OF 1		



TOLERANCES UNLESS OTHERWISE SPECIFIED			
MACHINING		SHEETMETAL	
XX	0.0300	XX	± 0.0
XXX	0.0100	XXX	± 0.020
XXXX	0.0050	XXXX	NOTED
XXXXX	0.0025	XXXXX	ANGULAR 0.5°
ANGULAR	0.5°	DEBURR	ALL EDGES

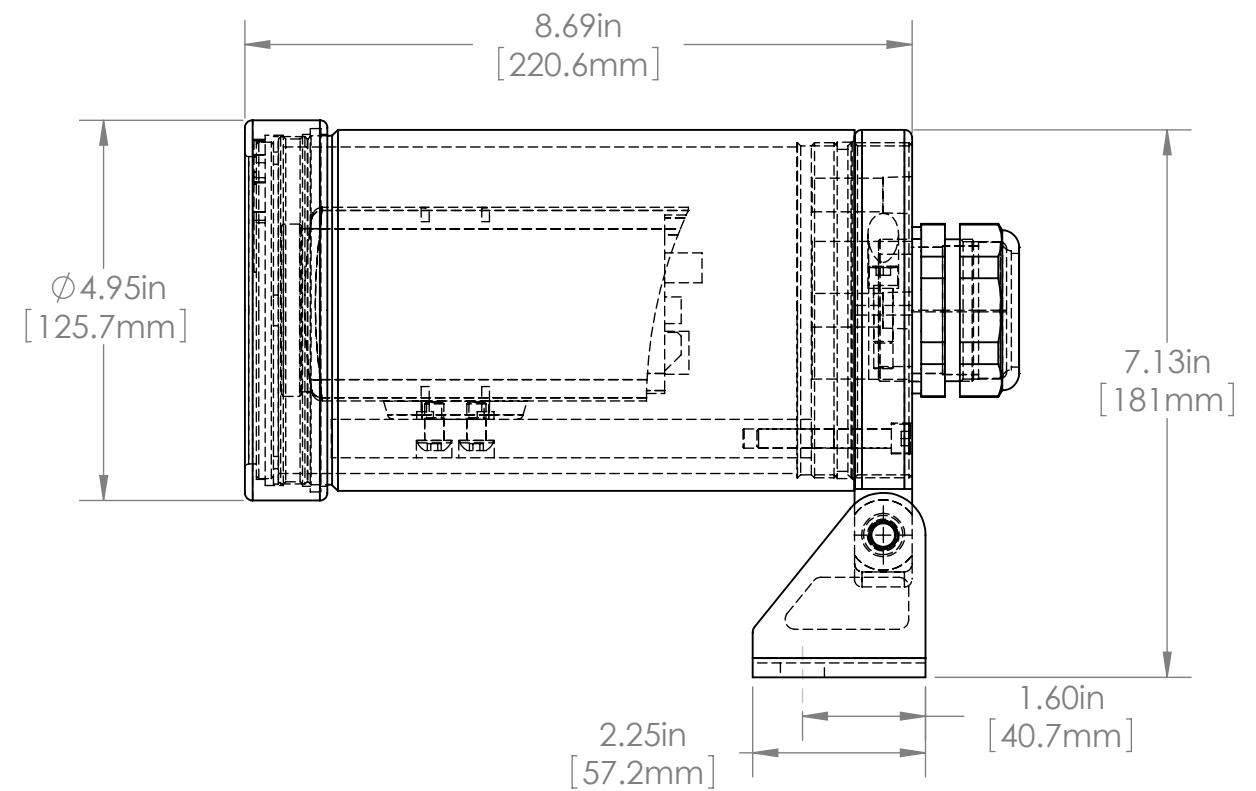
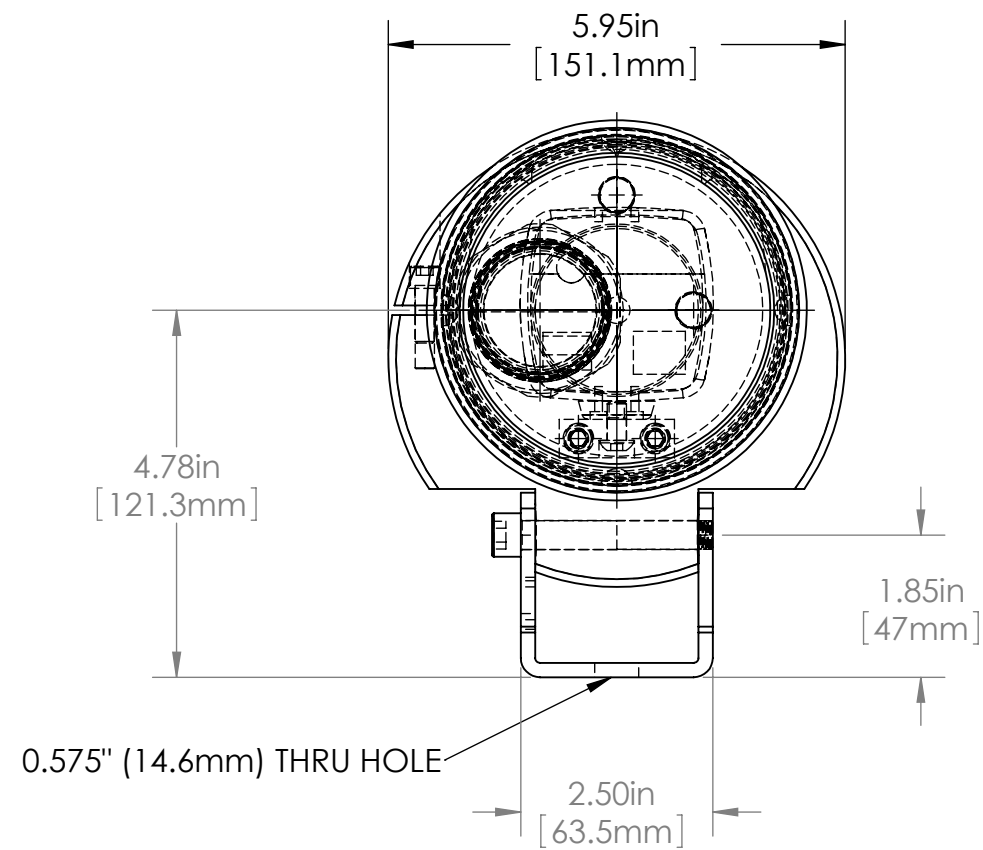
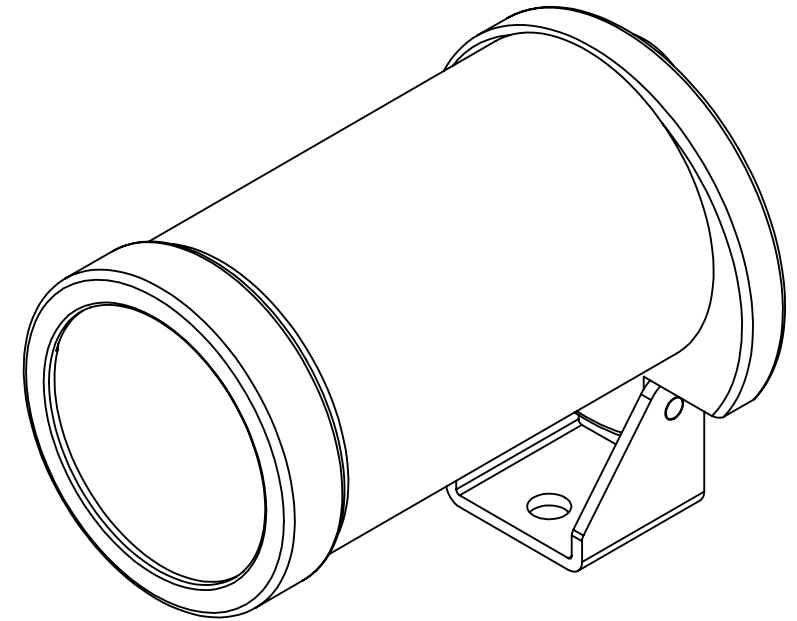
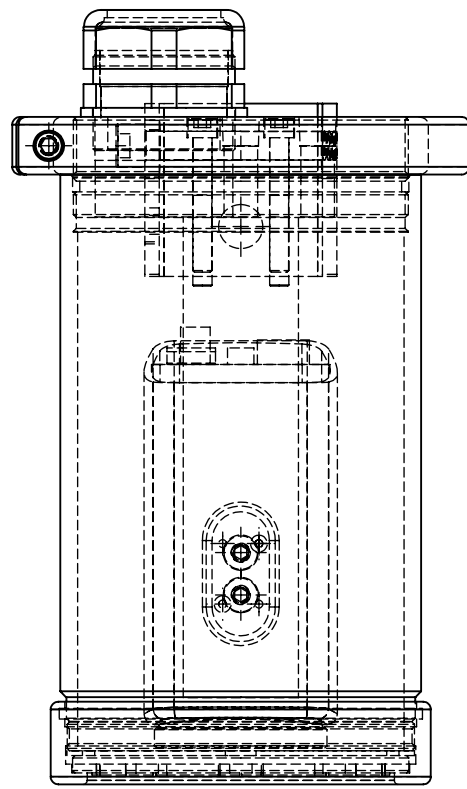
THIS PRINT IS THE PROPERTY OF ALLISON PARK GROUP. THE INFORMATION CONTAINED HEREIN IS CONFIDENTIAL. IT IS NOT TRANSFERABLE. IT IS FURNISHED WITH THE CLEAR UNDERSTANDING THAT IT IS NOT TO BE TRACED, REPRODUCED OR USED IN ANY PROCESS OF MANUFACTURING WITHOUT WRITTEN PERMISSION FROM THE OWNER AND IS RETURNABLE UPON DEMAND. ANY INFRINGEMENT UPON THE PATENT RIGHTS SHOWN HEREIN, WHETHER IN PART OR WHOLE, WILL BE PROSECUTED.

AS PART OF OUR POLICY OF CONTINUING DEVELOPMENT, ALLISON PARK GROUP RESERVES THE RIGHT TO ALTER SPECIFICATIONS WITHOUT PRIOR NOTICE.

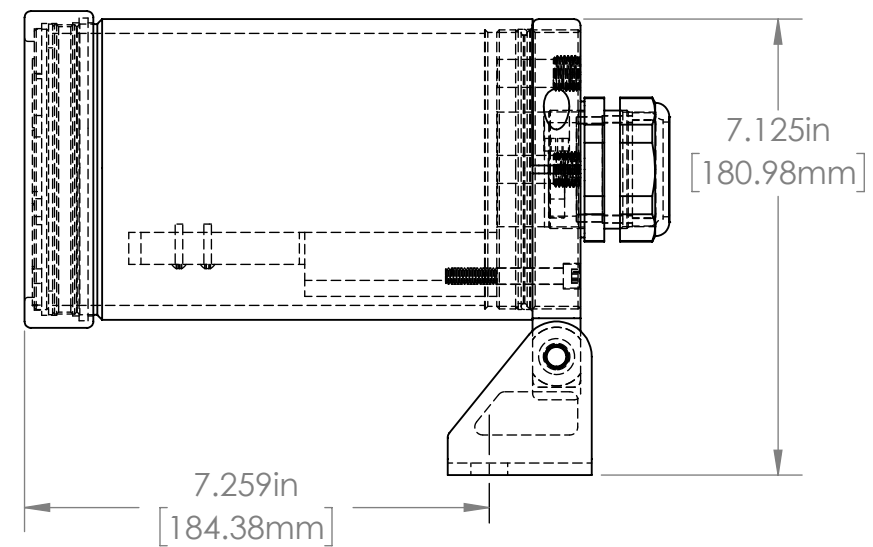
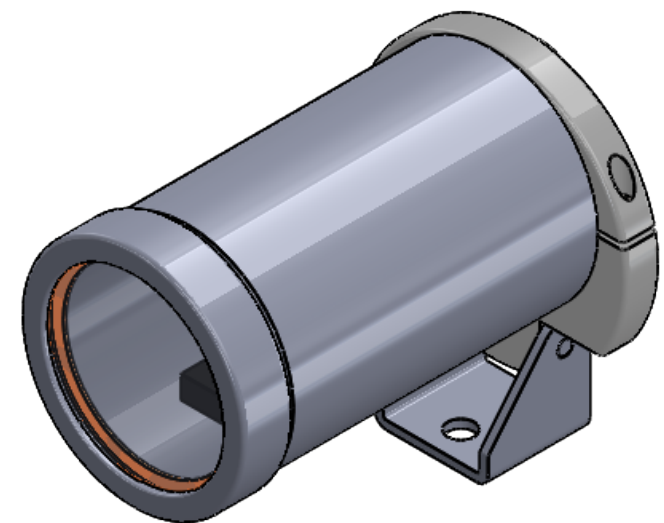
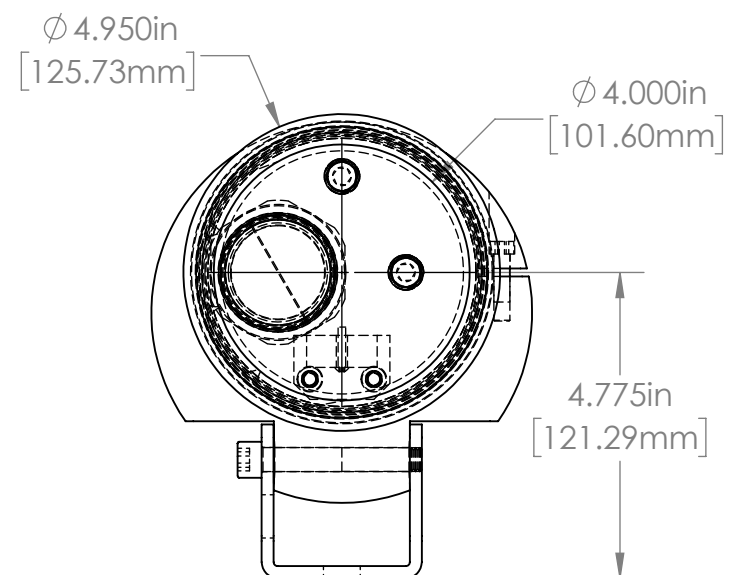
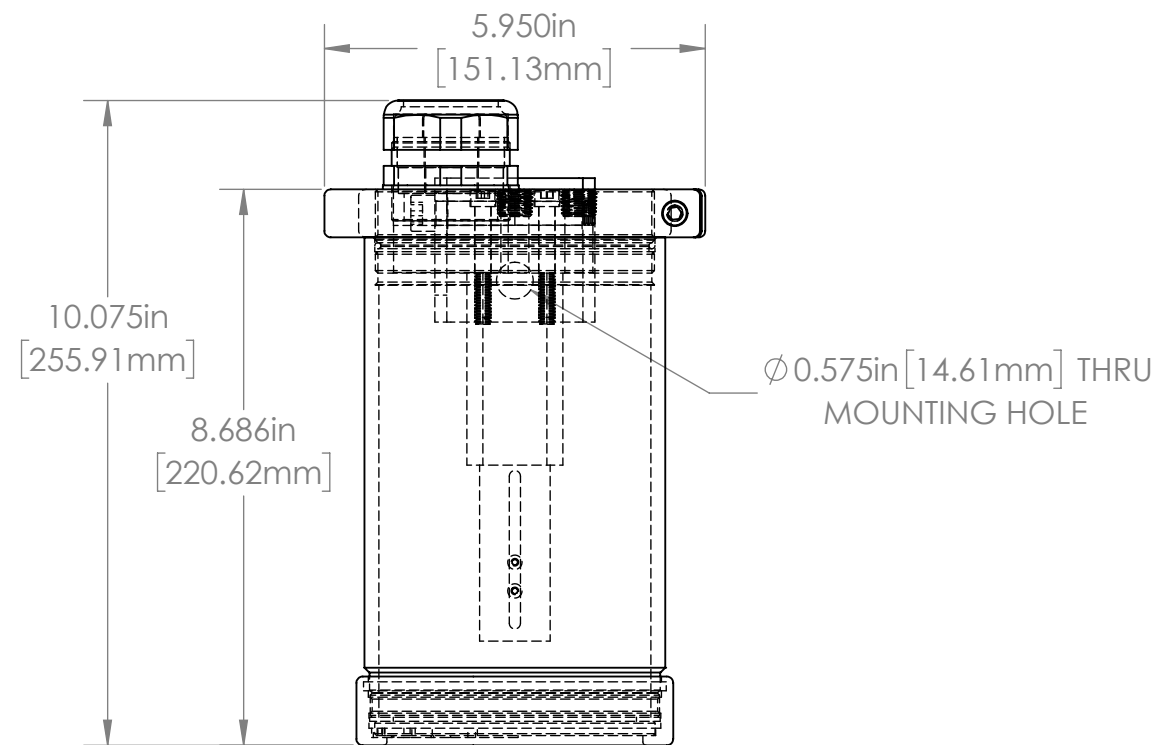


Allison Park Group, Inc. (APG)
4055 Alpha Drive
Allison Park, PA 15101 USA
Phone +1 (412) 487-8211
Fax +1 (412) 486-3157

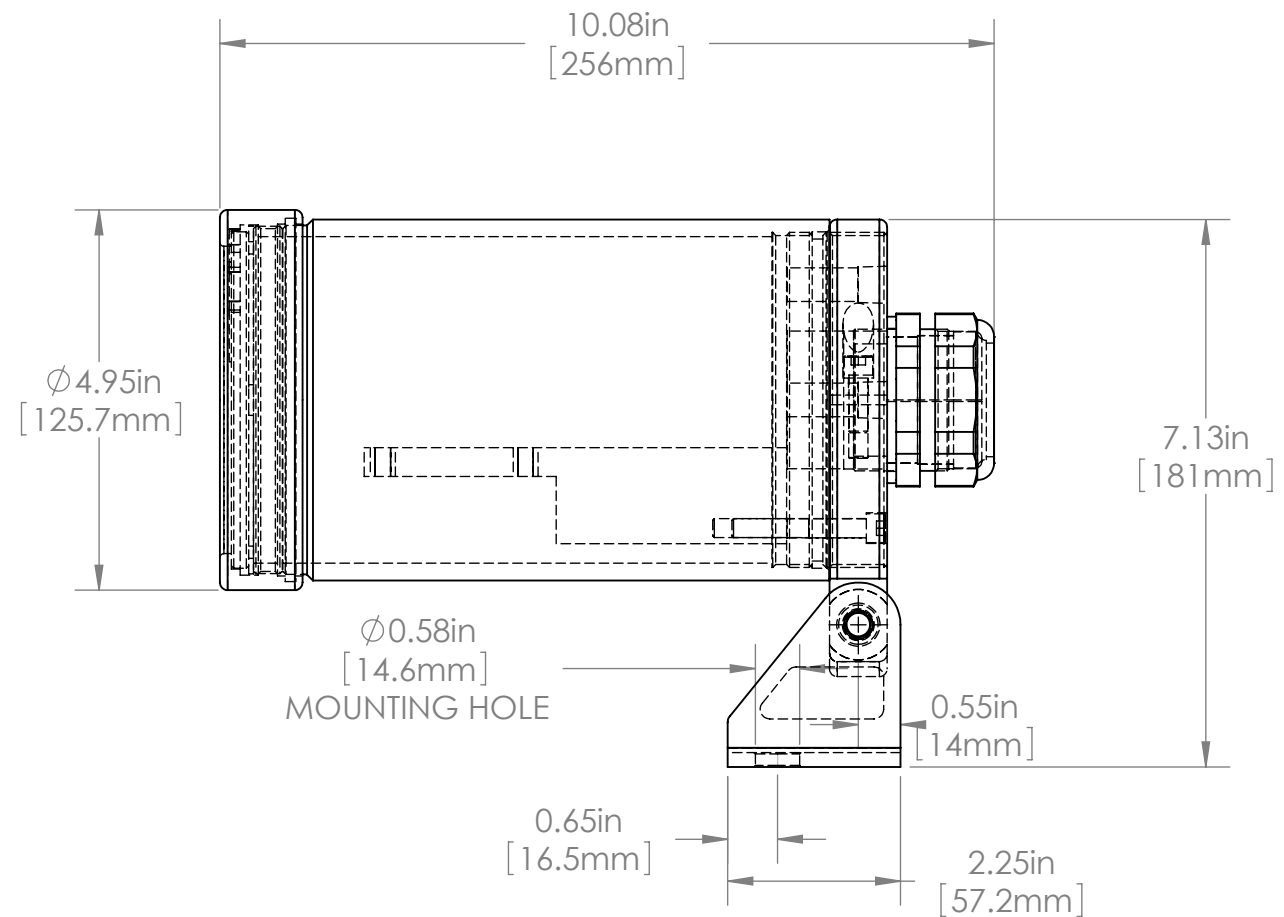
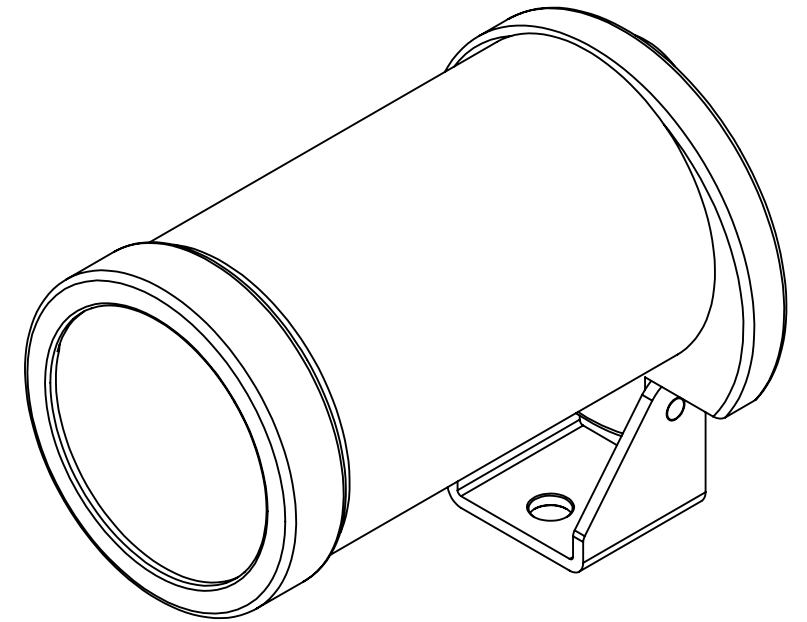
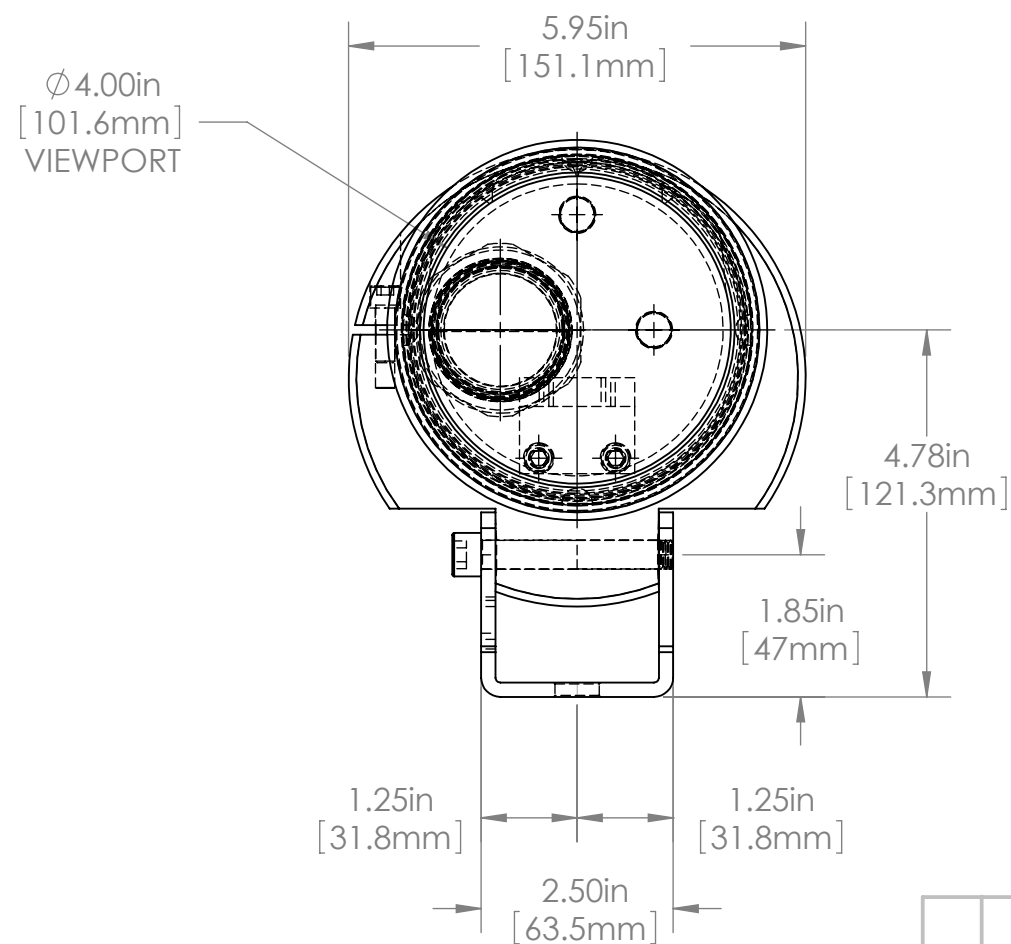
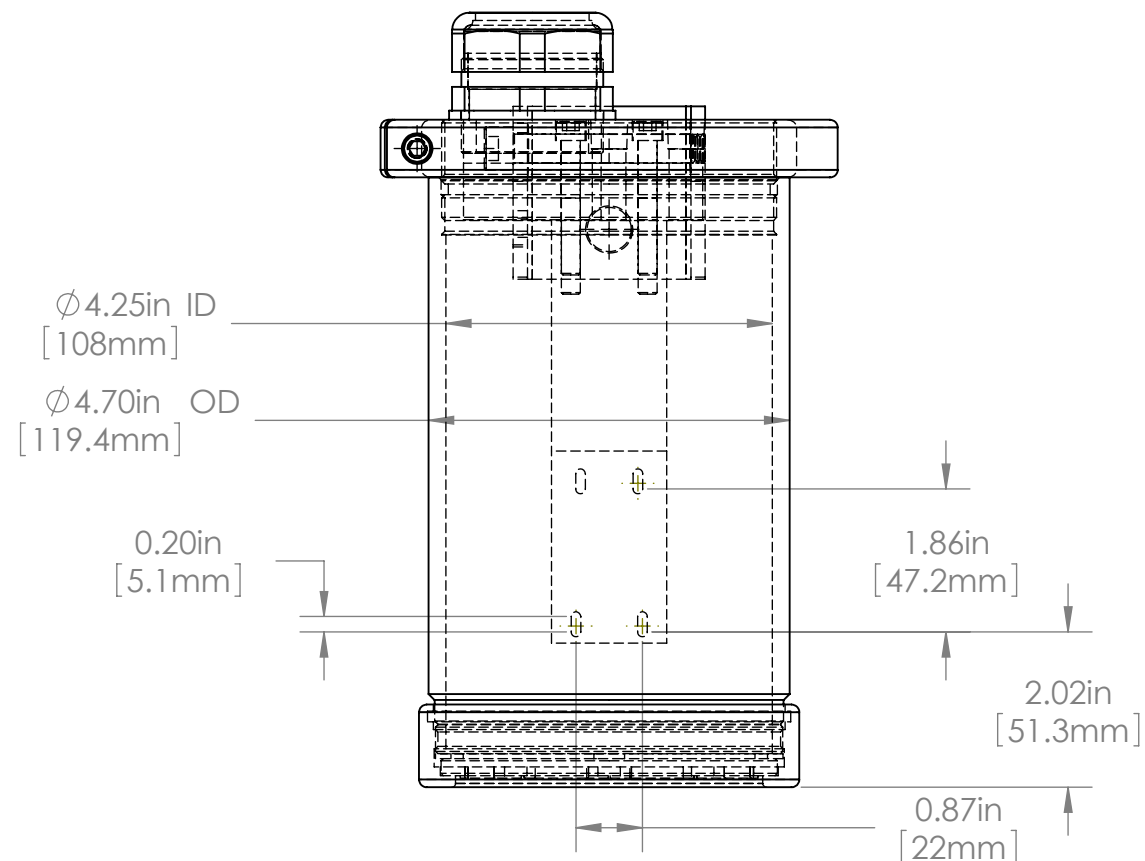
DESCRIPTION: 47C-CE (Keyence CA-HX048 CA-DRW5X acrylic)			
MATERIAL: 6061 AL., ACRYLIC WINDOW, STAINLESS FOOT	APPROX. WEIGHT		
FINISH: CLEAR HARDCOAT ANODIZE			
DRAWN BY: SCHUBERT	DATE: 6/23/2016	SCALE: NTS	SHT-SIZE: B
CHECKED BY:	DATE:	PART NUMBER:	REF. NUMBER:
APPROVED BY:	DATE:	47C-CE Sheet1 of 1	
			REVISION: A



				UNLESS OTHERWISE SPECIFIED: DIMENSIONS ARE IN INCHES SURFACE FINISH: TOLERANCES: .000= +/- 0.005" .00= +/- 0.010"		FINISH:		Allison Park Group, Inc. (APG) 4055 Alpha Drive Allison Park, PA 15101 USA	DO NOT SCALE DRAWING		REVISION	
				LINEAR:		DEBUR AND BREAK SHARP EDGES			This document is the property of APG and is considered company confidential. The information in this document is the property of APG and may not be used, reproduced, or distributed in whole or in part without the prior written permission of APG			
					NAME	SIGNATURE	DATE	Phone +1 (412) 487-8211 Fax +1 (412) 486-3157	TITLE: FOR SAMSUNG SDZ300			
				DRAWN	SCHUBERT		7/16/2010					
				CHK'D				www.apgvision.com	DWG NO. 47C-AA			
				APPV'D								
				MFG				MATERIAL: 6061 T6 ALUMINUM HARDCOAT ANODIZED	SCALE:1:5			
				Q.A								
				NOTES:				WEIGHT:	SHEET 1 OF 1			
NO.	CHANGE	DATE	INIT.									



TOLERANCES UNLESS OTHERWISE SPECIFIED			
MACHINING		SHEETMETAL	
X.X	0.0300	X.X	± 0.0
X.XX	0.0100	X.XX	± 0.020
X.XXX	0.0050	X.XXX	NOTED
X.XXXX	0.0005	X.XXXX	ANGULAR 0.5°
ANGULAR	0.5°	DEBURR	ALL EDGES
ALL WEIGHTS ARE IN POUNDS			
THIS PRINT IS THE PROPERTY OF ALLISON PARK GROUP. THE INFORMATION CONTAINED HEREIN IS CONFIDENTIAL. IT IS NOT TRANSFERABLE. IT IS FURNISHED WITH THE CLEAR UNDERSTANDING THAT IT IS NOT TO BE TRACED, REPRODUCED OR USED IN ANY PROCESS OF MANUFACTURING WITHOUT WRITTEN PERMISSION FROM THE OWNER AND IS RETURNABLE UPON DEMAND. ANY INFRINGEMENT UPON THE PATENT RIGHTS SHOWN HEREIN, WHETHER IN PART OR WHOLE, WILL BE PROSECUTED.			
AS PART OF OUR POLICY OF CONTINUING DEVELOPMENT, ALLISON PARK GROUP RESERVES THE RIGHT TO ALTER SPECIFICATIONS WITHOUT PRIOR NOTICE.			
<div>apg</div> <div>Allison Park Group, Inc. (APG) 4055 Alpha Drive Allison Park, PA 15101 USA Phone +1 (412) 487-8211 Fax +1 (412) 486-3157</div>			
DESCRIPTION: 47C-AB			
MATERIAL: ALUMINUM, STAINLESS, GLASS			APPROX. WEIGHT
FINISH:			
DRAWN BY: OLSON	DATE: 2/13/2017	SCALE: NTS	SHT-SIZE: B
CHECKED BY:	DATE:	PART NUMBER:	REF. NUMBER:
APPROVED BY:	DATE:	47C-AB	
Sheet1 of 1			REVISION: A



				UNLESS OTHERWISE SPECIFIED: DIMENSIONS ARE IN INCHES SURFACE FINISH: TOLERANCES: .000= +/- 0.005" .00= +/- 0.010"		FINISH:		Allison Park Group, Inc. (APG) 4055 Alpha Drive Allison Park, PA 15101 USA	DO NOT SCALE DRAWING		REVISION	
				LINEAR:		DEBUR AND BREAK SHARP EDGES			This document is the property of APG and is considered company confidential. The information in this document is the property of APG and may not be used, reproduced, or distributed in whole or in part without the prior written permission of APG			
					NAME	SIGNATURE	DATE	Phone +1 (412) 487-8211 Fax +1 (412) 486-3157	TITLE: 47C-AE ASSY DIMS (Micro & Light)			
				DRAWN	SCHUBERT		8/17/2010					
				CHK'D								
				APPV'D								
				MFG								
				Q.A				www.apgvision.com	DWG NO.		A3	
				NOTES:								
NO.	CHANGE	DATE	INIT.					WEIGHT:	SCALE:1:5		SHEET 1 OF 1	

Ø4.25in ID
[108mm]

Ø4.70in OD
[119.4mm]

4.75in
[120.8mm]

1.89in
[48mm]

5.95in
[151.1mm]

4.78in
[121.3mm]

1.85in
[47mm]

1.25in
[31.8mm]

1.25in
[31.8mm]

2.50in
[63.5mm]

Ø4.95in
[125.7mm]

11.58in
[294.1mm]

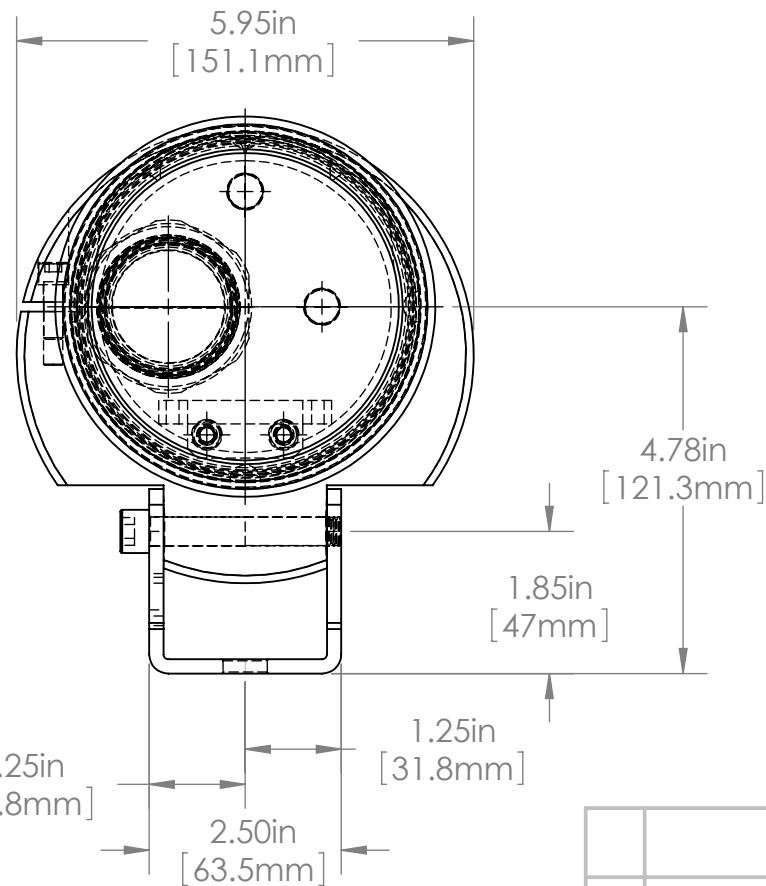
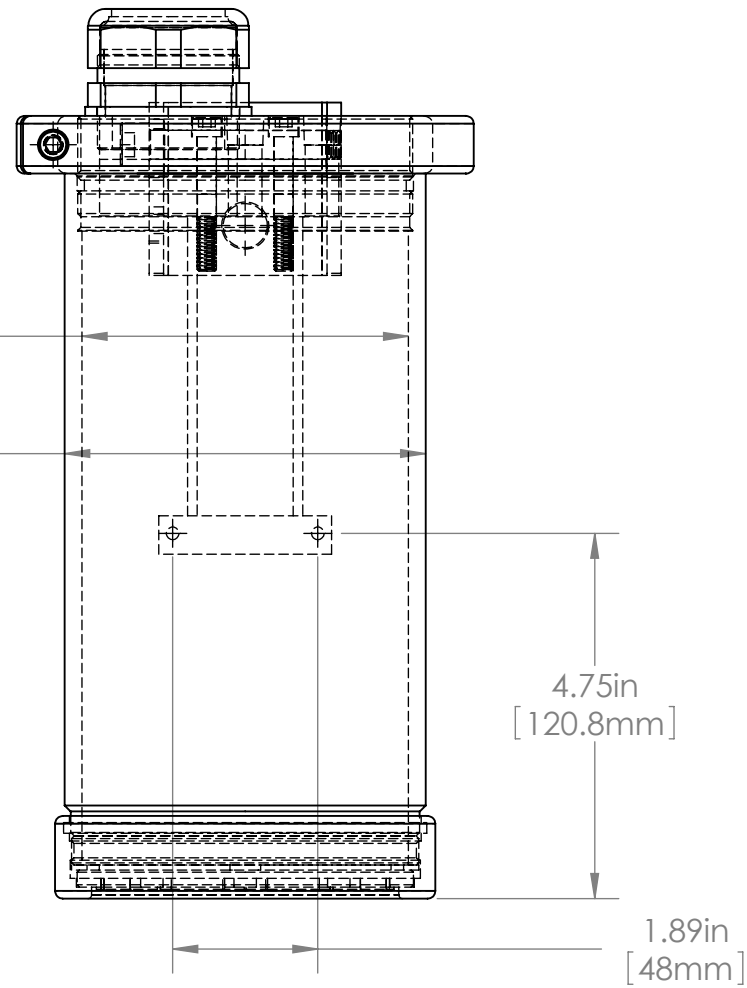
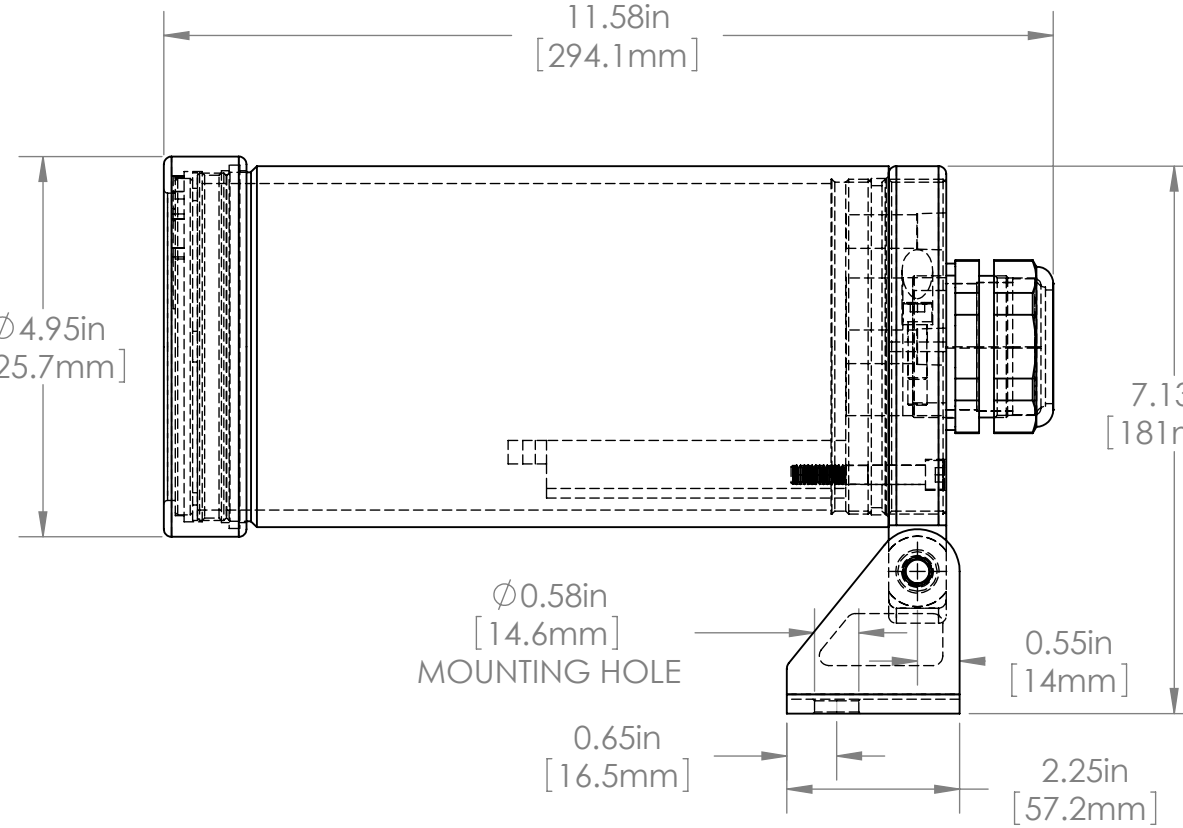
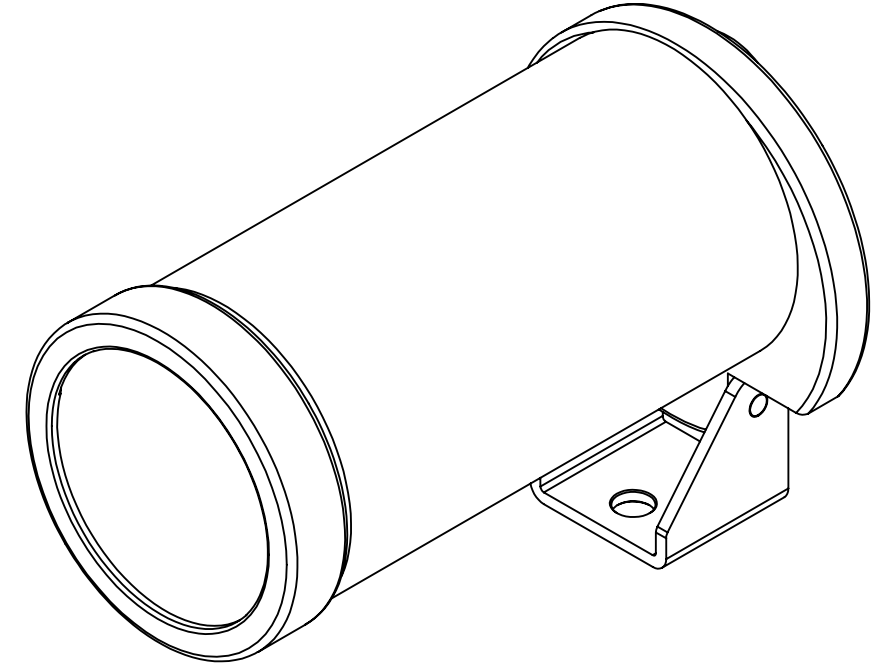
7.13in
[181mm]

Ø0.58in
[14.6mm]
MOUNTING HOLE

0.55in
[14mm]

0.65in
[16.5mm]

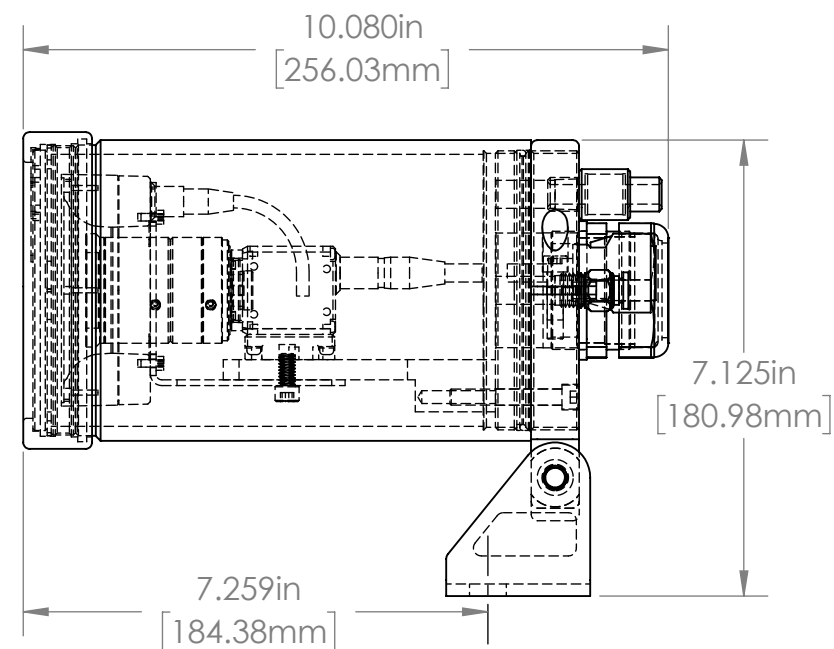
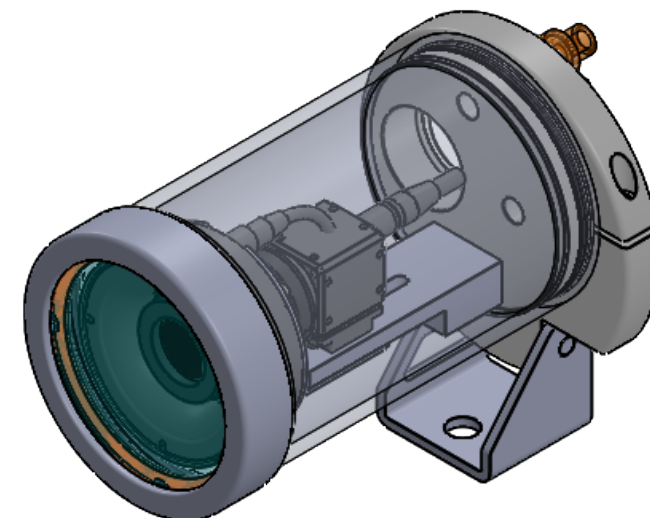
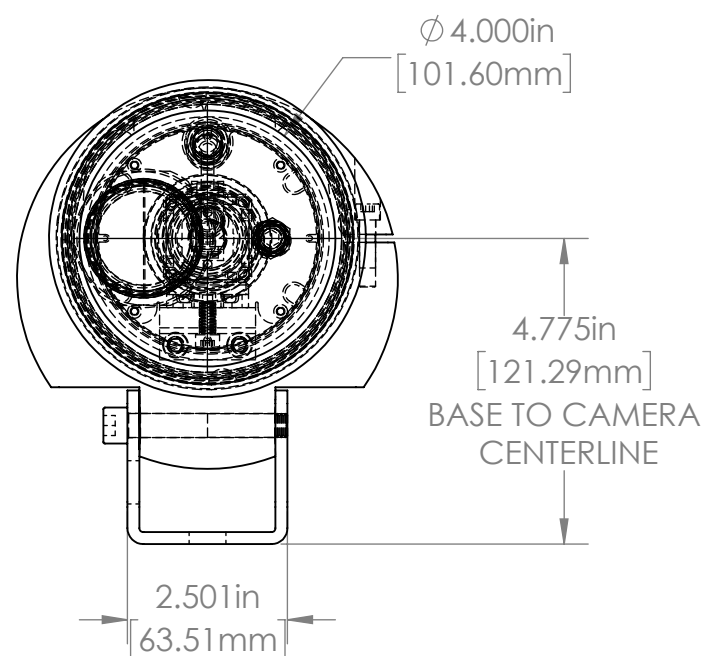
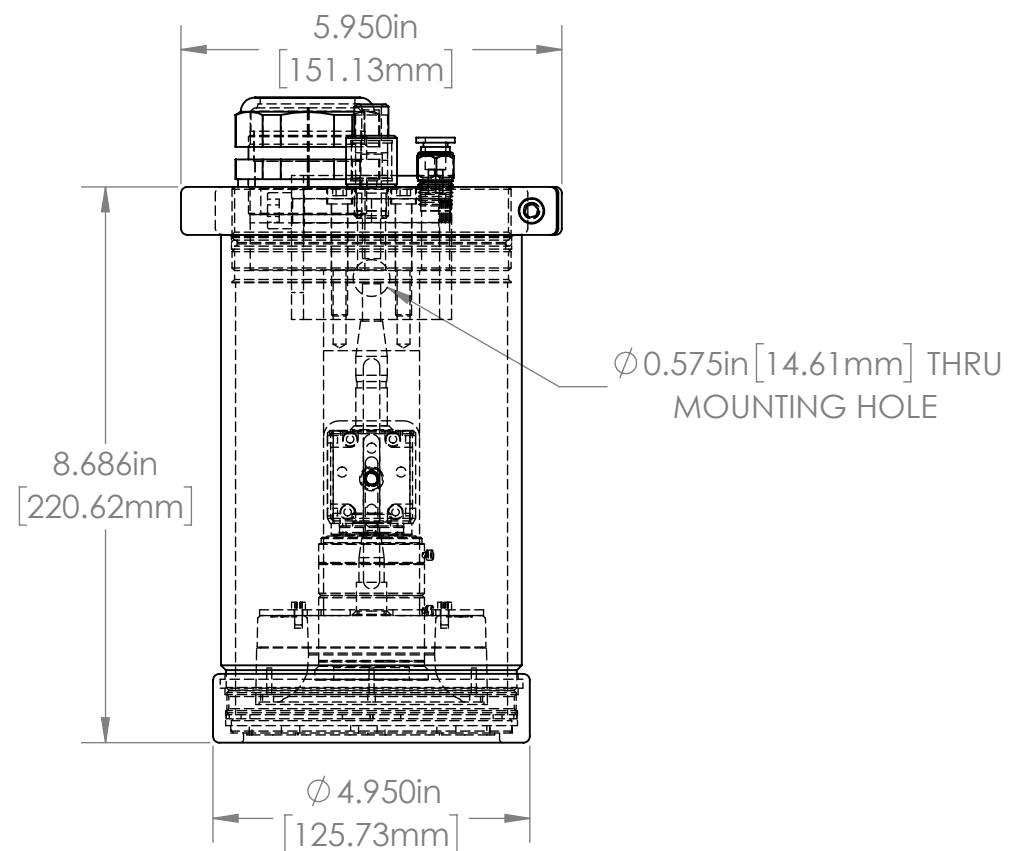
2.25in
[57.2mm]



				UNLESS OTHERWISE SPECIFIED: DIMENSIONS ARE IN INCHES SURFACE FINISH: TOLERANCES: .000= +/- 0.005" .00= +/- 0.010"		FINISH:		Allison Park Group, Inc. (APG) 4055 Alpha Drive Allison Park, PA 15101 USA Phone +1 (412) 487-8211 Fax +1 (412) 486-3157 www.apgvision.com MATERIAL: 6061 T6 ALUMINUM HARDCOAT ANODIZED WEIGHT:	DO NOT SCALE DRAWING		REVISION	
				LINEAR:		DEBUR AND BREAK SHARP EDGES			This document is the property of APG and is considered company confidential. The information in this document is the property of APG and may not be used, reproduced, or distributed in whole or in part without the prior written permission of APG			
					NAME	SIGNATURE	DATE		TITLE:			
				DRAWN	SCHUBERT		8/17/2010		47C-AF ASSY DIMS (Basler Linescan)			
				CHK'D					47C-AF			
				APPV'D								
				MFG								
				Q.A					DWG NO.		A3	
				NOTES:								
NO.	CHANGE	DATE	INIT.								SCALE:1:5	SHEET 1 OF 1



				UNLESS OTHERWISE SPECIFIED: DIMENSIONS ARE IN INCHES SURFACE FINISH: TOLERANCES: .000= +/- 0.005" .00= +/- 0.010"	FINISH:		Allison Park Group, Inc. (APG) 4055 Alpha Drive Allison Park, PA 15101 USA	DO NOT SCALE DRAWING	REVISION	
				LINEAR:	DEBUR AND BREAK SHARP EDGES			This document is the property of APG and is considered company confidential. The information in this document is the property of APG and may not be used, reproduced, or distributed in whole or in part without the prior written permission of APG		
					NAME	SIGNATURE	DATE	Phone +1 (412) 487-8211 Fax +1 (412) 486-3157 www.apgvision.com	TITLE: <div>47C-AG ASSY DIMS (Opteon WAFR & ringlight)</div>	
				DRAWN	SCHUBERT		8/17/2010			
				CHK'D						
				APPV'D						
				MFG						
				Q.A				MATERIAL: 6061 T6 ALUMINUM HARDCOAT ANODIZED	DWG NO. 47C-AG	
				NOTES:						
NO.	CHANGE	DATE	INIT.				WEIGHT:	SCALE:1:5	SHEET 1 OF 1	



TOLERANCES UNLESS OTHERWISE SPECIFIED			
MACHINING		SHEETMETAL	
XX	0.0300	XX	± 0.0
XXX	0.0100	XXX	± 0.020
XXXX	0.0050	XXXX	NOTED
XXXXX	0.0025	XXXXX	ANGULAR 0.5°
ANGULAR	0.5°	ANGULAR	DEBURR ALL EDGES

ALL WEIGHTS
ARE IN POUNDS

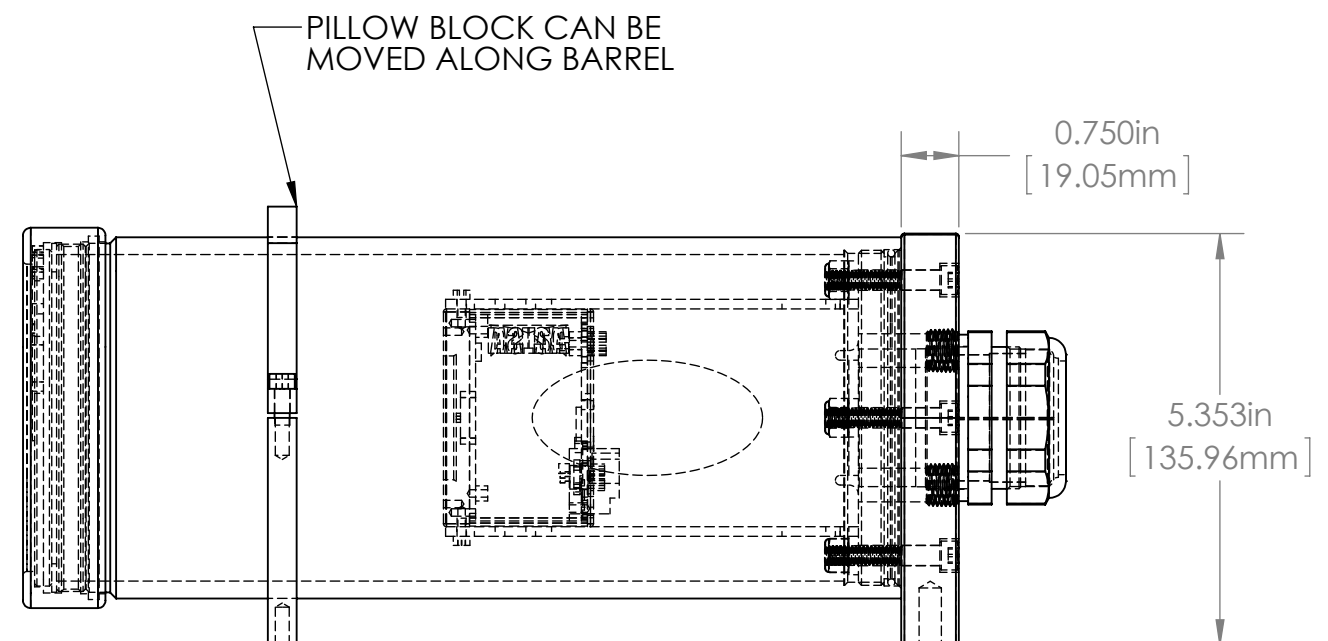
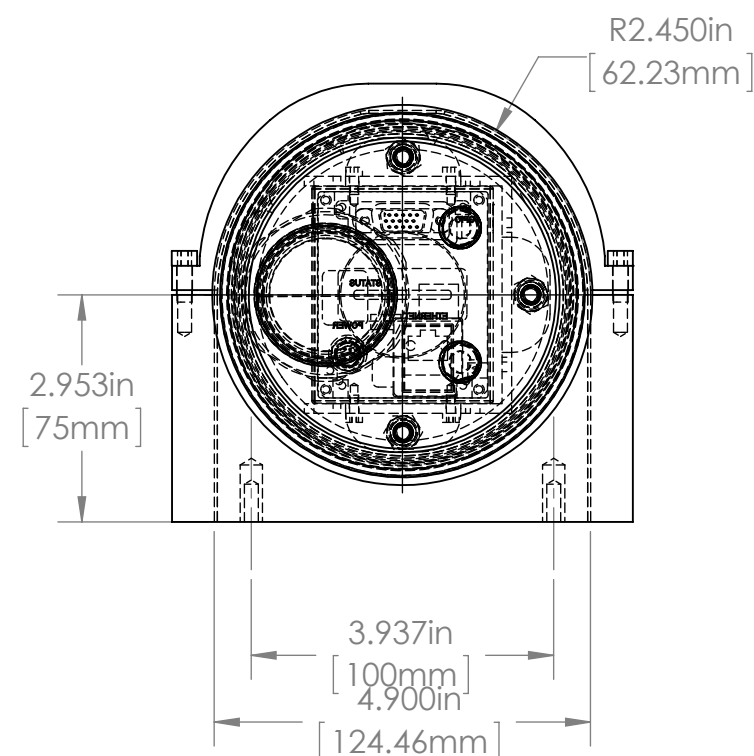
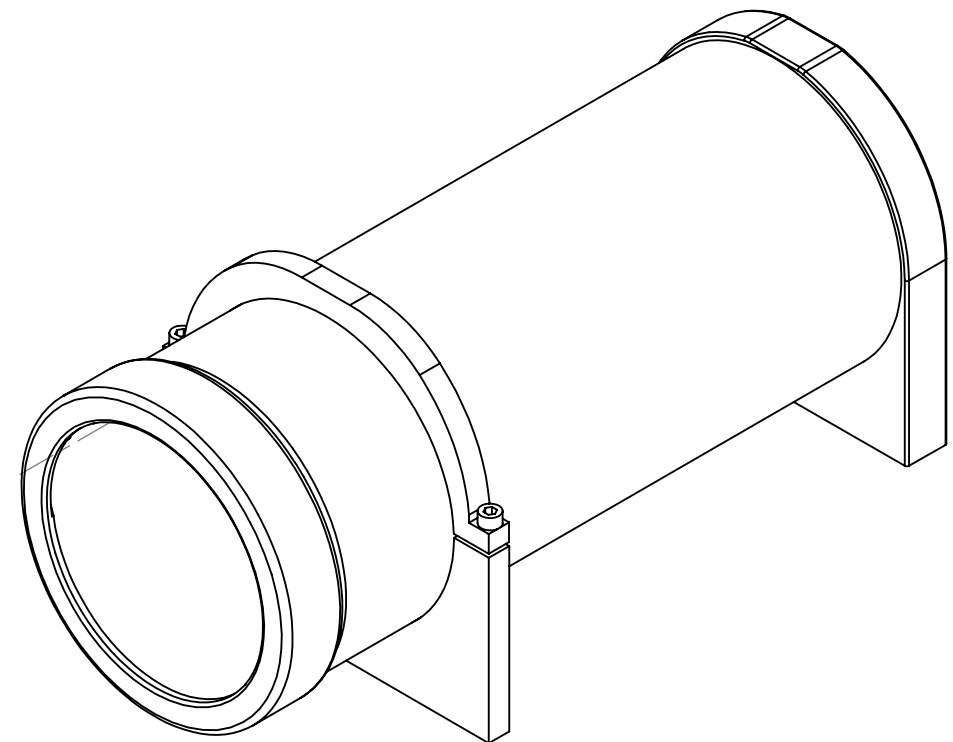
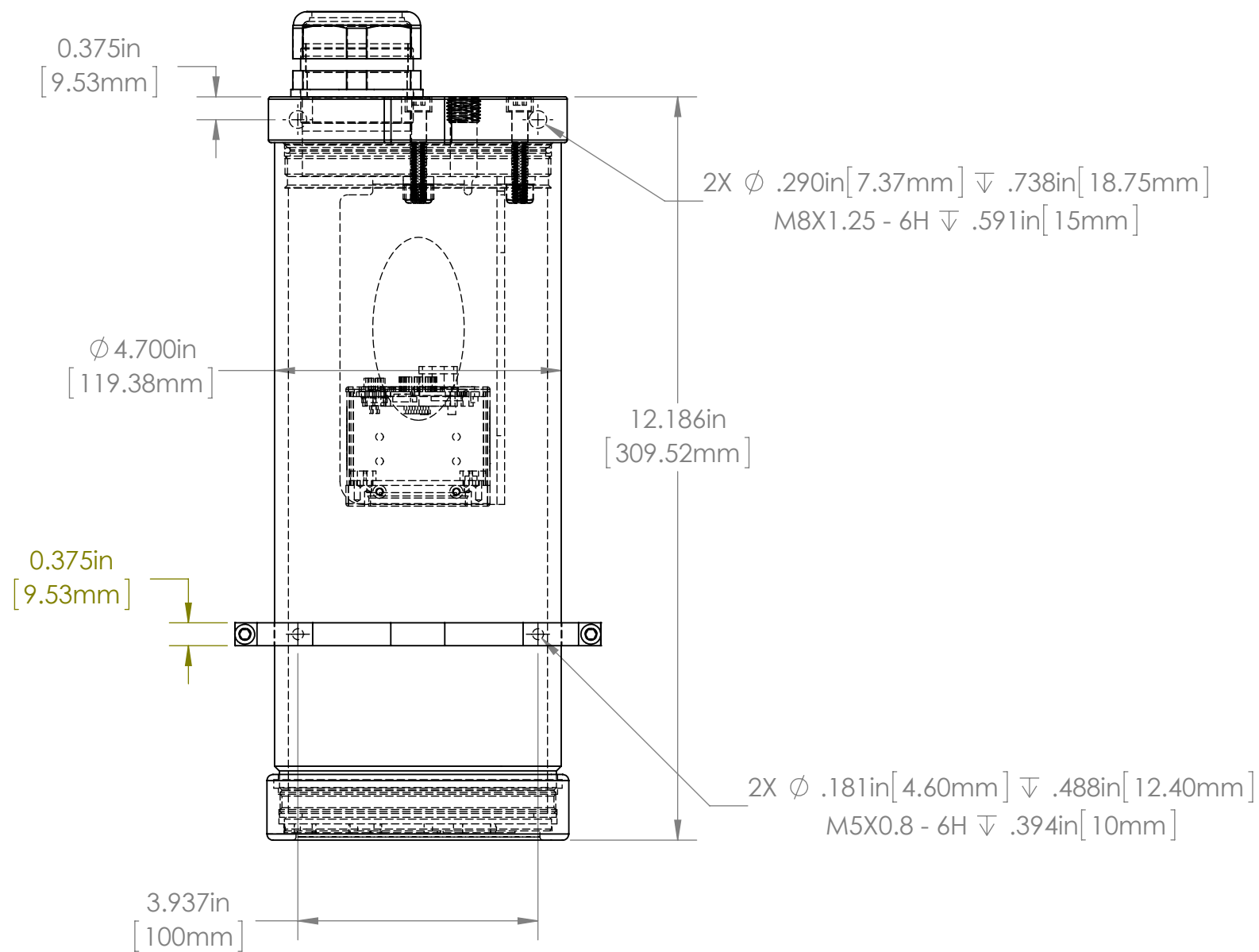
THIS PRINT IS THE PROPERTY OF ALLISON PARK GROUP. THE INFORMATION CONTAINED HEREIN IS CONFIDENTIAL. IT IS NOT TRANSFERABLE. IT IS FURNISHED WITH THE CLEAR UNDERSTANDING THAT IT IS NOT TO BE TRACED, REPRODUCED OR USED IN ANY PROCESS OF MANUFACTURING WITHOUT WRITTEN PERMISSION FROM THE OWNER AND IS RETURNABLE UPON DEMAND. ANY INFRINGEMENT UPON THE PATENT RIGHTS SHOWN HEREIN, WHETHER IN PART OR WHOLE, WILL BE PROSECUTED.

AS PART OF OUR POLICY OF CONTINUING DEVELOPMENT, ALLISON PARK GROUP RESERVES THE RIGHT TO ALTER SPECIFICATIONS WITHOUT PRIOR NOTICE.

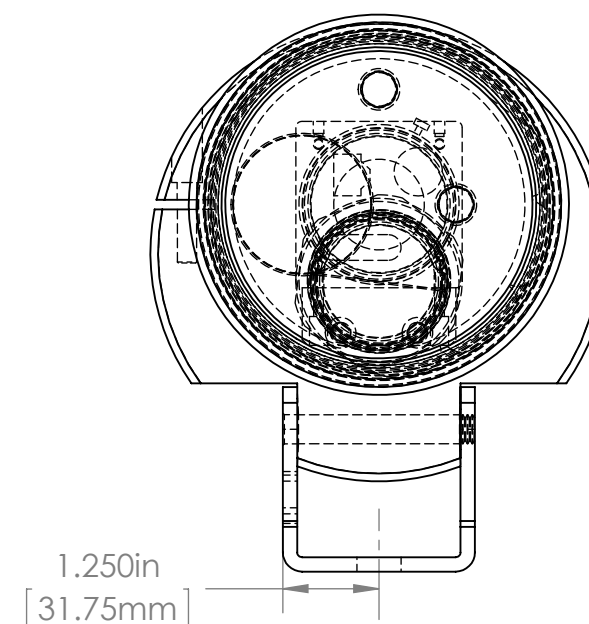
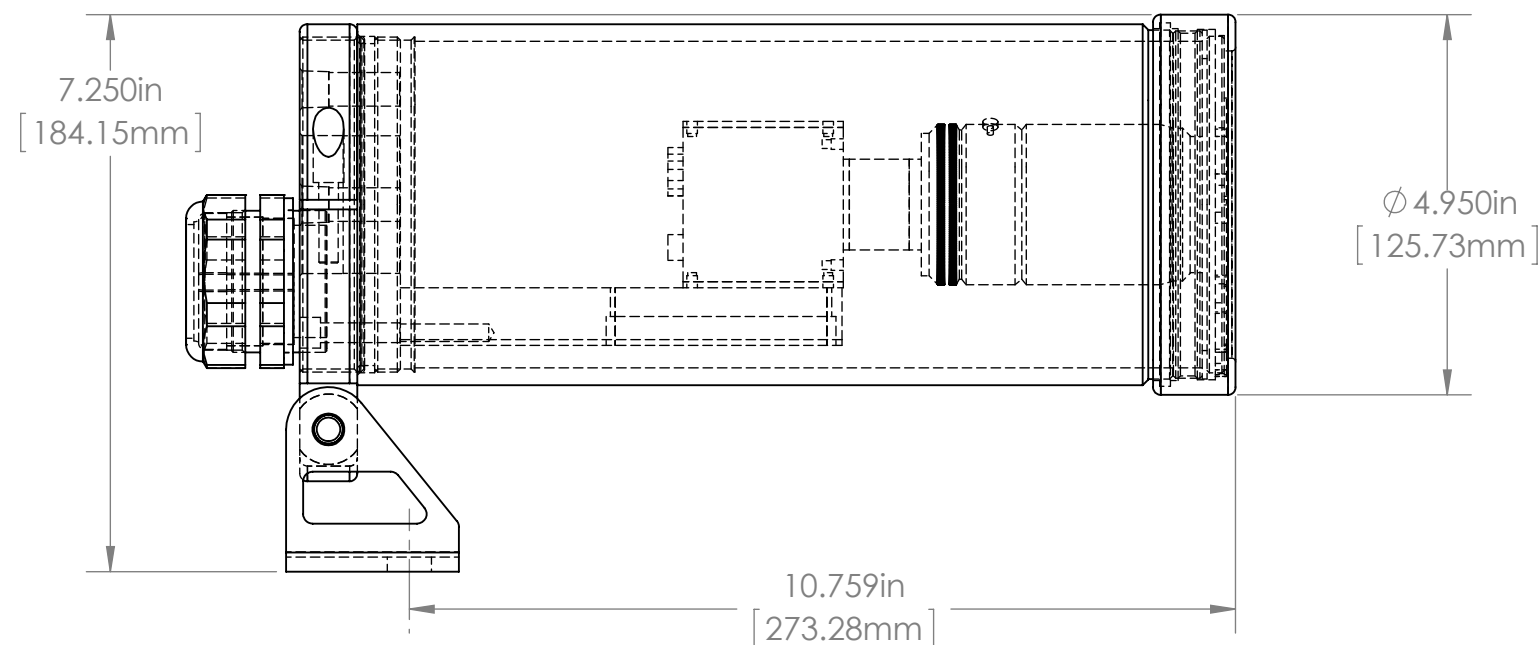
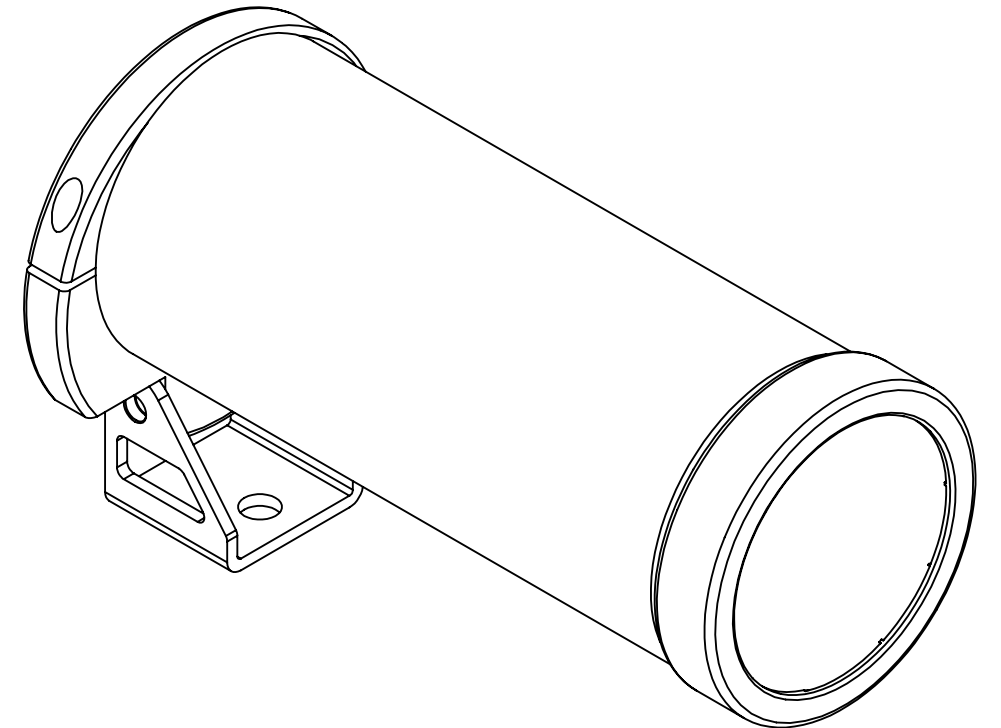
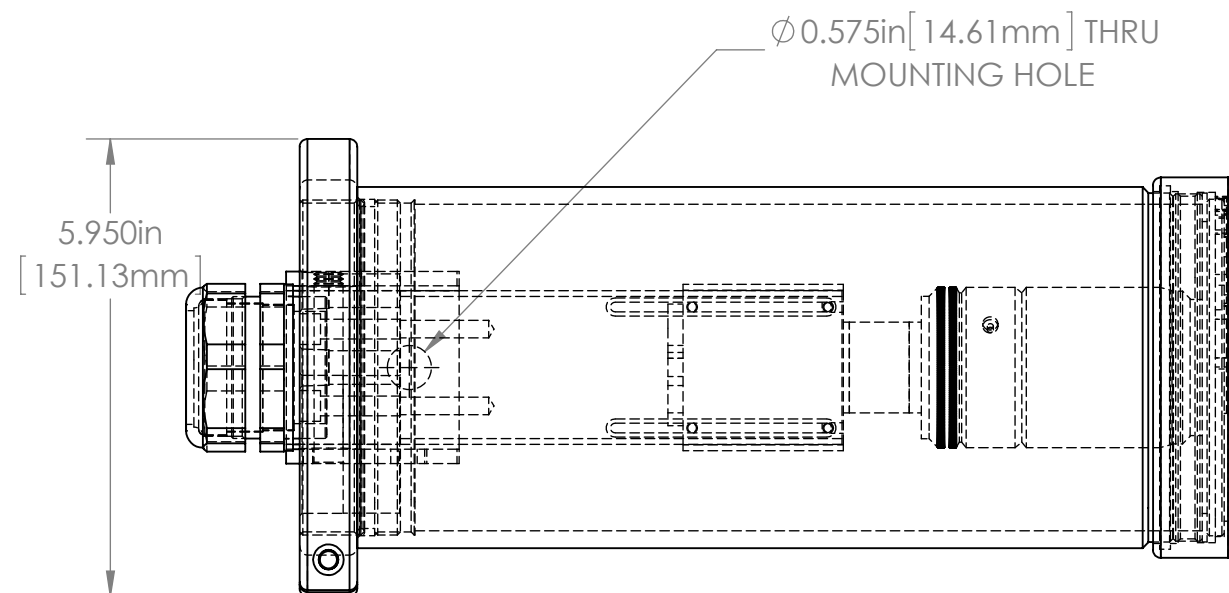
apg

Allison Park Group, Inc. (APG)
4055 Alpha Drive
Allison Park, PA 15101 USA
Phone +1 (412) 487-8211
Fax +1 (412) 486-3157

DESCRIPTION: 47C-AI (Keyence arm & CA-DRW5X ringlight bracket)			
MATERIAL:	6061 AL., GLASS WINDOW, STAINLESS FOOT	APPROX. WEIGHT	
FINISH:	CLEAR HARDCOAT ANODIZE		
DRAWN BY: OLSON	DATE: 3/26/2018	SCALE: NTS	SHT-SIZE: B
CHECKED BY:	DATE:	PART NUMBER:	REF. NUMBER:
APPROVED BY:	DATE:	47C-AI Sheet1 of 1	REVISION: A



				UNLESS OTHERWISE SPECIFIED: DIMENSIONS ARE IN INCHES SURFACE FINISH: TOLERANCES: .000= +/- 0.005" .00= +/- 0.010"		FINISH: CLEAR HARDCOAT ANODIZE		Allison Park Group, Inc. (APG) 4055 Alpha Drive Allison Park, PA 15101 USA		DO NOT SCALE DRAWING		REVISION		
				LINEAR:		DEBUR AND BREAK SHARP EDGES				This document is the property of APG and is considered company confidential. The information in this document is the property of APG and may not be used, reproduced, or distributed in whole or in part without the prior written permission of APG				
					NAME	SIGNATURE	DATE	Phone +1 (412) 487-8211 Fax +1 (412) 486-3157		TITLE: 47C-AT (HARD MOUNT ASSY)				
				DRAWN	SCHUBERT		3/29/2012							
				CHK'D				www.apgvision.com		DWG NO. 47C-AT ASSY				A3
				APPV'D										
				MFG										
				Q.A										
				NOTES:				MATERIAL: ALUMINUM 6061 T6		SCALE:1:5				
NO.	CHANGE	DATE	INIT.					WEIGHT:		SHEET 1 OF 1				



				UNLESS OTHERWISE SPECIFIED: DIMENSIONS ARE IN INCHES SURFACE FINISH: TOLERANCES: .000= +/- 0.005" .00= +/- 0.010"		FINISH: DEBUR AND BREAK SHARP EDGES		Allison Park Group, Inc. (APG) 4055 Alpha Drive Allison Park, PA 15101 USA		DO NOT SCALE DRAWING		REVISION	
				LINEAR:				Phone +1 (412) 487-8211 Fax +1 (412) 486-3157		This document is the property of APG and is considered company confidential. The information in this document is the property of APG and may not be used, reproduced, or distributed in whole or in part without the prior written permission of APG			
					NAME	SIGNATURE	DATE	www.apgvision.com		TITLE:			
				DRAWN	SCHUBERT		3/29/2012			47C-AV (JAI BM500GE)			
				CHK'D									
				APPV'D									
				MFG									
				Q.A									
				NOTES:						MATERIAL:		DWG NO.	
										47C-AV		A3	
NO.	CHANGE			DATE	INIT.			WEIGHT:		SCALE:1:5		SHEET 1 OF 1	

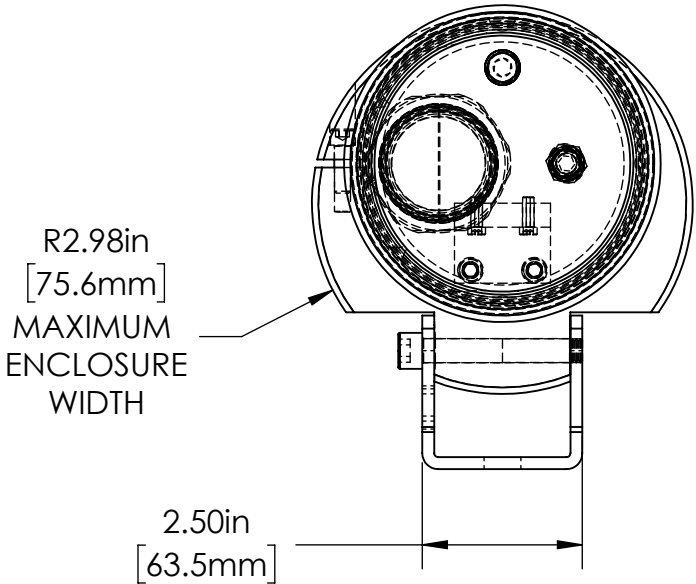
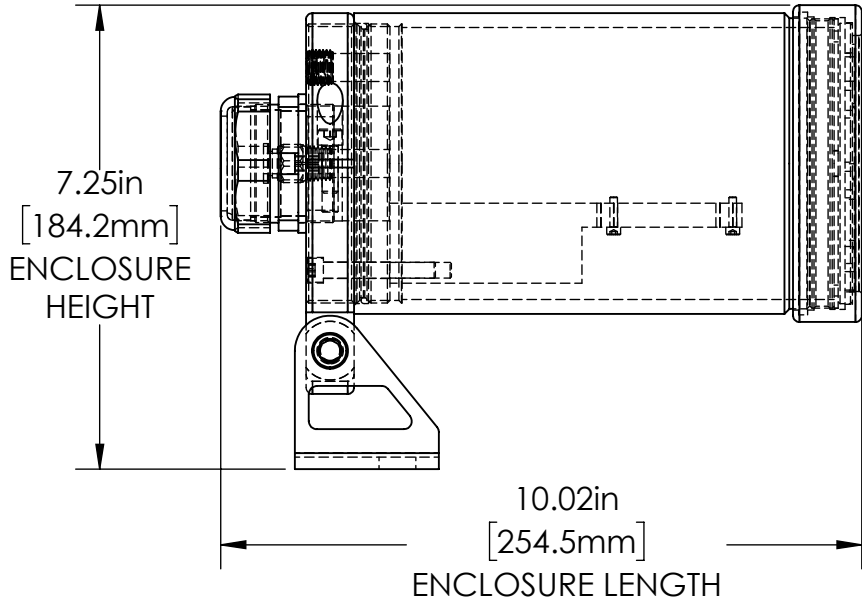
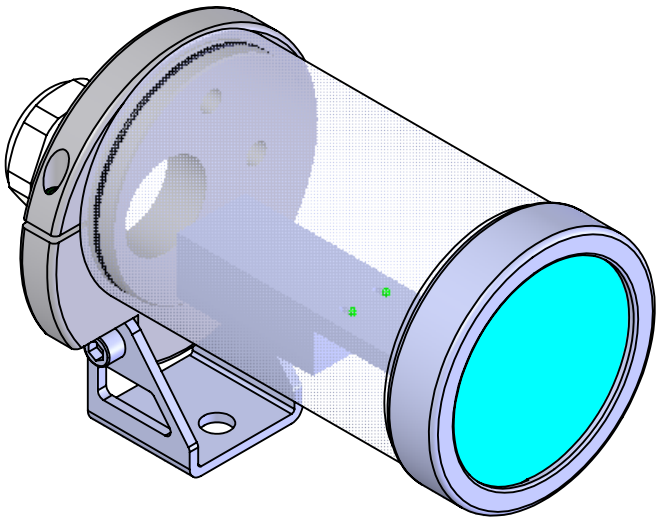
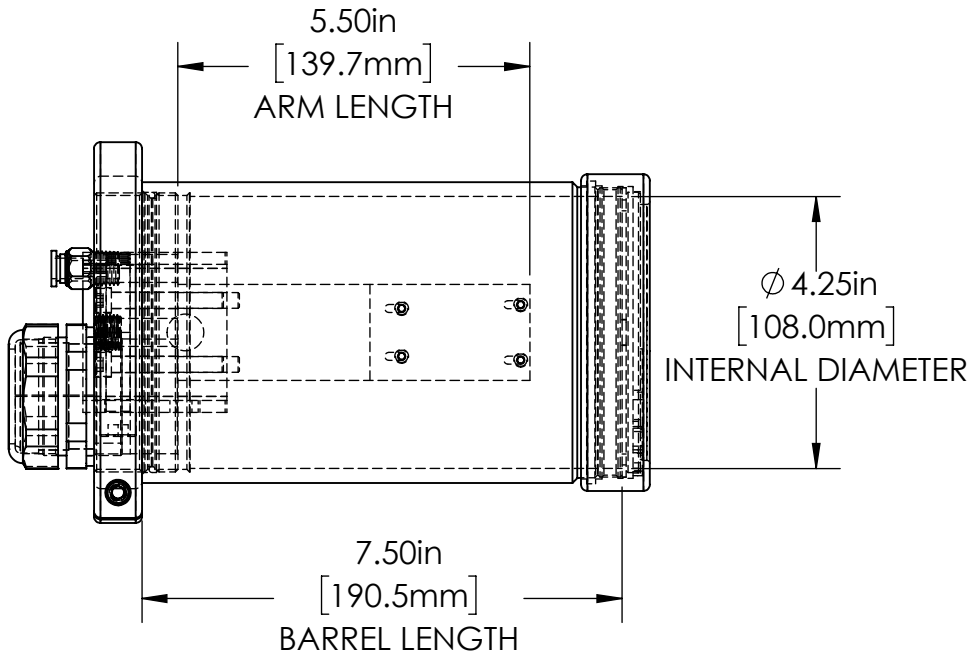
4

3

2

1


REVISIONS				
ZONE	REV.	DESCRIPTION	DATE	APPROVED
	A		7/30/2019	



TOLERANCES UNLESS OTHERWISE SPECIFIED			
MACHINING		SHEET METAL	
X.X	0.0250"	HOLE TO HOLE (SAME SURFACE)	
X.XX	0.0100"	X.X	0.030"
X.XXX	0.0050"	X.XX	0.010"
X.XXXX	0.0005"	X.XXX	0.005"
ANGULAR	0.5°	HOLE TO FOLDED EDGE	
DEBURR ALL		X.X	0.035"
		X.XX	0.025"
		X.XXX	0.015"
		FOLD TO FOLD	
		X.X	0.045"
		X.XX	0.035"
		X.XXX	0.020"
		ANGULAR 1.0°	

THIS PRINT IS THE PROPERTY OF ALLISON PARK GROUP. THE INFORMATION CONTAINED HEREIN IS CONFIDENTIAL. IT IS NOT TRANSFERABLE. IT IS FURNISHED WITH THE CLEAR UNDERSTANDING THAT IT IS NOT TO BE TRACED, REPRODUCED OR USED IN ANY PROCESS OF MANUFACTURING WITHOUT WRITTEN PERMISSION FROM THE OWNER AND IS RETURNABLE UPON DEMAND. ANY INFRINGEMENT UPON THE PATENT RIGHTS SHOWN HEREIN, WHETHER IN PART OR WHOLE, WILL BE PROSECUTED.

AS PART OF OUR POLICY OF CONTINUING DEVELOPMENT, ALLISON PARK GROUP RESERVES THE RIGHT TO ALTER SPECIFICATIONS WITHOUT PRIOR NOTICE.

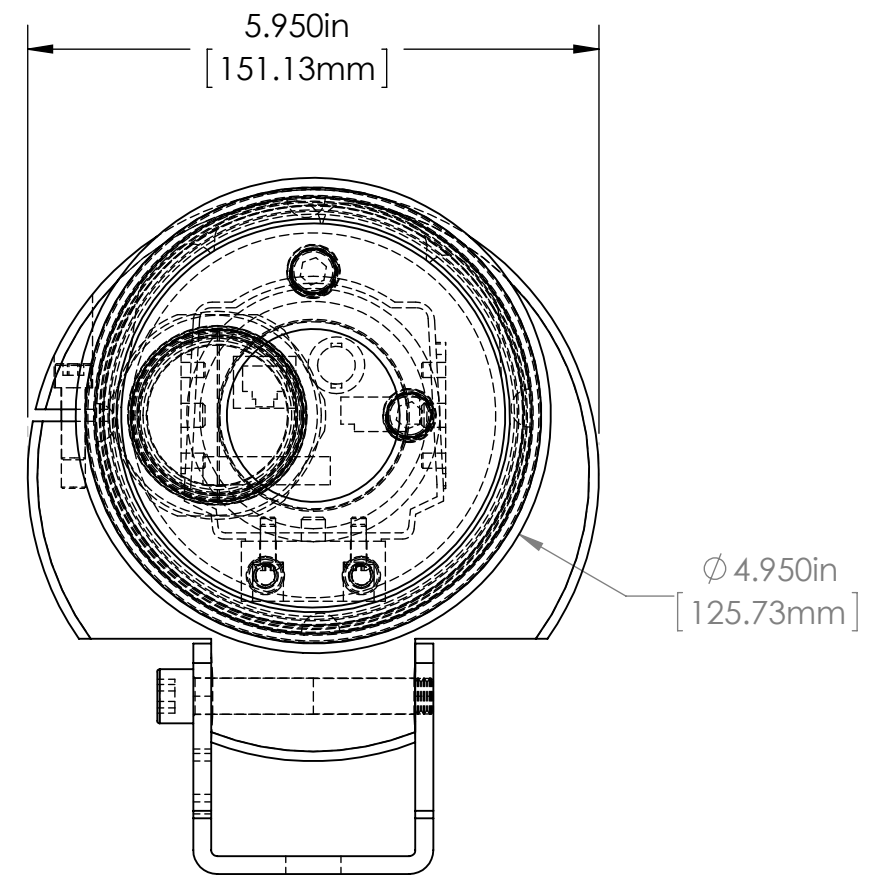
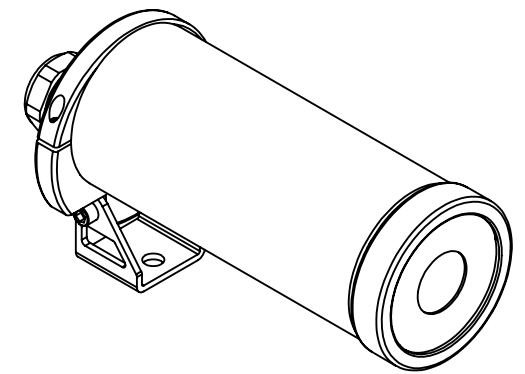
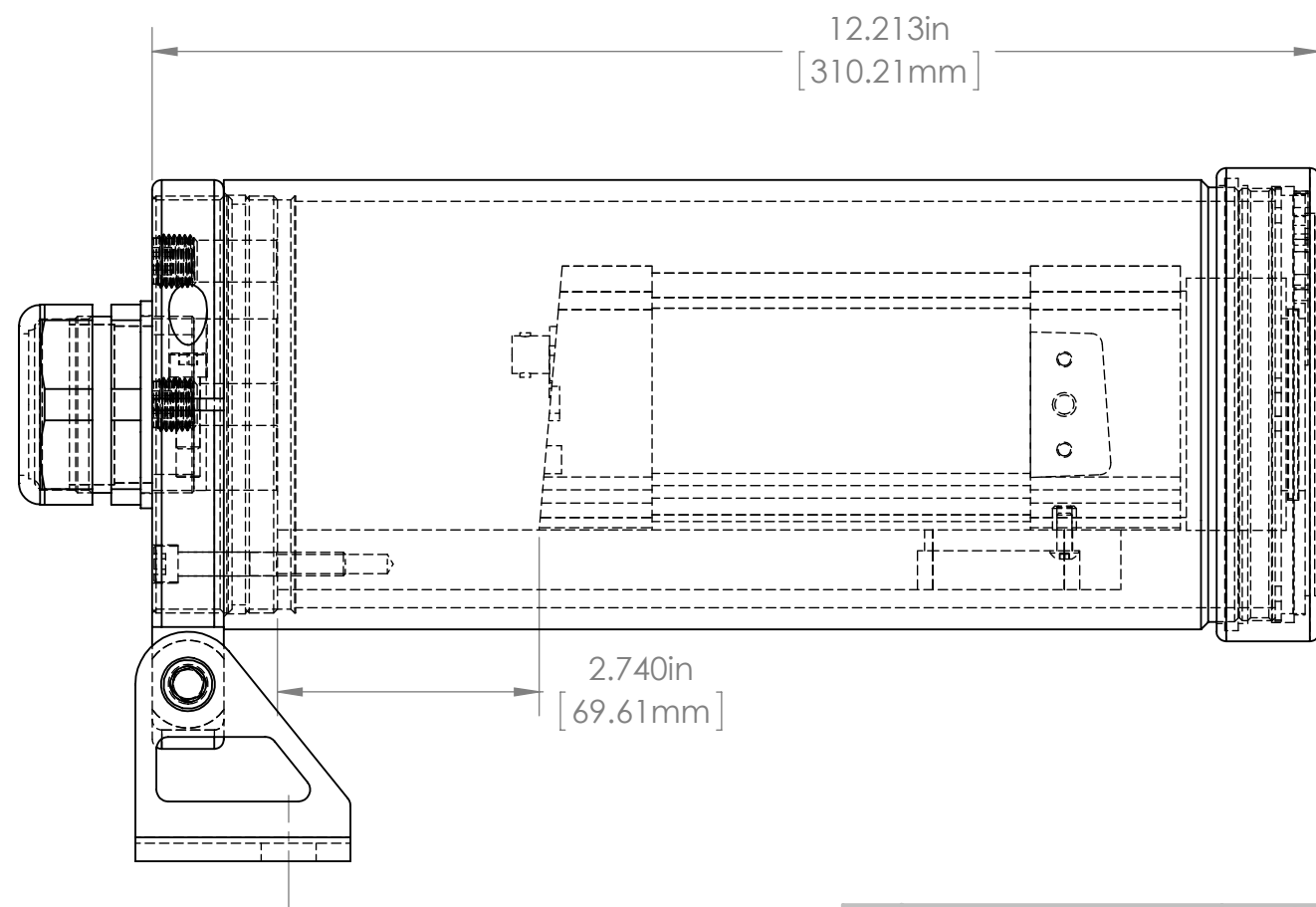
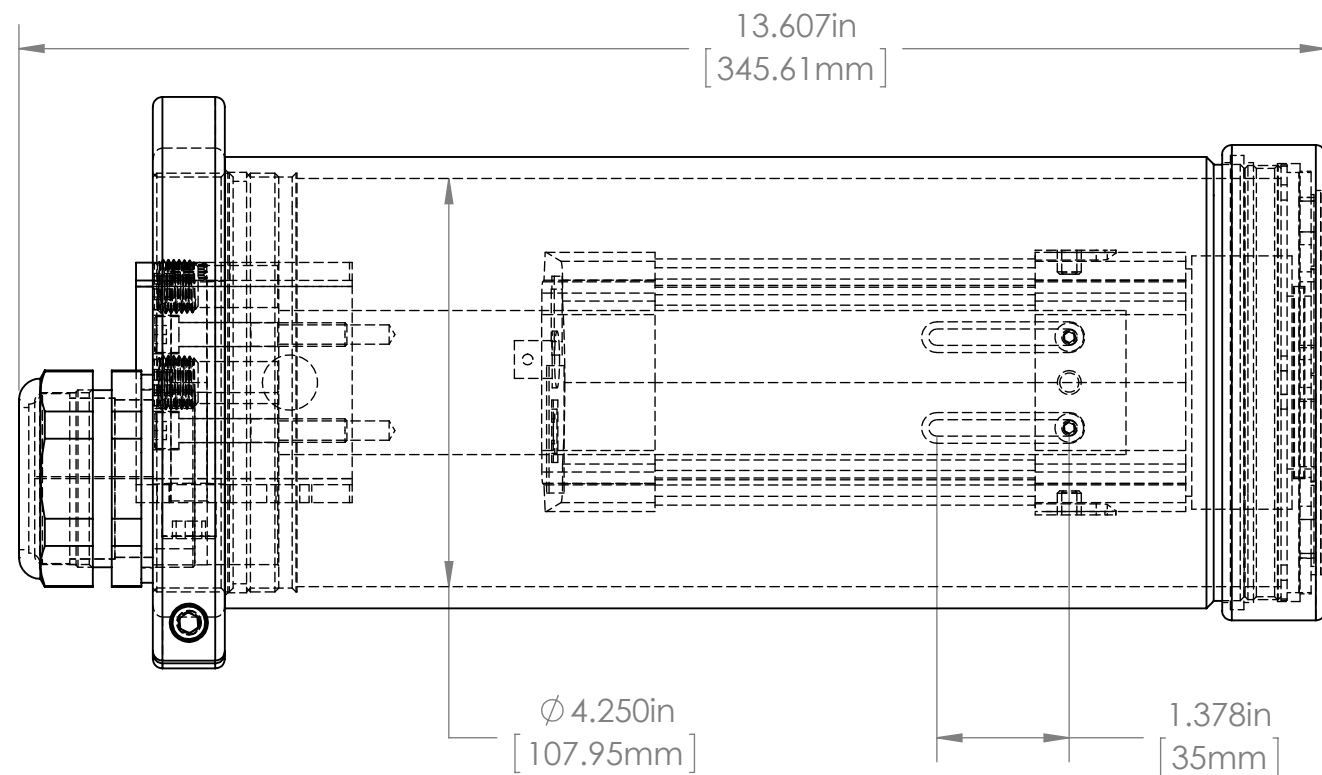
		Allison Park Group, Inc (APG) 4055 Alpha Drive Allison Park, PA 15101 USA Phone +1 (412) 487-8211 apgvision.com		
DESCRIPTION: 47C-BE ENCLOSURE FOR COGNEX MICRO				
MATERIAL: SEE BOM				
FINISH: SEE BOM				
DRAWN BY: KENNEDY	DATE: 8/12/2019	SCALE: 1:3	SHT-SIZE: B	APPROX. WEIGHT: 2.4929
CHECKED BY: .	DATE: .	PART NUMBER: 47C-BE		REVISION A
Sheet1 of 1				

4

3

2

1



				UNLESS OTHERWISE SPECIFIED: DIMENSIONS ARE IN INCHES SURFACE FINISH: TOLERANCES: .000= +/- 0.005" .00= +/- 0.010"		FINISH: CLEAR HARDCOAT ANODIZE		Allison Park Group, Inc. (APG) 4055 Alpha Drive Allison Park, PA 15101 USA		DO NOT SCALE DRAWING		REVISION			
				LINEAR:		DEBUR AND BREAK SHARP EDGES				This document is the property of APG and is considered company confidential. The information in this document is the property of APG and may not be used, reproduced, or distributed in whole or in part without the prior written permission of APG					
										47C-BH (FLIR A615)		TITLE:			
				DRAWN		NAME		SIGNATURE						DATE	
				CHK'D										3/29/2012	
				APPV'D											
				MFG											
						Q.A									
						NOTES:				MATERIAL:		DWG NO.			
										ALUMINUM 6061 T6		47C-BH ASSY DIMS			
										WEIGHT:		A3			
										SCALE:1:5		SHEET 1 OF 1			
NO.		CHANGE		DATE		INIT.									

4

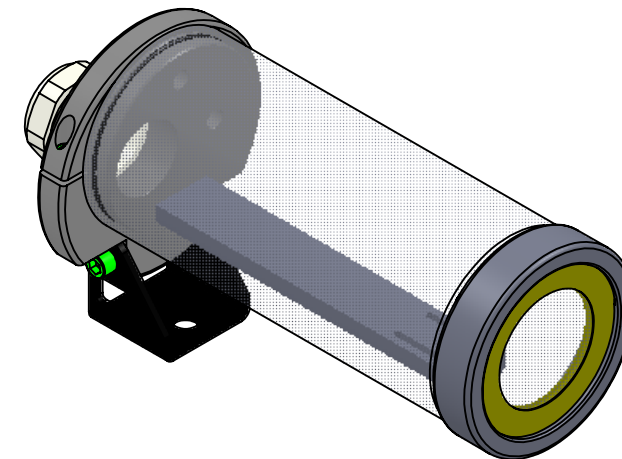
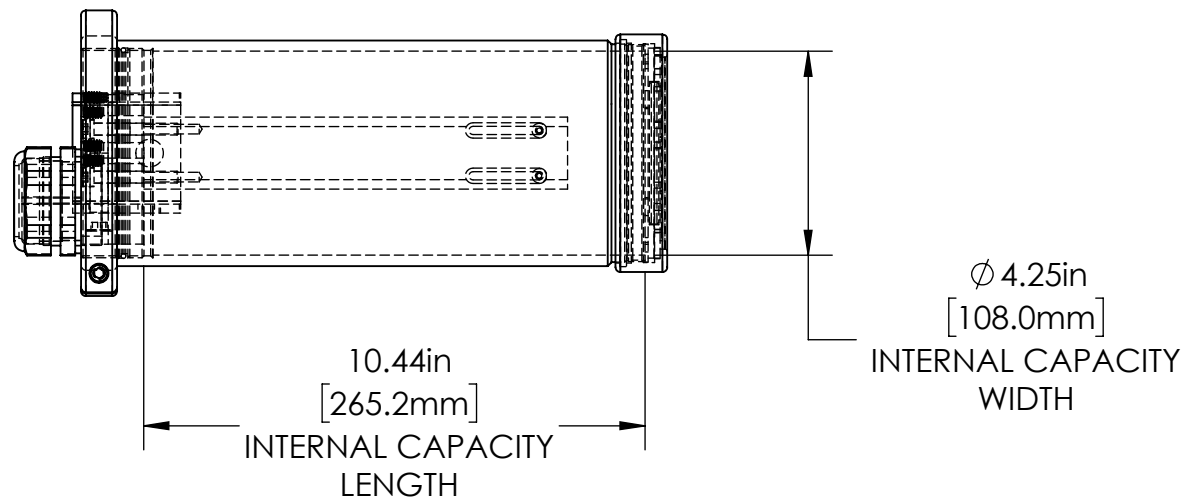
3

2

1

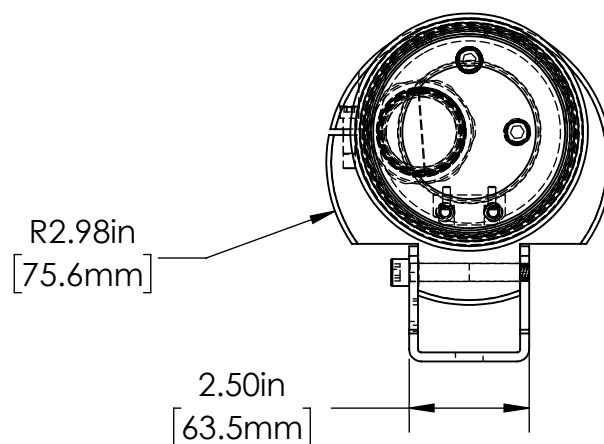
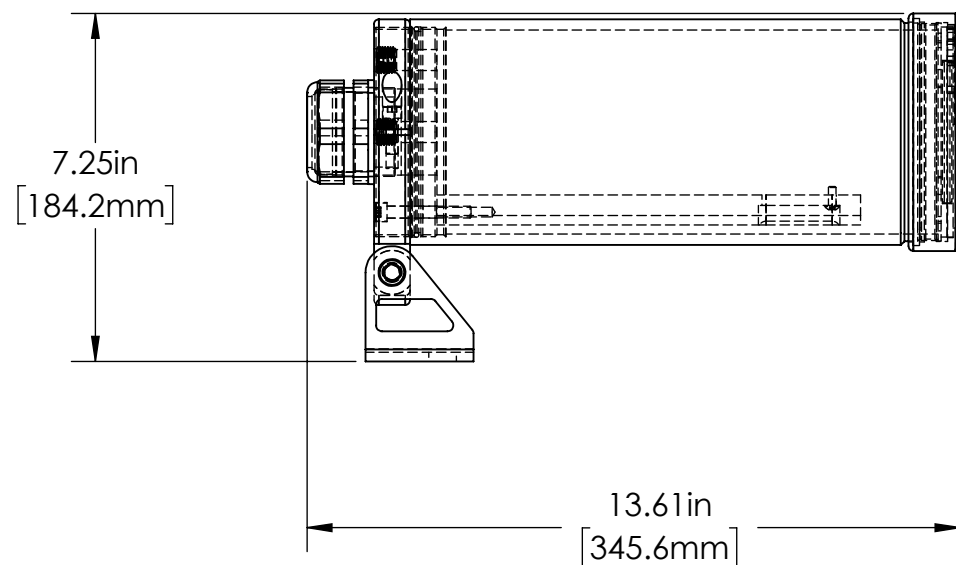
B

B



A

A



For more information please contact:

BOCK OPTRONICS INC.
14 Steinway Blvd., Unit 7
Toronto, Ontario M9W 6M6

Tel: (416) 674-2804
sales@bockoptronics.ca
www.bockoptronics.ca

REVISIONS

ZONE	REV.	DESCRIPTION	DATE	APPROVED
	A		7/30/2019	

TOLERANCES UNLESS OTHERWISE SPECIFIED			
MACHINING		SHEET METAL	
X.X	0.0250"	HOLE TO HOLE (SAME SURFACE)	
X.XX	0.0100"	X.X	0.030"
X.XXX	0.0050"	X.XX	0.010"
X.XXXX	0.0005"	X.XXX	0.005"
ANGULAR	0.5°	HOLE TO FOLDED EDGE	
DEBURR	ALL	X.X	0.035"
		X.XX	0.025"
		X.XXX	0.015"
		FOLD TO FOLD	
		X.X	0.045"
		X.XX	0.035"
		X.XXX	0.020"
		ANGULAR 1.0°	



THIS PRINT IS THE PROPERTY OF ALLISON PARK GROUP. THE INFORMATION CONTAINED HEREIN IS CONFIDENTIAL. IT IS NOT TRANSFERABLE. IT IS FURNISHED WITH THE CLEAR UNDERSTANDING THAT IT IS NOT TO BE TRACED, REPRODUCED OR USED IN ANY PROCESS OF MANUFACTURING WITHOUT WRITTEN PERMISSION FROM THE OWNER AND IS RETURNABLE UPON DEMAND. ANY INFRINGEMENT UPON THE PATENT RIGHTS SHOWN HEREIN, WHETHER IN PART OR WHOLE, WILL BE PROSECUTED.

AS PART OF OUR POLICY OF CONTINUING DEVELOPMENT, ALLISON PARK GROUP RESERVES THE RIGHT TO ALTER SPECIFICATIONS WITHOUT PRIOR NOTICE.



Allison Park Group, Inc (APG)
4055 Alpha Drive
Allison Park, PA 15101 USA
Phone +1 (412) 487-8211
apgvision.com

DESCRIPTION:
47C-BI ENCLOSURE FOR FLIR A315

MATERIAL: **SEE BOM**

FINISH: **SEE BOM**

DRAWN BY: KENNEDY	DATE: 8/7/2019	SCALE: 1:4	SHT-SIZE: B	APPROX. WEIGHT
CHECKED BY:	DATE:	PART NUMBER: 47C-BI	REVISION A	

Sheet1 of 1

4

3

2

1