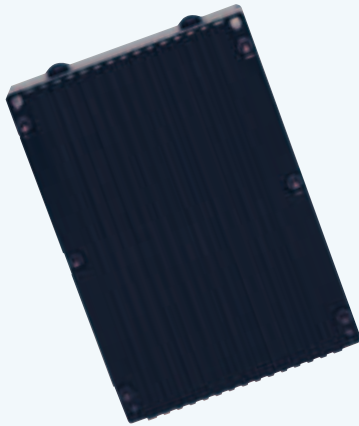


SOLO - OPTIONS

SOLO - Booster 1 Watt Amp

Compatible with SOLO video transmitters.



SOLO - Booster 5 Watt Amp

Compatible with SOLO video transmitters.



Specification:

Input	
RF In	SMA
RF Enable	Hirose
Power	4 Pin 0B Lemo
Output	
RF Out	TNC
RF	
Frequency Bands	2280 to 2550MHz, 2300 to 2450MHz, 1250 to 1400MHz (others on request)
Power In	100mW
Power Out	1W
Gain	10dB
Power Ripple	+/- 1dB across band
Output Matching	Matching Circuit immune to open or short
Physical	
Dimension	L 95mm, W 70mm, H 32mm
Weight	350g
Power	
DC input	9 to 16V Reverse Polarity Protected
Power Consumption	8W typical
Environment	
Temperature Range	-20 to +70 deg C

Products are available to security users only, in licensed frequency bands. These products are not approved for use by unlicensed users. Commercial products are available to unlicensed users - contact **domo** direct for details.

Product Code: SOLAMP-125140 SOLAMP-230245

Specification:

Input	
RF In	NType
Power	4 Pin Locking
Output	
RF Out	NType
RF	
Frequency Bands	2300 to 2500MHz or 1200 to 1400MHz (others on request)
Power In	100mW Lband, 10mW SBand
Power Out	5W
Gain	17dB Lband, 27dB SBand
Power Ripple	+/- 1dB across band
Output Matching	Matching Circuit immune to open or short
Physical	
Dimension	L 245mm, W 105mm, H 105mm
Weight	2000g
Power	
DC input	12V +/-2V Reverse Polarity Protected
Power Consumption	2.5A LBand, 7A SBand
Environment	
Temperature Range	-10 to +50 deg C

Products are available to security users only, in licensed frequency bands. These products are not approved for use by unlicensed users. Commercial products are available to unlicensed users - contact **domo** direct for details.

Product Code: AMP5W-120140 AMP5W-230250

SOLO - OPTIONS

SOLO - Transmission Torch Kit

The **domo** Torch Kit product is the ideal solution for first responders and military personnel entering hazardous environments.

The torch produces a strong beam of natural light (infra red option available), and is equipped with a colour auto focus camera in the centre of the beam (switches to B/W in low light). The camera views anything illuminated by the beam. The video image is then transmitted from the torch by an attached COFDM transmitter, and can be received on any of the **domo** tactical receivers such as MiniPIX or MicroVue.

This solution allows team controllers positioned outside of the immediate danger area to observe the progress of first responders as they enter hazardous environments such as collapsed buildings, chemical spills and fires.



Specification

Inputs	
Composite Video and Audio	Lemo
Battery Connection	Lemo
RS-232 Control and Data	Lemo
12V DC In	Lemo
Outputs	
RF out	SMA
Video	
Format	PAL/NTSC
Bitrate Narrow Band	1.2Mb/s to 4.8Mb/s
Horizontal Resolution	720, 528 or 480 pixels
Audio	
Audio Bitrate per channel	64kb/s to 364kb/s
Data	
RS-232 control port and TTL asynchronous data input (upto 115200 bps)	
RF	
Tuning Range Lband	1.15 to 1.4GHz
Tuning Range Low Sband	2.28 to 2.45GHz
Tuning Range High Sband	2.35 to 2.50GHz
Bandwidth Narrow Band	2.5MHz
Modulation	QPSK 1/3 (1.2Mb/s), QPSK 2/3 (2.4Mb/s), 16QAM 2/3 (4.8Mb/s)
Output Power Max	20dBm (100mW)
Power Control	30dB in 1dB steps
Control	
Front Panel	8 user selectable configurations
PC GUI	All features from easy to use GUI

Physical	
Dimensions	L 129mm, W 70mm, H 28mm
Weight	400g
Power	
DC input	9 to 16V
Power Consumption	6.3W to 7.5W configuration dependant (0.1W - sleep mode)
Environment	
Temperature Range	-10 to +50 deg C
Options	
AES scrambling software options	

Products are available to security users only, in licensed frequency bands. These products are not approved for use by unlicensed users. Commercial products are available to unlicensed users - contact **domo** direct for details.

Product Code: SOL4FL



domo

domo is at the forefront of innovation, developing technologies in the fields of digital wireless, video, audio, telemetry and IP.

Our key technology expertise is in digital video processing, digital modulation and Internet Protocol (IP) interfacing.

Our strength is in adapting complex technologies into simple-to-operate, robust solutions.

Our team of dedicated **domo** engineers is continually developing new solutions directed by demanding customer requirements in fields such as:

- Police Forces
- Security Services
- Special Forces
- Homeland Security Agencies
- First Responders
- Fire Services
- Port Security
- Traffic Management Agencies.