

The DCT represents the top of the line keyboard for performance and ergonomic design.

A back-lit graphic display with touch-screen helps the operator during all the control functions. It is possible to customize up to 30 user maps (graphic user interface), associating up to 40 keys (macro-command\*) for each map.

The image at start-up and service pages can be customized as well.

An easy PC graphic user interface allows you to design these maps and they can be simply uploaded on the keyboard through RS232 serial connection. The same connection allows the keyboard set-up and firmware update.

If the maps (graphic user interface) are not used, the touch-screen keyboard can be customized using the 35 macro-function keys.

For example, the remote control of the multiplexer SP16C by DCT is extremely easy because the same key symbols of mux functions can be reproduced on the touch-screen.

Furthermore the DCT is supplied with 4 languages menu with the possibility of upgrading it up to 12 languages with handling by the programmer.

The microprocessor controlled DCT allows you to interface and control SM42A-82A, SM84A-164A and SM328A matrix, and the multiplexer SP16C.

The operator can set up, through the video menu, the SM42A-82A, SM84A-164A and SM328A matrix.

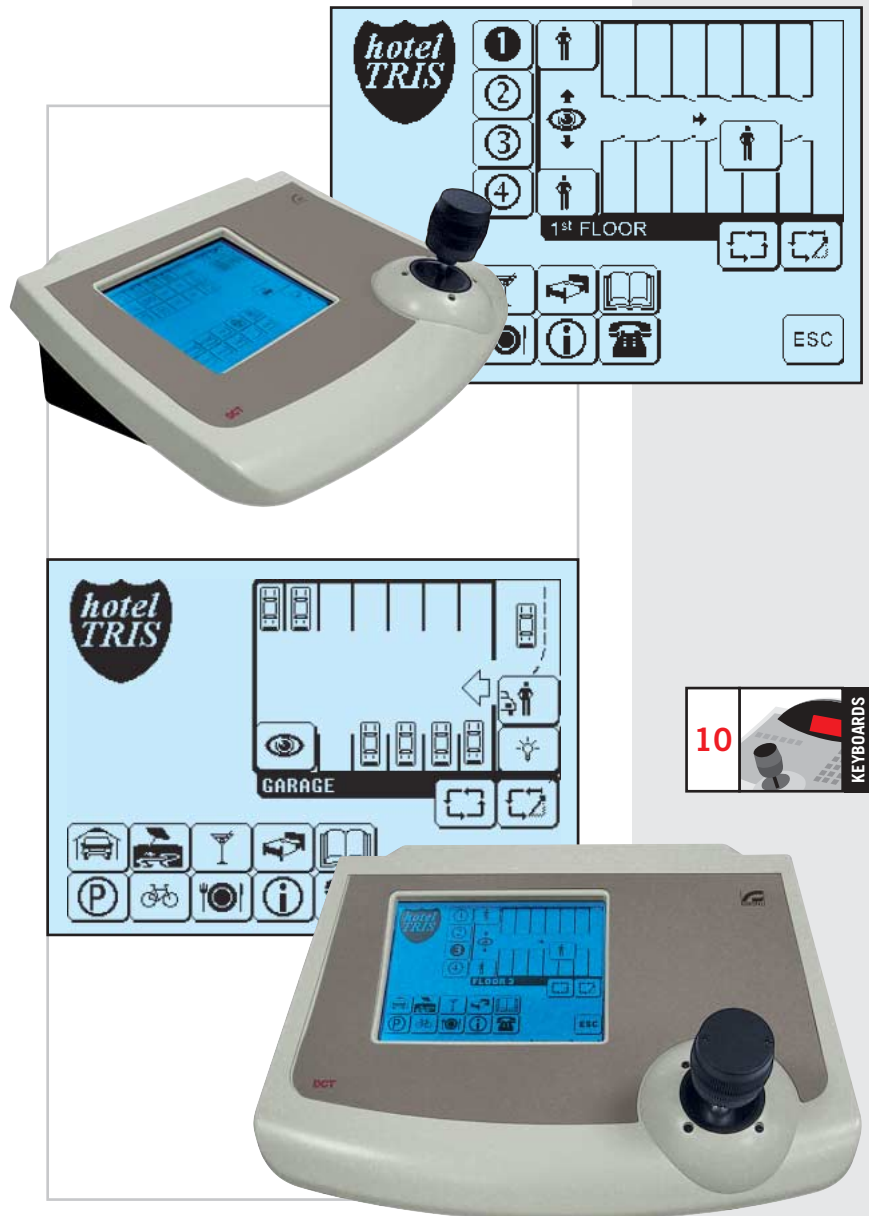
Furthermore, the touch-screen keyboard allows the control up to 10.000 telemetry receivers, the preset and patrol functions together the DTRX3 or DTRXDC receivers. The three axis joystick allows a simple manual control and gives the possibility of controlling variable speed Pan & Tilt, and to interface the most common high speed domes.

The management of every controlled device, from matrix to mux and DVR, from the telemetry receiver to speed domes, is far easier because only the existing device functions are enabled.

Three serial RS485 communication lines: one to the video matrix and multiplexer/Dvr, two for the management of two independent telemetry lines.

\*: more functions associated to the same key (for example: camera selection and scan command at the position 2)

- Microprocessor controlled
- Virtual keyboard with configurable graphic-screen display
- RS485 communication
- Ergonomic design
- Telemetry controlled by joystick



MODELS	
<b>DCT</b>	Matrix, mux and telemetry virtual touch screen control keyboard

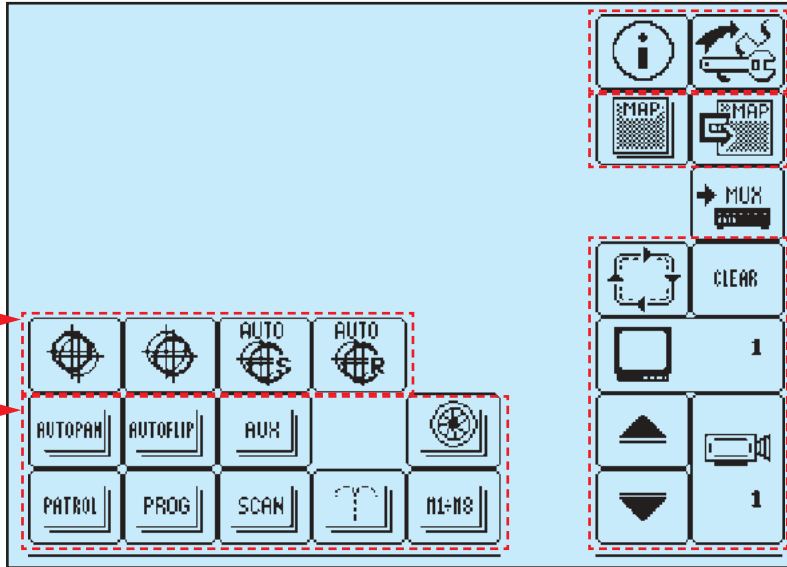
KEYBOARD SETUP

EXAMPLE: MAIN MENU

It represents only one of the possible system configurations

Direct control area

Control menu area



System data area

Graphic environment area

Video and telemetry controls area

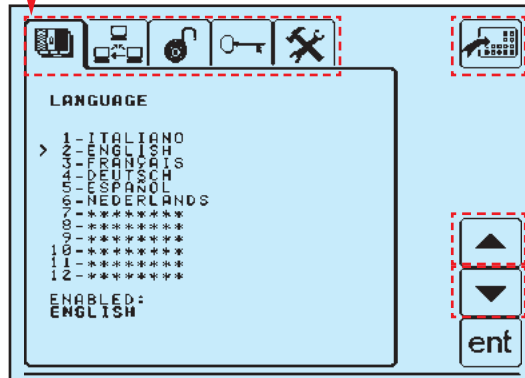
EXAMPLE: LANGUAGE MENU

Keys for entering the menus

Key for returning to the main menu

Key for moving the cursor position up

Key for moving the cursor position down

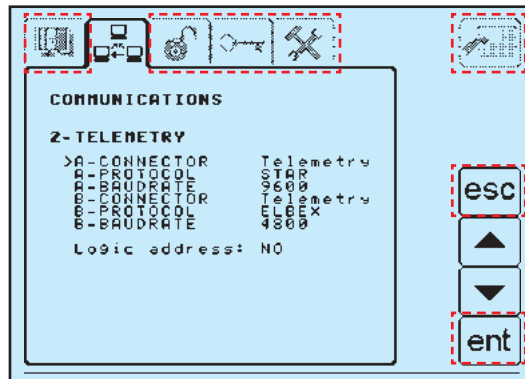


EXAMPLE: COMMUNICATION/TELEMETRY SUBMENU

Disabled keys

Key for exiting submenu

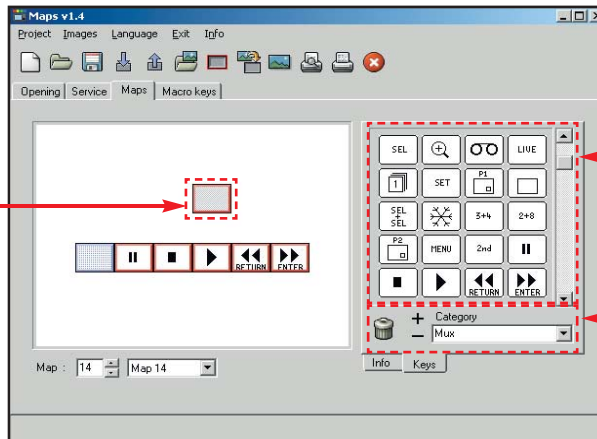
Confirm key



GRAPHIC USER INTERFACE SETUP FROM PC

The customization of the keyboard is extremely easy due to the PC software. The software allows you to import maps, images, icons libraries and to easily implement the keys. Management up to 30 Graphic User Interface.

Easy drag and drop icon import

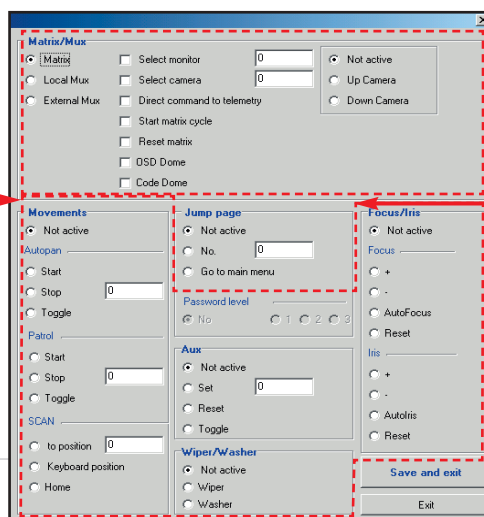


MUX icons library

Selection of libraries

At every key multiple functions can be assigned in order to control video and telemetry devices (even combined).

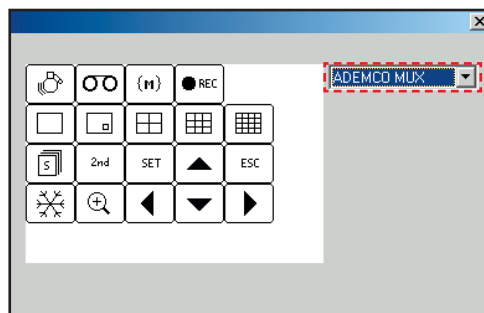
Serial telemetry lines command setup



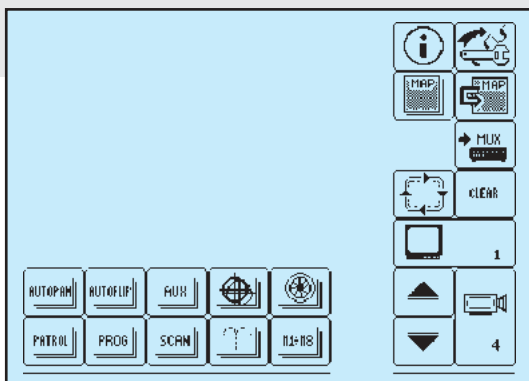
Video serial line commands setup

Skip pages

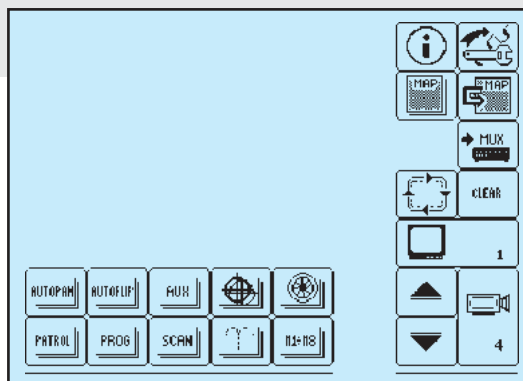
Specific keys for control of different MUX and DVR's allow you to easily select the required functions. Choosing the device, the available functions will be shown with the graphic format of the device itself.



Easy selection of the device and of the enabled functions



Example of screen layout for multiplexer and telemetry control



Example of screen layout for matrix and telemetry control

## TECHNICAL DATA

### GENERAL

- Joystick for Pan/Tilt/Zoom control
- Graphic display 320x240 pixel back-lit by white LED
- Ergonomic design
- Menu in 4 languages (italian, english, french and german) expandable to 12 (management by the programmer)
- Three password levels: connection, set-up, alarm reset
- Three passwords for the graphic environment management
- Customization up to 30 user maps and ability to set-up up to 40 keys (macro-command) for each map
- 35 functions keys (macro-command) freely configurable
- Up to 10000 cameras, 10.000 (lines A) + 10.000 (lines B) telemetry receivers, 100 monitors
- Alarm and/or breaks-ins communication buzzer
- Supplied with: instruction manual, wide range power supply, 3 power cables, 6 telephone cables, 6 shunt boxes RJ jack and applications for the management of the keyboard on PC

### MECHANICAL

- Thermo-resistant and shock proof ABS material
- Dimensions: 298x107x210 mm LxWxH (11.7x4.2x8.2 in)
- 3 axis proportional joystick
- Graphic display dimensions: 115x86 mm (4.5x3.4 in)
- 3 connettors RJ11
- Power supply jack connector
- DB9 connector
- Configuration Dip-Switch

### ELECTRICAL

- Keyboard power: 12VDC
- Power supply kit:  
IN: 100-240VAC, 47/63Hz, 15W - OUT: 12VDC, 1A

### COMMUNICATIONS

- Three RS485 lines for communication:
  - one direct line with video matrix and multiplexer/Dvr controllable to a maximum of 1200 m (3900ft);
  - two lines for two independent telemetry daisy chain up 10.000 telemetry receivers for line controllable to a maximum of 1200 m (3900 ft)
- Serial connection RS232 to PC for graphic layout creation, keyboard set-up and firmware update controllable to a maximum of 15 m (49 ft)

### RELATED PRODUCTS

#### Matrix:

Series SM (SM42A-82A, SM84A-164A, SM328A)

#### Multiplexer:

SP16C

#### Telemetry receivers:

DTRXDC, DTRX3, DTMRX2, MICRODEC485, on dedicated telemetry lines; DTRX3+DTCOAX and DTMRX2 control over coax through SM Matrix Series (SM42A-82A, SM84A-164A)

*Retrofit on discontinued products: contact Videotec for further specifications.*

### INTERFACE WITH OTHER PRODUCTS

- Direct control or control through matrix series SM of multiplexer Javelin colour or B/W
- Direct control of multiplexers: Ademco AXMD16EX, AXCD16E and AXCD16EX, Sanyo MPX-CD93P and MPX-CD163P, Sony YS-DX516P
- Direct control of DVR: Ademco DVR AHDR4, AHDR9 and AHDR16, Samsung SHR3090 and SHR3160, Sanyo DSR3000P, DSR3009P and DSR3016P, Sony HSR-X209P and HSR-X216P
- Direct speed dome and telemetry control: Elbex: EX/EXC 8000 (Instant Dome); Eneo: VPT-42/RS1; Ernitec: Saturn; Fastrax: Dome Hitron Fastrax II HID-2404SM11P; JVC: TK-C675E, TK-C675BE, TK-C675B and TK-C676; Panasonic: WV-CS600 and WV-CS850; Pelco: Pelco "D" Dome Spectra II 3.31; Samsung: SCC-641P and SCC643P; Santec: dome Santec VDC300ID; Sanyo: VCC9300P and VCC9400P; Sensomatic: Delta Dome II; VCL: VC5S-ORBM; Star: SMD
- Free device: the keyboard allows the control of multiplexers, DVR, PC or other devices through the implementation of the proprietary Macro Protocol. The graphic user interface and the control keys can be freely associated by the user/installer. The total number of commands is 128; in the main layout up to 30 command keys can be freely handled.

*Ademco, Elbex, Elmo, Eneo, Ernitec, JVC, Panasonic, Samsung, Sensomatic, Sanyo, Star, VCL, Javelin, Hitron and Sony are registered trademarks.*

*Because DCT may be interfaced with equipment not manufactured by Videotec, it is possible that the interface protocols have changed or are in a different configuration from earlier tested units from us. Because Videotec recommends a bench test prior to installation, Videotec will not be liable for any installation costs or lost revenues in the event a compatibility problem will occur.*

### ENVIRONMENT

- Indoor
- Operating temperature: 0-40°C (32-104°F)

### COMPLIANCE TO

- CE according to EN 61000-6-3, EN 60950, EN 55022 Class B, EN 50130-4
- FCC according to Part. 15 Class B

	<b>Unit Weight (kg / lb):</b> DCT: 1,7 / 3,7	<b>Package Weight (kg / lb):</b> DCT: 2,2 / 4,8	<b>Package Dimensions (cm / in):</b> DCT: 24x14,5x41 / 9,4x5,7x16	<b>Master Carton (units):</b> DCT:
--	---	--	--	---------------------------------------