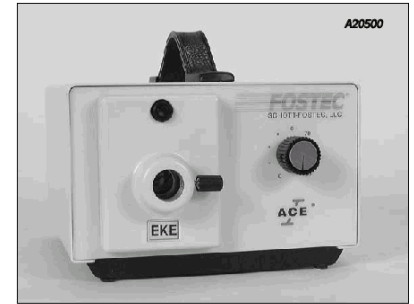


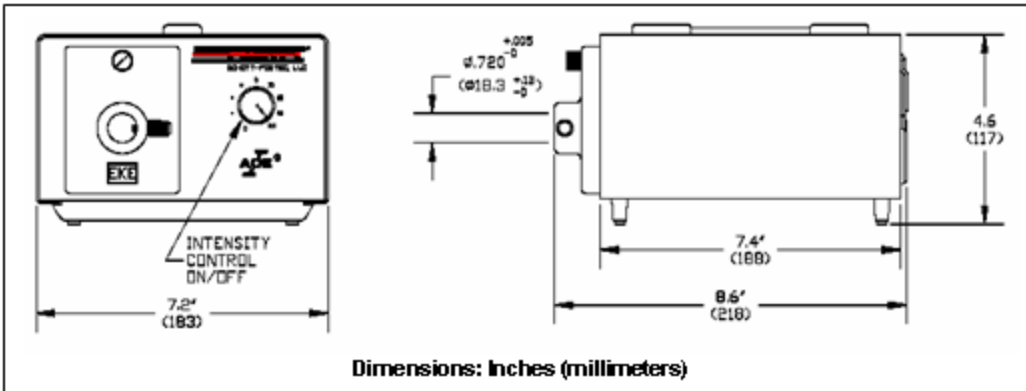
NERLITE® CS-1 FO Light Source, AC Coupled

NERLITE resells SCHOTT-FOSTEC Fiber Optic Light Sources. The **CS-1** provides a compact, rugged, AC halogen light source with solid state dimmer for variable light intensity and maximized lamp life.

NER Model #	Description	FOSTEC Model #
RVA:238001000	CS-1 FO Light Source, AC Coupled, EKE Lamp, 115V U.S.	A20500
RVA:238001001	CS-1 FO Light Source, AC Coupled, EKE Lamp, 230V EUR.	A20510



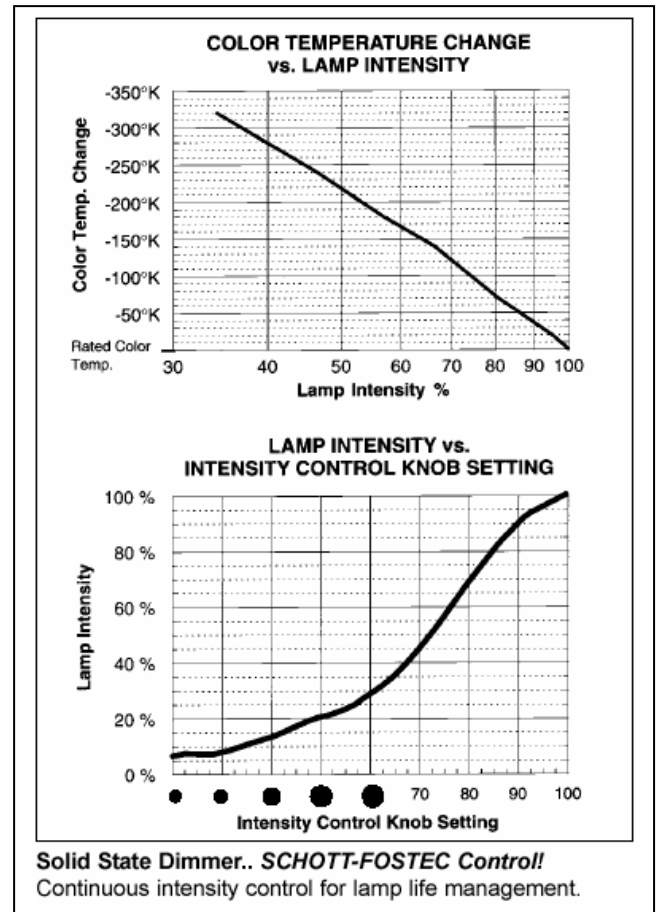
ACE® Light Source with EKE lamp, A20500



150 Watt Halogen Lamps		
Part No.	Type	Description
A08110	EJA	3350° K color temperature. 21 Volt. Most intense. Small spot size. Rated 40 hrs., 500 hrs. w/dimmer.*
A08120	EKE	3250° K color temperature. 21 Volt. High output for most applications. Rated 200 hrs., 2000 hrs. w/dimmer.*
A08130	DDL	3150° K color temperature. 20 Volt. Extremely uniform output. Rated 500 hrs., 5000 hrs. w/dimmer.*

* Voltage reduced to 80% of full intensity

Power Supply Specifications	
Power Consumption	190 Watts (nominal)
Output Voltage	0 - 21 VAC
Fiber Receptacle	.720 (13.3)
Input Voltage	115 VAC / 60 Hz
	230 VAC / 50/60 Hz
Temperature Range: Operating	0° to 50° C



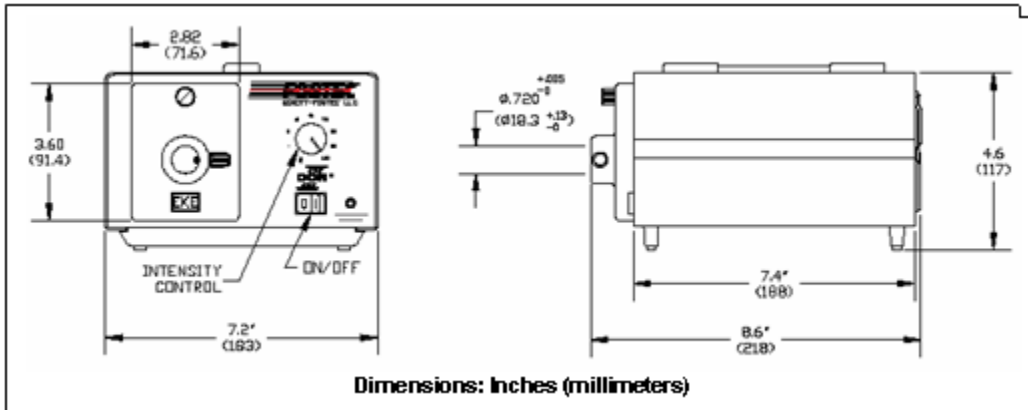
NERLITE® CS-2 FO Light Source, DC Coupled

NERLITE resells SCHOTT-FOSTEC Fiber Optic Light Sources. The **CS-2** provides a DC regulated light source of intense, cool illumination.

NER Model #	Description	FOSTEC Model #
RVA:238001100	CS-2 FO Light Source, DC Coupled, EKE Lamp, 115V U.S.	A20800
RVA:238001102	CS-2 FO Light Source, DC Coupled, EKE Lamp, 230V EUR.	A20810



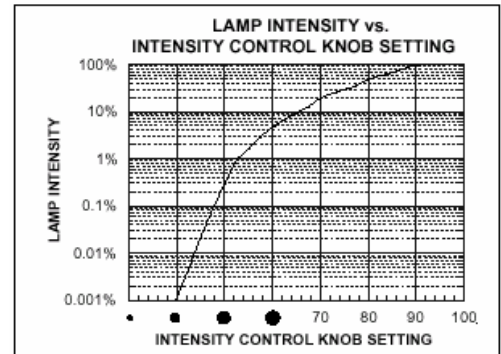
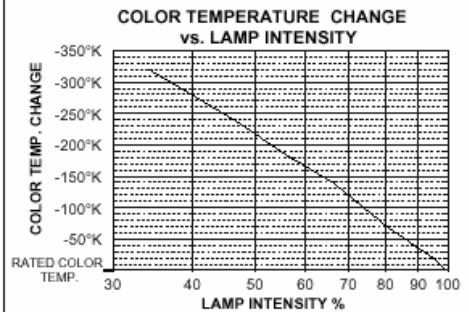
DCR® III Light Source with EKE lamp, A20800



150 Watt Halogen Lamps

Part No.	Type	Description
A08110	EJA	3350° K color temperature. 21 Volt. Most intense. Small spot size. Rated 40 hrs., 500 hrs. w/dimmer.*
A08120	EKE	3250° K color temperature. 21 Volt. High output for most applications. Rated 200 hrs., 2000 hrs. w/dimmer.*
A08130	DDL	3150° K color temperature. 20 Volt. Extremely uniform output. Rated 500 hrs., 5000 hrs. w/dimmer.*

* Voltage reduced to 80% of full intensity



NOTE:

If the intensity control knob is turned to the R (Remote) position, lamp intensity control is switched to the rear 9-pin connector. Front panel intensity control will always override the remote intensity control.

Power Supply Specifications

Rated Power Output	200 Watts
Output Voltage	0.0, 0.5 to 20.5 VDC
Input Voltage Rating, 50/60 Hz.	90 to 265 VAC
Power Factor Correction @ 230 VAC, 50 Hz.	> 0.99, < 4°
Hold-up Time, Nominal AC Input, Full Load	8.3 milliseconds
Line Regulation, Over Entire Input Range	±0.05%
Current Limit Set Point	8.5 Amps
Temperature Range: Operating	0° to 45°C
Storage	-25° to 85°C
Relative Humidity, Non-condensing	5% to 95%

Vibration Tests: 3 Orthogonal Axes, 0.75g peak, 5 to 500Hz at 1 oct/min. 2 hrs. each axis, 1.5g for 5 min. dwell at 3 major component resonances.

NERLITE® FO Light Guides (Bundles)

NERLITE resells SCHOTT-FOSTEC Fiber Optic Light Guides (Bundles). **LG-1 Single**, **LG-2 Dual**, and **LG-4 Quad** Guides all provide versatility in routing and positioning the light.

NERLITE Model #	Description	FOSTEC Model #
RVA:238000500	LG-1 Single Guide	A08031.40R
RVA:238000602	LG-2 Dual Guide	A21050
RVA:238000604	LG-4 Quad Guide	A21045

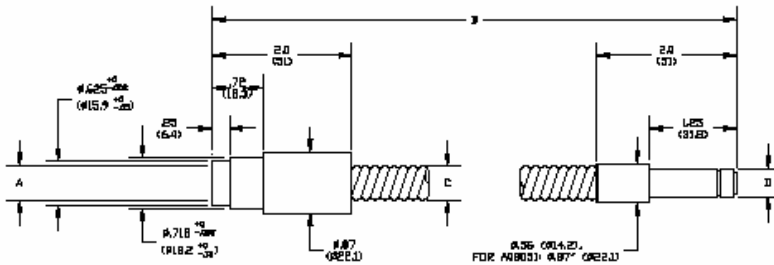


Quad Randomized and Calibrated Bundle

A08031.40R Single Randomized Bundles

Matrix for A08031.40R					
Part No.	A	B	C	Bend Radius	D
A08031.40R	.30" (78)	40" (1016)	.47" (12)	.6" (15)	.393" (10)

Dimensions in () are in mm



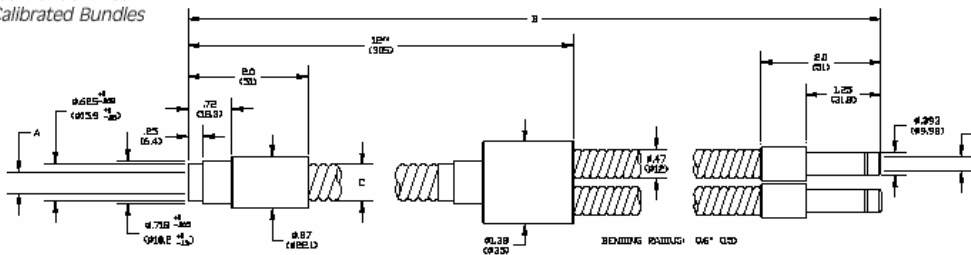
Randomized and Calibrated Bundles					
Part No.	Configuration	Active Input Fiber Diameter	Distal Ferrule Diameter	Tubing Diameter	Bundle Length
Randomized Bundles					
A08031.40R	Single	.30" (8)*	.393" (10)	.47" (12)	40" (1016)
Randomized and Calibrated Bundles - 12" (305) Common Bundle Length					
A21045	Quad	.51" (13)	.393" (10)	.83" (21)	48" (1219)
A21050	Dual	.43" (11)	.393" (10)	.67" (17)	48" (1219)

*Dimensions in () are in mm

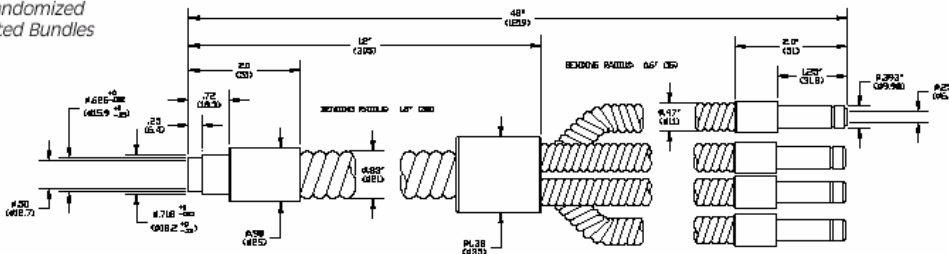
A21050 Dual Randomized & Calibrated Bundles

Matrix for A21050					
Part No.	A	B	C	Bend Radius	D
A21050	.43" (11)	48" (1219)	.67" (17)	1.2" (30)	.30" (7.6)

Dimensions in () are in mm



A21045 Quad Randomized & Calibrated Bundles



FEATURES

- * The fiber is randomized to improve spot uniformity.
 - * For specific uniformity requirements, calibrated outputs on dual and quad bundles were designed to be interchangeable for Machine Vision inspection applications. Interchangeability was achieved by maintaining light intensity within 10% bundle to bundle.
- We assure consistency by adding a 12" (305)* randomized common end at the input. This extra 12" (305) of fiber scrambles the light, distributing any hot or cold spots from the lamp throughout each of the legs. Then, each one of the legs is calibrated so the output from each leg is within 5% of each other.
- * Tight bending radius for easy routing.

WARNING:

This product is manufactured with glass fiber. Not for use in cable/hose carrier.
Call SCHOTT-FOSTEC to discuss moving cable/hose carrier applications.