

SENTECH

Sentech Digital Camera Link® Cameras

New
Product

STC-CL33A/STC-CLC33A Series
STC-CL83A/CLC83A Series



The STC-CL33A/CL83A (B/W) and STC -CLC33A/CLC83A (Color) cameras are full featured Camera Link® machine vision cameras. Their small size 28 x 28 x 40 allows them to fit into the tightest physical configuration. This series offers B/W and Color versions for both the VGA and XGA sensors.

STC-CL33A/CLC33A

STC-CL83A/CLC83A

VGA

XGA

30/60/90fps

15/30fps

Camera Link®



High Speed Triggering
Square Pixels

Available in Color or B/W

Compact Size (28 X 28 x 40mm)



Sentech Digital Camera Link® Cameras

STC-CL33A/STC-CLC33A Series

STC-CL83A/CLC83A Series

STC-CL33A/STC-CLC33A Specifications STC-CL83A/STC-CLC83A Specifications

	STC-CL33A/CLC33A	STC-CL83A/CLC83A
Image Sensor:	1/3" VGA CCD	1/3" XGA CCD
Signal Format:	Progressive	Progressive
Effective Picture Element:	659 (H) x 494 (V)	1034 (H) x 779 (V)
Active Picture Element:	648 (H) x 494 (V)	1024 (H) x 768 (V)
Chip Size:	5.79 (H) x 4.89 (V) mm	5.80 (H) x 4.92 (V) mm
Cell Size:	7.4 (H) x 7.4 (V) μ m	4.65 (H) x 4.65 (V) μ m
Horizontal Drive Freq.:	36.8181MHz	29.5MHz
Horizontal Frequency:	47.2028KHz	23.235KHz
Vertical Frequency:	94.784Hz	29.2Hz
Minimum Illumination:	1 lux @ F1.2	1 lux @ F1.2
Lens Mount:	C-Mount	C-Mount
Sync System:	Internal and External (HD/VD) Automatically	
Scanning Method:	Progressive Scan/Partial Scan (1/2, 1/4)/Bining	
Gamma:	1.0	1.0
Gain:	Adjustable Fixed Gain	
Electronic Shutter:	1/30 ~ 1/100,000 Second (Variable 1H Step)	1/30 ~ 1/100,000 Second (Variable 1H Step)
Trigger Shutter:	Pulse Variable Integration Shutter Trigger (~1/100,000s) Edge Preset Trigger (Variable 1H Step)	
Video Output:	Digital: 10 bit Camera Link®	
Power Supply:	12V DC	
Power Consumption:	200 mA	
Operation Temperature:	-10°C ~ 45°C (23°F ~ 113°F)	
Dimensions:	28 (W) x 28 (H) x 40 (D) mm (1.12" x 1.12" x 1.6")	
Weight:	45g (1.58 oz.)	

SENTECH

Sentech Digital Camera Link® Cameras



STC-CL1500/CLC1500



The STC-CL1500/STC-CLC1500 is a ½" SVGA 1360(H) x 1024(V) Camera Link® camera available in B/W or Color output. The camera outputs both standard speed of 7.5 fps or double speed of 15 fps. These cameras allow full triggering over the Camera Link® connection.

Features:

- High resolution (SVGA), High performance CCD with approximately 1.4 mega pixel.
- Square Pixel Array
- Both Digital (10 bit Camera Link®) and analog simultaneous outputs.
- Double Speed (15 frames/second) and standard speed (7.5 frames/second).
- Three scanning modes: Normal, Partial and draft.
- HD/VD external sync. and internal sync.
- Both pulse width and edge pre-select trigger modes.

SENTECH

Sentech Digital Camera Link® Cameras



- Available in both Monochrome and Color



STC-CL1500/CLC1500 Specifications

Imaging Device:	1/2" Monochrome CCD or available with RGB Primary Color Filter
Total No. of Pixels:	1392 (H) x 1024 (V)
Effective No. of Pixels:	1360 (H) x 1024 (V)
Chip Size:	7.60 (H) x 6.20 (V) mm
Cell Size:	4.65 (H) x 4.65 (V) μm (square pixels)
Scanning Size:	6.47 (H) x 4.84 (V) mm
Horizontal Drive Freq.:	14.318 MHz (Normal Speed) 28.636 MHz (Double Speed)
Horizontal Frequency:	7.999 KHz (Normal Speed) 15.997 KHz (Double Speed)
Vertical Frequency:	7.49 Hz (Normal Speed) 14.98 (Double Speed)
Lens Mount:	C-Mount
Sync Method:	Internal and External Switchable, Auto Switching
External Sync Signal:	HD/VD 3-5Vp-p, 75 Ω termination with (On/Off switch)
Internal Sync Signal:	HD/VD outputs 2-5Vp-p, 75 Ω termination (with On/Off switch)
Scanning Method:	Progressive Scan
Video Output:	Analog: 1 Vp-p at 75 Ω termination. Digital: 10 bit Camera Link® (Base Configuration)
S/N Ratio:	>50dB (Gain minimum)
Gamma Correction:	1
Shutter Trigger:	Pulse width trigger (3-1/10,000 second) and edge pre-select trigger (10 steps)
Electronic Shutter:	Normal Speed: 1/7.5 to 1/5000. Double Speed: 1/15 to 1/10000.
Gain:	Manual Gain, Fixed Gain, AGC
Minimum Illumination:	.3 lux with F1.2 at max. gain
Power Voltage:	12V DC Power
Power Consumption:	320 mA
Dimensions:	44 (W) x 29 (H) x 90 (D) mm (1.76" x 1.16" x 3.6")

SENTECH

==== Sentech Digital Camera Link® Cameras =====

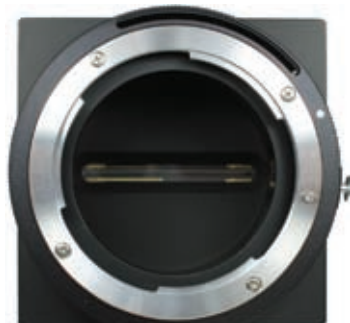
Digital Camera Link® Line Scan Camera STL-7400RCL



The new STL-7400RCL is a very compact, low cost, accurate, high speed 7.4K line scan camera which features Camera Link® digital output.

Features

- High resolution of 7400 pixels
- 100 MHz high speed video rate line sensor
- Digital Camera Link® output (medium configuration 8 x 10 bit)
- Small size, light weight
- Nikon F lens mount



SENTECH

===== Sentech Digital Camera Link® Cameras =====

Digital Camera Link® Line Scan Camera STL-7400RCL



Camera Link®
Cameras

STL-7400RCL Basic Specifications

Number of Pixels:	7,400
Pixel Pitch:	4.7µm x 4.7µm
CCD Effective Element Size:	34.8mm
Video Rate:	100MHz (MAX)
Scanning Rate (Scan/Sec.):	12.7KHz
Line Transfer Pulse Input:	79µsec (MIN) 100Ω terminated
Digital Video Output:	Medium Config. 4 x 8 bit
Sensitivity (V/Lux sec):	50
Saturation Exposure (Lux Sec):	0.13 (On an Element)
Dynamic Range:	2,000 (Standard, On an Element)
Output Uniformity:	Standard 3% at 50% Saturation (On an element)
Power Capacity:	+12V +/- 0.5V (600mA)
Weight:	360g (12.7 oz.)
Dimensions:	64 (W) x 64 (H) x 80.3 (D) mm (2.56" x 2.56" x 3.21")
Lens Mount:	Standard: Nikon F-Mount Option: Asahi K-Mount