

Sentech America  
1345 Valwood Parkway  
Suite 320  
Carrollton, TX 75006  
USA

Toll Free:  
(877) 736-8324  
Telephone:  
(972) 481-9223  
Fax:  
(972) 481-9209



LEN-B3.6

### Accessories

#### Cables

CAB-3BNC  
CAB-6BNC  
CAB-6Y/C  
12W-3.6PS

#### Power Supplies

45-601  
45-752A

#### Lenses (For 1/3" & 1/4" CCD)

Model No.	Focal Length
LEN-B2.5	2.5mm
LEN-B3.6	3.6mm
LEN-B6	6mm
LEN-B8	8mm
LEN-B16	16mm

#### Lens Mount

C-Mount Adapter

#### Programming Jig

Jig-ColorUSB

## STC-E631/C631

### Analog B/W Board Cameras



Programmable  
B/W DSP

1" x 1"  
Single Board

STC-E631 (EIA, 570 TVL)  
STC-C631 (CCIR, 570 TVL)

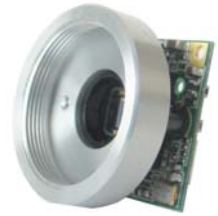
The STC-E631 (EIA) and the STC-C631 (CCIR) cameras are small inexpensive monochrome cameras especially designed for rugged environments. The cameras are extremely small at 1" x 1".

### FEATURES

- 1/3" CCD MONOCHROME
- DESIGNED FOR RUGGED ENVIRONMENT
- 570 TV LINES
- EIA OR CCIR FORMATS
- PROGRAMMABLE DSP
- FIELD INTEGRATION
- CS AND C MOUNT (w/ADAPTER) OR MICRO LENS MOUNT
- SIZE: 26 (H) x 26 (W) mm (1" x 1")

# ANALOG MONOCHROME BOARD

## EIA & CCIR



Models	STC-E631	STC-C631
Image Sensor:	1/3" IT CCD Monochrome	
Horizontal Resolution:	570 TV Lines	
Signal Format:	EIA	CCIR
Scanning Method:	2:1 Interlace	
Integration Mode:	Field	
Frame Rate:	30 fps	
Effective Picture Element:	768 (H) x 494 (V)	752 (H) x 582 (V)
Chip Size (mm):	5.59 (H) x 4.68 (V)	
Cell Size (µm):	6.35 (H) x 7.40 (V)	6.50 (H) x 6.25 (V)
Horizontal Frequency:	15.734kHz	15.625kHz
Vertical Frequency:	59.94Hz	50.00Hz
Gain:	AGC / Fixed (Software Selectable)	
S/N Ratio:	>56dB (Gain 0dB)	
Gamma:	0.45 / 1.0 (Software Selectable)	
Sync System:	Internal	
Communication:	Programmable DSP via I <sup>2</sup> C	
Minimum Illumination:	0.19 Lux @ F1.2, AGC On, 20IRE 0.6 Lux @ F1.2, AGC On, 50IRE	0.19 Lux @ F1.2, AGC On, 20IRE 0.56 Lux @ F1.2, AGC On, 50IRE
Electronic Shutter:	- Standard 1/60 (1/50), 1/100 (1/120), 1/250, 1/500, 1/1,000, 1/2,000, 1/5,000, 1/10,000, 1/20,000, 1/50,000, 1/100,000 - Extended 1/7.5, 1/15, 1/30 1/6.25, 1/12.5, 1/25	
Electronic Iris:	1/60 ~ 1/100,000	1/50 ~ 1/100,000
Mirror Image:	Normal / Mirror (Software or Hardware Selectable)	
Aperture (Sharpness):	On/Off (User Selectable) / Programmable	
Video Output:	1.0Vp-p, 75Ω	
Lens Mount:	CS Mount, C Mount (w/ adapter), Micro Lens Mount	
Optical Filter:	No IR Filter	
Power Supply:	+ 7V ~ +13V DC	
Power Consumption:	1.0W, 83mA at 12V	
Operating Temperature:	-10° ~ 45° C (14° F ~ 113° F) -30° ~ 65° C (-22° F ~ 149° F)	
Dimensions:	26 (W) x 26 (H) x Var. (D) mm (1" x 1" x Var.)	
Weight:	12g (0.42 oz.) (w/o lens)	



Sentech America  
1345 Valwood Parkway  
Suite 320  
Carrollton, TX 75006  
USA

Toll Free:  
(877) 736-8324  
Telephone:  
(972) 481-9223  
Fax:  
(972) 481-9209

## STC-130/135 Series

Analog B/W Board Cameras



STC-130 (EIA, 570 TVL)  
STC-135 (CCIR, 570 TVL)



LEN-B16

### Accessories

#### Cables

CAB-3BNC  
CAB-6BNC

#### Power Supplies

45-601  
45-752A

#### Lenses (For 1/3" & 1/4" CCD)

Model No.	Focal Length
LEN-B2.5	2.5mm
LEN-B3.6	3.6mm
LEN-B6	6mm
LEN-B8	8mm
LEN-B16	16mm

#### Lens Mount

C-Mount Adapter

The STC-130 series is an inexpensive, compact camera that can adapt to almost any standard resolution industrial application. This 1/3" monochrome camera series comes in board and cased versions. Excellent for low light applications.

## FEATURES

- 1/3" CCD MONOCHROME  
STC-130 (EIA) 510 (H) x 492 (V)  
STC-135 (CCIR) 500(H) x 582 (V)
- 380 TV LINES HORIZONTAL RESOLUTION
- AGC: ON (0-20dB)
- FIELD INTEGRATION
- CS MOUNT, C MOUNT (W/ADAPTER) OR MICRO LENS
- SIZE: 35 (W) x 35 (H) x VAR. (D) mm

# ANALOG MONOCHROME BOARD

LOW LIGHT EIA & CCIR



(with a 2.5mm Lens)

Models	STC-130	STC-135
Image Sensor:	1/3" IT CCD Monochrome	
Horizontal Resolution:	380 TV Lines	
Signal Format:	EIA	CCIR
Scanning System:	2.1 Interlace	
Integration Mode:	Field	
Frame Rate:	30 fps	
Effective Picture Element:	510 (H) x 492 (V)	500 (H) x 582 (V)
Horizontal Frequency:	15.734kHz	15.625kHz
Vertical Frequency:	59.94Hz	50.00Hz
Gain:	AGC (0-20dB)	
S/N Ratio:	>48dB (AGC Off)	
Gamma:	0.6	
Sync:	Internal	
Minimum Illumination: "H" Version on pg136	0.06 Lux @ F1.2, 20 IRE 0.18 Lux @ F1.2, 50 IRE	0.06 Lux @ F1.2, 20 IRE 0.2 Lux @ F1.2, 50 IRE
Electronic Shutter:	1/60	1/50
Electronic Iris:	1/60 ~ 1/100,000	1/50 ~ 1/100,000
Video Out:	1.0Vp-p, 75Ω	
Lens Mount:	CS Mount, C Mount (w/ adapter), Micro Lens Mount	
Power Supply:	12V DC ± 10%	
Power Consumption:	1.2W, 100mA	
Operating Temperature:	-10° ~ 45° C (14° F ~ 113° F)	
Storage Temperature:	-30° ~ 60° C (-22° F ~ 140° F)	
Dimensions:	35 (W) x 35 (H) x Var. (D) mm (1.37" x 1.37" x Var.)	
Weight:	15g (0.53oz)	

Sentech America  
1345 Valwood Parkway  
Suite 320  
Carrollton, TX 75006  
USA

Toll Free:  
(877) 736-8324  
Telephone:  
(972) 481-9223  
Fax:  
(972) 481-9209



LEN-B2.5

### Accessories

#### Cables

CAB-3BNC  
CAB-6BNC

#### Power Supplies

45-601  
45-752A

#### Lenses (For 1/3" & 1/4" CCD)

Model No.	Focal Length
LEN-B2.5	2.5mm
LEN-B3.6	3.6mm
LEN-B6	6mm
LEN-B8	8mm
LEN-B16	16mm

#### Lens Mount

C-Mount Adapter

## STC-160/165 Series

### Analog B/W Board Cameras



STC-160 (EIA, 570 TVL)  
STC-165 (CCIR, 560 TVL)

The STC-160 & STC-165 is a 1/3" high-resolution analog machine vision camera series in a single board. Small in size, this camera offers many features and functions not found on most board-level cameras. Like most Sentech cameras, the STC-160 & STC-165 series comes in board-level and cased version cameras.

### FEATURES

- 1/3" CCD MONOCHROME
- GAMMA 0.45 OR 1.0 SWITCHABLE
- 570 TV LINES (EIA) OR 560 TV LINES (CCIR)
- >48dB S/N RATIO (AGC OFF)
- FIELD INTEGRATION
- INTERLACE / NON-INTERLACE
- INTERNAL / EXTERNAL SYNC
- CS MOUNT OR MICRO LENS MOUNT
- DIMENSIONS: 45 (W) x 45 (H) x VAR. (D) mm

# ANALOG MONOCHROME BOARD

## EIA & CCIR



Models	STC-160	STC-165
Image Sensor:	1/3" IT CCD Monochrome	
Horizontal Resolution:	570 TV Lines	560 TV Lines
Vertical Resolution:	350 TV Lines	410 TV Lines
Signal Format:	EIA	CCIR
Scanning System:	2.1 Interlace	
Integration Mode:	Field	
Frame Rate:	30 fps	
Effective Picture Element:	768 (H) x 494 (V)	752 (H) x 582 (V)
Chip Size (mm):	5.59 (H) x 4.68 (V)	
Cell Size (μm):	6.35 (H) x 7.40 (V)	6.50 (H) x 6.25 (V)
Horizontal Frequency:	15.734kHz	15.625kHz
Vertical Frequency:	59.94Hz	50.00Hz
Gain:	AGC / Manual (0-20dB)	
S/N Ratio:	>56dB (AGC Off)	
Gamma:	0.45 / 1.0	
Sync:	Internal / External (HD/VD), Auto Switching by HD Input	
Minimum Illumination:	0.18 Lux @ F1.2, 20 IRE	0.17 Lux @ F1.2, 20 IRE
"H" Version on pg136	0.44 Lux @ F1.2, 50 IRE	0.44 Lux @ F1.2, 50 IRE
Electronic Shutter:	1/60 (1/50), 1/100 (1/120), 1/250, 1/500, 1/1,000, 1/2,000, 1/4,000, 1/10,000	
Electronic Iris:	1/60 ~ 1/100,000	1/50 ~ 1/100,000
Video Out:	1.0Vp-p, 75Ω	
Lens Mount:	CS Mount, C Mount (w/ adapter), Micro Lens Mount	
Power Supply:	12V DC ± 10%	
Power Consumption:	1.68W, 140mA	
Operating Temperature:	-10° ~ 45° C (14° F ~ 113° F)	
Storage Temperature:	-30° ~ 60° C (-22° F ~ 140° F)	
Dimensions:	45 (W) x 45 (H) x VAR. (D) mm (1.77" x 1.77" x VAR.)	
Weight:	20g (0.71oz)	

Sentech America  
1345 Valwood Parkway  
Suite 320  
Carrollton, TX 75006  
USA

Toll Free:  
(877) 736-8324  
Telephone:  
(972) 481-9223  
Fax:  
(972) 481-9209

## STC-170/175 Series

Analog B/W Board Cameras



STC-170 (EIA, 570 TVL)  
STC-175 (CCIR, 560 TVL)



LEN-B6

### Accessories

#### Cables

CAB-3BNC  
CAB-6BNC

#### Power Supplies

45-601  
45-752A

#### Lenses (For 1/3" & 1/4" CCD)

Model No.	Focal Length
LEN-B2.5	2.5mm
LEN-B3.6	3.6mm
LEN-B6	6mm
LEN-B8	8mm
LEN-B16	16mm

#### Lens Mount

C-Mount Adapter

## FEATURES

- 1/3" CCD MONOCHROME
- EIA OR CCIR FORMATS
- INTERNAL / EXTERNAL SYNC. (HD/VD)
- 570 TV LINES (EIA) OR 560 TV LINES (CCIR)
- FIELD / FRAME INTEGRATION
- INTEGRATION HOLD
- INTERLACE / NON-INTERLACE
- CS MOUNT OR MICRO LENS MOUNT



#### STC-R170

The STC-R170 has the same features as the STC-170 with a remote CCD

# ANALOG MONOCHROME BOARD

EIA & CCIR



with micro lens

Models	STC-170	STC-175
<b>Image Sensor:</b>	1/3" IT CCD Monochrome	
<b>Horizontal Resolution:</b>	570 TV Lines	560 TV Lines
<b>Vertical Resolution:</b>		
- Field	350 TV Lines	410 TV Lines
- Frame	485 TV Lines	575 TV Lines
<b>Signal Format:</b>	EIA	CCIR
<b>Scanning System:</b>	2.1 Interlace / Non-Interlace (w/external sync)	
<b>Integration Mode:</b>	Field / Frame Switchable	
<b>Frame Rate:</b>	30 fps	
<b>Effective Picture Element:</b>	768 (H) x 494 (V)	752 (H) x 582 (V)
<b>Horizontal Frequency:</b>	15.734kHz	15.625kHz
<b>Vertical Frequency:</b>	59.94Hz	50.00Hz
<b>Integration Hold:</b>	Yes, via Start/Stop TTL Signal, Vertical Reset	
<b>Gain:</b>	AGC / Fixed, Manual (POT Adjustable)	
<b>S/N Ratio:</b>	>56dB (AGC Off)	
<b>Gamma:</b>	0.45 or 1.0 Switchable	
<b>Sync:</b>	Internal / External (HD/VD), Auto Switching by HD Input	
<b>Minimum Illumination:</b>	0.01 Lux @ F1.2, 20 IRE (AGC On) 0.04 Lux @ F1.2, 50 IRE (AGC On)	
<b>Electronic Shutter:</b>	1/30, 1/60 (1/50), 1/100 (1/120), 1/250, 1/500, 1/1,000, 1/2,000, 1/4,000, 1/10,000	
<b>Electronic Iris:</b>	N/A	
<b>Video Out:</b>	1.0Vp-p, 75Ω	
<b>Lens Mount:</b>	CS Mount, C Mount (w/ adapter), Micro Lens Mount	
<b>Power Supply:</b>	12V DC ± 10%	
<b>Power Consumption:</b>	1.32W, 110mA ± 20%	
<b>Operating Temperature:</b>	-10° ~ 45° C (14° F ~ 113° F)	
<b>Storage Temperature:</b>	-30° ~ 60° C (-22° F ~ 140° F)	
<b>Dimensions:</b>	45 (W) x 45 (H) x Var. (D) mm (1.77" x 1.77" x Var.)	
<b>Weight:</b>	45g (1.58oz)	

Sentech America  
1345 Valwood Parkway  
Suite 320  
Carrollton, TX 75006  
USA

Toll Free:  
(877) 736-8324  
Telephone:  
(972) 481-9223  
Fax:  
(972) 481-9209

## STC-172/177 Series

Analog B/W Board Cameras



STC-172 (EIA, 570 TVL)  
STC-177 (CCIR, 560 TVL)



LEN-B16

### Accessories

#### Cables

CAB-3BNC  
CAB-6BNC

#### Power Supplies

45-601  
45-752A

#### Lenses

Various C-Mount Lenses

The STC-172/177 series is a board level machine vision camera. These cameras feature a 1/2" CCD available in either EIA or CCIR. These cameras offer an integration HOLD feature for low light applications, field/frame integration, internal/external sync and an interlace/non-interlace output.

### FEATURES

- 1/2" CCD MONOCHROME
- EIA OR CCIR FORMATS
- EXTERNAL SYNC (HD/VD)
- FRAME / FIELD INTEGRATION
- INTEGRATION HOLD FEATURE
- INTERLACE / NON-INTERLACE
- C-MOUNT
- SIZE: 45(W) x 45 (H) x VARIABLE (D) mm

# ANALOG MONOCHROME BOARD

EIA & CCIR



Models	STC-172	STC-177
Image Sensor:	1/2" IT CCD Monochrome	
Horizontal Resolution:	570 TV Lines	560 TV Lines
Vertical Resolution:		
- Field	350 TV Lines	410 TV Lines
- Frame	485 TV Lines	575 TV Lines
Signal Format:	EIA	CCIR
Scanning System:	2.1 Interlace / Non-Interlace (w/external sync)	
Integration Mode:	Field / Frame Switchable	
Frame Rate:	30 fps	
Effective Picture Element:	768 (H) x 494 (V)	752 (H) x 582 (V)
Horizontal Frequency:	15.734kHz	15.625kHz
Vertical Frequency:	59.94Hz	50.00Hz
Integration Hold:	Yes, via Start/Stop TTL Signal, Vertical Reset	
Gain:	AGC / Fixed, Manual (POT Adjustable)	
S/N Ratio:	>56dB (AGC Off)	
Gamma:	0.45 or 1.0 Switchable	
Sync:	Internal / External (HD/VD), Auto Switching by HD Input	
Minimum Illumination:	0.01 Lux @ F1.2, 20 IRE (AGC On) 0.04 Lux @ F1.2, 50 IRE (AGC On)	
Electronic Shutter:	1/30, 1/60 (1/50), 1/100 (1/120), 1/250, 1/500, 1/1,000, 1/2,000, 1/4,000, 1/10,000	
Electronic Iris:	N/A	
Video Out:	1.0Vp-p, 75Ω	
Lens Mount:	C Mount	
Power Supply:	12V DC ± 10%	
Power Consumption:	1.32W, 110mA	
Operating Temperature:	-10° ~ 45° C (14° F ~ 113° F)	
Storage Temperature:	-30° ~ 60° C (-22° F ~ 140° F)	
Dimensions:	45 (W) x 45 (H) x Var. (D) mm (1.77" x 1.77" x Var.)	
Weight:	45g (1.58oz)	

Sentech America  
1345 Valwood Parkway  
Suite 320  
Carrollton, TX 75006  
USA

Toll Free:  
(877) 736-8324  
Telephone:  
(972) 481-9223  
Fax:  
(972) 481-9209

## STC-42A/43A Series

Analog B/W Cube Cameras



STC-E42A (EIA) / STC-C42A (CCIR) 1/2"  
STC-E43A (EIA) / STC-C43A (CCIR) 1/3"

The STC-42A/43A series cameras are analog cube cameras designed for machine vision. These are available with a 1/2" or 1/3" CCD in either EIA or CCIR formats. They feature either field/frame integration, internal or external sync and RS232 communications. The small configuration allows them to be utilized in very tight spaces.

### FEATURES

- 1/2" OR 1/3" CCD MONOCHROME
- AVAILABLE IN EIA & CCIR FORMATS
- 570 (EIA) AND 560 (CCIR) TV LINES
- FIELD / FRAME INTEGRATION
- INTERNAL / EXTERNAL SYNC
- GAMMA 0.45 OR 1.0
- C MOUNT
- DIMENSIONS: 28(W) x 28(H) x 46.3(D) mm
- 12V DC POWER

### Accessories

#### Cables

12W-02, 03, 05  
12W-2P

#### Power Supplies

45-752A  
PWR-PSI450-6

#### Lenses

Various C-Mount Lenses  
Various Telecentric Lenses

# ANALOG MONOCHROME CUBE EIA & CCIR



Models	STC-E42A (EIA) STC-C42A (CCIR)	STC-E43A (EIA) STC-C43A (CCIR)
Image Sensor:	1/2" IT CCD Monochrome	1/3" IT CCD Monochrome
Horizontal Resolution:	570 TV Lines (EIA)	560 TV Lines (CCIR)
Scanning Method:	2:1 Interlace	
Integration Mode:	Field / Frame	
Frame Rate:	30 fps	
Effective Picture Element:	795 (H) x 595 (V) (EIA)	752 (H) x 582 (V) (CCIR)
Active Picture Element:	768 (H) x 494 (V) (EIA)	752 (H) x 582 (V) (CCIR)
Chip Size (mm):	7.40 (H) x 5.95 (V)	5.59 (H) x 4.68 (V)
Cell Size (µm):	8.4 (H) x 9.8 (V) (EIA) 8.6 (H) x 8.3 (V) (CCIR)	6.35 (H) x 7.40 (V) (EIA) 6.50 (H) x 6.25 (V) (CCIR)
Pixel Clock (HD freq.):	14.318MHz (EIA)	14.1875MHz (CCIR)
Horizontal Frequency:	15.734kHz (EIA)	15.625kHz (CCIR)
Vertical Frequency:	59.94Hz (EIA)	50.00Hz (CCIR)
Gain:	0 to 27dB	
S/N Ratio:	56dB (GAIN 0dB)	
Gamma:	1.0 / 0.45	
Sync:	Internal / External (Automatic Switching)	
Communication:	RS232 via 12 pin connector	
Minimum Illumination:	0.04 Lux @ F1.2, 27dB Gain, 20 IRE 0.11 Lux @ F1.2, 27dB Gain, 50 IRE	
Electronic Shutter:	Dip Switch: 1/60 (1/50), 1/100 (1/120), 1/250, 1/500, 1/1,000, 1/2,000, 1/4,000, 1/8,000, 1/10,000, 1/20,000, 1/100,000 Via RS232: 1/60 (1/50) ~ 1/100,000 (Variable at every H and clock)	
Video Output:	1.0Vp-p 75Ω, DC coupling	
Lens Mount:	C Mount	
Optical Filter:	No IR cut filter	
Optical Center Accuracy:	Positional accuracy in H and V directions: ± 0.31mm Rotational accuracy of H and V: ± 2.1 deg.	
Shock and Vibration:	Vibration: 10G (20 to 200Hz) Shock: 70G (3 directions, 3 times each)	
Power Supply:	12V DC ± 10%	
Power Consumption:	< 1.8W, 150mA	
Operating Temperature:	-5° ~ 50° C	
Storage Temperature:	-30° ~ 65° C	
Dimensions:	28 (W) x 28 (H) x 46.3* (D) mm (1.1" x 1.1" x 1.8") *(Including lens mount and connector)	
Weight:	52g (2.08oz)	

Sentech America  
1345 Valwood Parkway  
Suite 320  
Carrollton, TX 75006  
USA

Toll Free:  
(877) 736-8324  
Telephone:  
(972) 481-9223  
Fax:  
(972) 481-9209



STC-131BJ



STC-131BT

### Accessories

#### Cables

CAB-3BNC  
CAB-6BNC

#### Power Supplies

45-601  
45-752A

#### Lenses

Various CS-Mount Lenses  
Various C-Mount Lenses

## STC-131/136 Series

### Analog B/W Cased Cameras



STC-131 (EIA, 380 TVL)  
STC-136 (CCIR, 380 TVL)

The STC-131/136 cased series is an inexpensive, compact camera series. This camera has auto gain control and is available w/ an EXview CCD. The STC-131 camera comes with a CS-Mount (C-Mount with an adapter) and a composite video output.

### FEATURES

- 1/3" CCD MONOCHROME
- AVAILABLE IN EIA & CCIR FORMATS
- 380 TV LINES HORIZONTAL RESOLUTION
- AGC: ON (0-20dB)
- MINIMUM ILLUMINATION 0.05 LUX @ F1.2, 50 IRE
- CS MOUNT (C-MOUNT WITH ADAPTER)
- SIZE: 40 (W) x 40 (H) x 45 (D) mm

Note: DC Auto Iris Lens Control is Disabled

# ANALOG MONOCHROME CASED EIA & CCIR



Models	STC-131	STC-136
Image Sensor:	1/3" IT CCD Monochrome	
Horizontal Resolution:	380 TV Lines	
Signal Format:	EIA	CCIR
Scanning System:	2.1 Interlace	
Integration Mode:	Field	
Frame Rate:	30 fps	
Effective Picture Element:	510 (H) x 492 (V)	500 (H) x 582 (V)
Horizontal Frequency:	15.734kHz	15.625kHz
Vertical Frequency:	59.94Hz	50.00Hz
Gain:	AGC (0-20dB)	
S/N Ratio:	>48dB (AGC Off)	
Gamma:	0.6	
Sync:	Internal	
Minimum Illumination:	0.06 Lux @ F1.2, 20 IRE "H" Version on pg136 0.18 Lux @ F1.2, 50 IRE	0.06 Lux @ F1.2, 20 IRE 0.2 Lux @ F1.2, 50 IRE
Electronic Shutter:	1/60	1/50
Electronic Iris:	1/60 ~ 1/100,000	1/50 ~ 1/100,000
Video Out:	1.0Vp-p, 75Ω	
Lens Mount:	CS Mount, C Mount (w/ adapter)	
Power Supply:	12V DC ± 10%	
Power Consumption:	1.2W, 100mA	
Operating Temperature:	-10° ~ 45° C (14° F ~ 113° F)	
Storage Temperature:	-30° ~ 60° C (-22° F ~ 140° F)	
Dimensions:	40 (W) x 40 (H) x 45 (D) mm (1.57" x 1.57" x 1.77")	
Weight:	100g (3.53oz)	

Sentech America  
1345 Valwood Parkway  
Suite 320  
Carrollton, TX 75006  
USA

Toll Free:  
(877) 736-8324  
Telephone:  
(972) 481-9223  
Fax:  
(972) 481-9209



STC-160BC



STC-160BT

### Accessories

#### Cables

CAB-3BNC  
CAB-6BNC  
12W-02, 03, 05  
12W-2P

#### Power Supplies

45-601  
45-752A  
PWR-PSISP-6

#### Lens Mount

C-Adapter

## STC-160/165 Series

### Analog B/W Cased Cameras



STC-160 (EIA, 570 TVL)  
STC-165 (CCIR, 560 TVL)

The STC-160 & STC-165 Cased series is a low-cost, high resolution machine vision camera, which offers users a high-resolution 1/3" CCD, fixed shutter speeds from 1/60<sup>th</sup> (1/50<sup>th</sup>) to 1/100,000<sup>th</sup> sec, external sync (HD/VD), and much more.

### FEATURES

- 1/3" CCD MONOCHROME
- AVAILABLE IN EIA & CCIR FORMATS
- 570 TV LINES HORIZONTAL RESOLUTION
- GAMMA 0.45 OR 1.0 SWITCHABLE
- SYNC: INT. OR EXT. (HD / VD) (BC MODEL ONLY)
- FIELD INTEGRATION
- ELECTRONIC IRIS
- ELECTRONIC SHUTTER
- CS-MOUNT LENS MOUNT (C-MOUNT WITH ADAPTER)
- SIZE: 51(W) x 51(H) x 55.5(D) mm

# ANALOG MONOCHROME CASED EIA & CCIR



Models	STC-160	STC-165
Image Sensor:	1/3" IT CCD Monochrome	
Horizontal Resolution:	570 TV Lines	560 TV Lines
Vertical Resolution:	350 TV Lines	410 TV Lines
Signal Format:	EIA	CCIR
Scanning System:	2.1 Interlace	
Integration Mode:	Field	
Frame Rate:	30 fps	
Effective Picture Element:	768 (H) x 494 (V)	752 (H) x 582 (V)
Chip Size (mm):	5.59 (H) x 4.68 (V)	
Cell Size (μm):	6.35 (H) x 7.40 (V)	6.50 (H) x 6.25 (V)
Horizontal Frequency:	15.734kHz	15.625kHz
Vertical Frequency:	59.94Hz	50.00Hz
Gain	AGC / Manual (0-20dB)	
S/N Ratio:	>56dB (AGC Off)	
Gamma:	0.45 / 1.0	
Sync:	Internal / External (HD/VD), Auto Switching by HD Input	
Minimum Illumination:	0.18 Lux @ F1.2, 20 IRE	0.17 Lux @ F1.2, 20 IRE
"H" Version on pg136	0.44 Lux @ F1.2, 50 IRE	0.44 Lux @ F1.2, 50 IRE
Electronic Shutter:	1/60 (1/50), 1/100 (1/120), 1/250, 1/500, 1/1,000, 1/2,000, 1/4,000, 1/10,000	
Electronic Iris:	1/60 ~ 1/100,000	1/50 ~ 1/100,000
Video Out:	1.0Vp-p, 75Ω	
Lens Mount:	CS Mount, C Mount (w/ adapter), Micro Lens Mount	
Power Supply:	12V DC ± 10%	
Power Consumption:	1.68W, 140mA	
Operating Temperature:	-10° ~ 45° C (14° F ~ 113° F)	
Storage Temperature:	-30° ~ 60° C (-22° F ~ 140° F)	
Dimensions:	51 (W) x 51 (H) x 55.5 (D) mm (2.0" x 2.0" x 2.18")	
Weight:	180g (6.35oz)	

Sentech America  
1345 Valwood Parkway  
Suite 320  
Carrollton, TX 75006  
USA

Toll Free:  
(877) 736-8324  
Telephone:  
(972) 481-9223  
Fax:  
(972) 481-9209



STC-170BC



STC-170BT

### Accessories

#### Cables

CAB-3BNC  
CAB-6BNC  
12W-02, 03, 05  
12W-2P

#### Power Supplies

45-601  
45-752A  
PWR-PSISP-6

#### Lens Mount

C-Adapter (not for 172 or 177)

## STC-170/175 Series

### Analog B/W Cased Cameras



STC-170/172 (EIA, 570 TVL)  
STC-175/177 (CCIR, 560 TVL)

The STC-170/175 and 172/177 cased camera series is a very low cost series of machine vision cameras. These cameras feature a 1/3" CCD available in either EIA or CCIR. These cameras offer an integration HOLD feature for low light applications, field/frame integration, Internal/ External sync and an Interlace/Non-Interlace output.

### FEATURES

- 1/3" OR 1/2" CCD MONOCHROME
- AVAILABLE IN EIA & CCIR FORMATS
- 570 TV LINES HORIZONTAL RESOLUTION
- FIELD / FRAME INTEGRATION
- INTEGRATION HOLD FEATURE
- EXTERNAL SYNC (170/175 BC MODEL)
- INTERLACE / NON-INTERLACE
- CS-MOUNT LENS MOUNT (C-MOUNT WITH ADAPTER)
- SIZE: 51(W) x 51(H) x 55.5(D) mm

# ANALOG MONOCHROME CASED EIA & CCIR



Models	STC-170 (EIA) STC-175 (CCIR)	STC-172 (EIA) STC-177 (CCIR)
<b>Image Sensor:</b>	1/3" IT CCD Monochrome	1/2" IT CCD Monochrome
<b>Horizontal Resolution:</b>	570 TV Lines (EIA)	560 TV Lines (CCIR)
<b>Vertical Resolution:</b>		
- Field	350 TV Lines (EIA)	410 TV Lines (CCIR)
- Frame	485 TV Lines (EIA)	575 TV Lines (CCIR)
<b>Signal Format:</b>	EIA or CCIR	
<b>Scanning System:</b>	2.1 Interlace / Non-Interlace (w/external sync)	
<b>Integration Mode:</b>	Field / Frame Switchable	
<b>Frame Rate:</b>	30 fps	
<b>Effective Picture Element:</b>	768 (H) x 494 (V) (EIA)	752 (H) x 582 (V) (CCIR)
<b>Horizontal Frequency:</b>	15.734kHz (EIA)	15.625kHz (CCIR)
<b>Vertical Frequency:</b>	59.94Hz (EIA)	50.00Hz (CCIR)
<b>Integration Hold:</b>	Yes, via Start/Stop TTL Signal, Vertical Reset	
<b>Gain:</b>	AGC / Fixed, Manual (POT Adjustable)	
<b>S/N Ratio:</b>	>56dB (AGC Off)	
<b>Gamma:</b>	0.45 or 1.0 Switchable	
<b>Sync:</b>	Internal / External (HD/VD), Auto Switching by HD Input	
<b>Minimum Illumination:</b>	0.01 Lux @ F1.2, 20 IRE (AGC On) 0.04 Lux @ F1.2, 50 IRE (AGC On) <i>"H" Version on pg136</i>	
<b>Electronic Shutter:</b>	1/30, 1/60 (1/50), 1/100 (1/120), 1/250, 1/500, 1/1,000, 1/2,000, 1/4,000, 1/10,000	
<b>Electronic Iris:</b>	N/A	
<b>Video Out:</b>	1.0Vp-p, 75Ω	
<b>Lens Mount:</b>	CS and C Mount (w/ adapter)	C Mount
<b>Power Supply:</b>	12V DC ± 10%	
<b>Power Consumption:</b>	1.68W, 140mA	
<b>Operating Temperature:</b>	-10° ~ 45° C (14° F ~ 113° F)	
<b>Storage Temperature:</b>	-30° ~ 60° C (-22° F ~ 140° F)	
<b>Dimensions:</b>	51 (W) x 51 (H) x 55.5 (D) mm (2.04" x 2.04" x 2.22")	
<b>Weight:</b>	180g (6.35 oz)	