

SCHOTT® LLS - LED Light Source

Longer Life, Lower Energy Consumption



SCHOTT
glass made of ideas

Hybrid solution pairs LEDs with Fiber Optics

The SCHOTT LLS offers several advantages over other types of fiber optic light sources used in machine vision applications, including:

- § Long life-time (50,000 hours)
- § Fits all COLDVision light guides
- § Fast strobing capabilities (maximum 1 KHz pulse rate, maximum pulse width 1 msec, duty 1/10)
- § Low power consumption (less than 15 watts)
- § Immunity to vibration and shock
- § Instantaneous switching
- § Small footprint
- § RoHS compliant



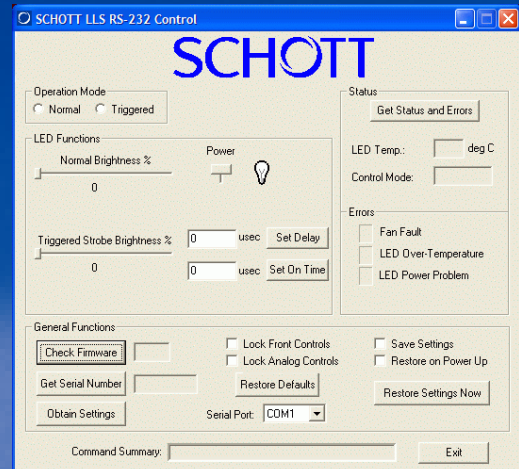
Part number A20950

Characteristics:

Dimensions	Length 197mm (7.75 in) Width 129mm (5.08 in) Height 63mm (2.48 in)
Weight	862 grams (1.9 lbs)
Operating Temperature	-20° C (4 ° F) to 40° C (104° F)
Part numbers / Colors	A20950 Red A20950.1 White A20950.2 Green A20950.3 Yellow A20950.4 Blue A20950.5 UV

The LLS offers users 4 different types of control interfaces - a continuous intensity control knob, USB 2.0, RS-232 or analog 0-5 Volt.

The auto-sensing inputs eliminate the need to switch manually between the modes. The unit also features a user control lock-out via the USB and RS-232 controls.



Screen shot of the RS-232 control