

Brightfield ringlight, S80-50



Brightfield ringlight, S40-55



Transmitted light stage

VisiLED Brightfield Lightheads

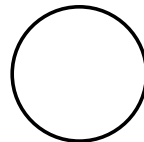
Illumination system specially developed for stereo microscopy and macroscopy applications.

5 Lightheads for brightfield illumination techniques:

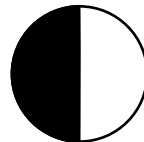
- 3 Brightfield ringlights for high and low brightness requirements
- 1 Transmitted light stage for brightfield applications

Features

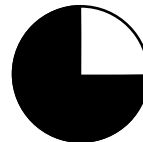
- Easily adaptable to microscope objectives by means of thumb screw and clamp ring
- Homogenous illumination
- Best white quality: typically 6,000 K
- Long operating life: typically 10,000 h by actively controlling the LED's temperature
- Segments controllable in different preset modes for optimum contrasting:



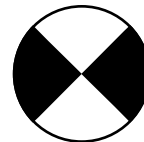
full



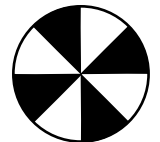
half



quart



dual



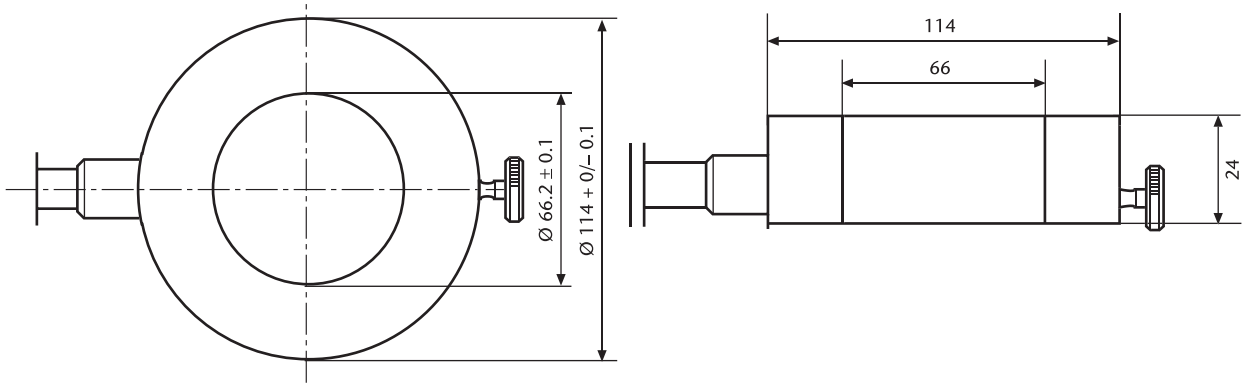
4 point

- Manufactured in the EU.

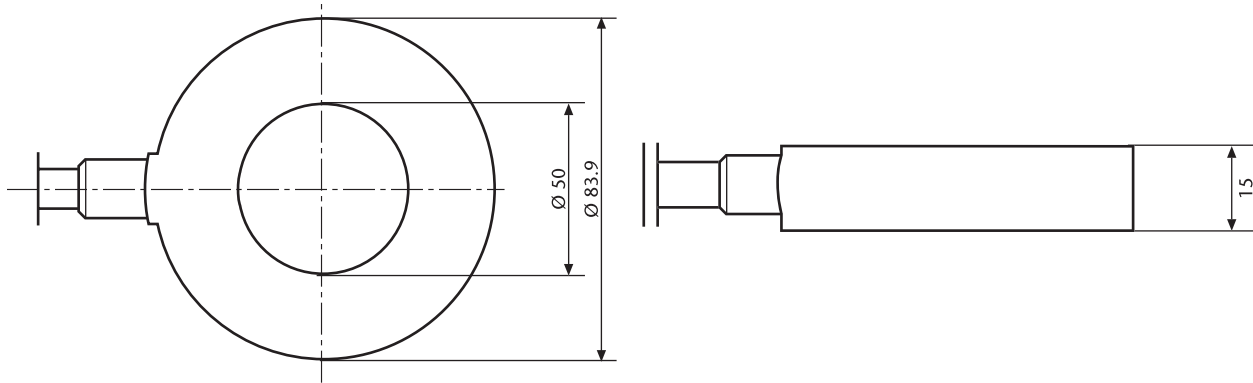
Ringlights and Accessories						
Description	Part. No.	Working Distance (WD)	Light flux	Max. Illuminance	Inner Ø	Outer Ø
LED Brightfield ringlight "S40-55"	400 100	55-110 mm (2.17"-4.33")	50 lm	35 klx (75 mm) (2.95")	66 mm (2.60")	114 mm (4.49")
LED Brightfield ringlight "S80-25"	400 225	25-50 mm (0.98"-1.97")	100 lm	120 klx (30 mm) (1.18")	66 mm (2.60")	114 mm (4.49")
LED Brightfield ringlight "S80-55"	400 255	55-135 mm (2.17"-5.32")	100 lm	75 klx (70 mm) (2.76")	66 mm (2.60")	114 mm (4.49")
Transmitted light stage	400 400		85 lm	8000 cd/m ² (luminance in center)	active 50 mm (1.97")	84 mm (3.31")
Accessories	400 500	Combi-kit to combine one brightfield and the darkfield for mixed illumination.				

LED COMPONENTS FOR MICROSCOPY

VisiLEDs MC Series



Brightfield ringlight



Transmitted light stage