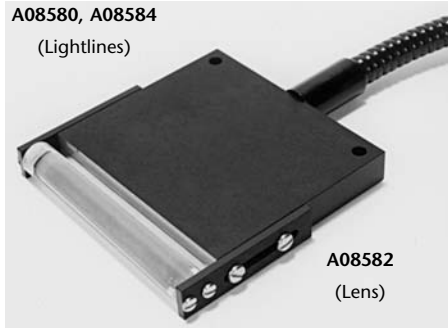




A08579

1" (25) Dual Lightline, A08579



A08580, A08584
(Lightlines)

A08582
(Lens)

One leg of Dual or Quad 3" (76) Lightline with
Cylindrical Lens

1", 2" & 3" Lightlines

Alternative to a fiber optic bundle for more precise illumination in Microscopy and Inspection applications.

Features

- Small, uniform field of view.
- Narrow body design and offset position of the line on 1" and 2" bodies allows close positioning of the line against microscope slides (for darkfield affect).
- 3" (76)* models are calibrated to ± 8 gray scale levels at a mean of 200 with a gamma setting of 1.0 to deliver optimum uniformity (see chart). Uniformity of 1" (25) and 2" (51) lines is better than ± 8 gray scales. Calibration specifications and line scans are available upon request.
- Standard input ferrule fits ColdVision Series light sources.
- Rugged aluminum body and light source ferrule with black anodized finish. PVC covered metal tubing protects the fiber bundle.
- M6 threads are provided on the 1" (25) and 2"(51) lightline bodies for easy mounting. See drawing on back.
- Lightline holders and support products available in Support Apparatus for Lightlines section of the product catalog.
- Custom lengths, bundle exits, multiple combinations (dual, quad, etc.) and line widths can be designed for your unique requirements. In addition, combine lightlines with other fiber optic components in a single input to create unique lighting effects. Lead-time required.
- Cylindrical and apertured lenses are available as standard products for most lightline models. They can be custom made for all models. More details found in the Fiber Optic Accessory Section of the product catalog.
- Manufactured in the USA.

LIGHTLINES

1", 2", & 3" Lightlines and Lenses					
Part No.	Line Dimensions	Input Active Fiber Dia.	Gray Scale Uniformity [^]	Part No. for Lens	
	Length x Width			Cylindrical	Apertured
Single line configuration w/36" bundle length					
A08588	1" x .070" (25 x 1.8)*	.30" (7.6)	< ± 8	A08571	A08573
A08589	2" x .035" (51 x .89)	.30" (7.6)	< ± 8	A08572	A08574
Dual line configuration w/36" bundle length					
A08579	1" x .070" (25 x 1.8)	.43" (10.9)	< ± 8	A08571	A08573
A08583	2" x .035" (51 x .89)	.43" (10.9)	< ± 8	A08572	A08574
A08580	3" x .018" (76 X .46)	.36" (9.1)	± 8	A08582	Custom
Quad line configuration w/36" bundle length					
A08584	3" x .018" (76 X .46)	.51" (13.0)	± 8	A08582	Custom

[^] Gamma setting of 1.0
* Dimensions in () are in mm

1", 2" & 3" Lightlines

Dimensions in () are in mm

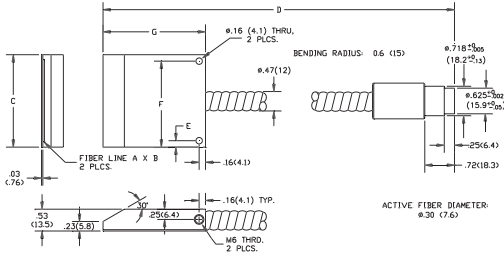
Input: Black Anodized Aluminum

Body: Black Anodized Aluminum

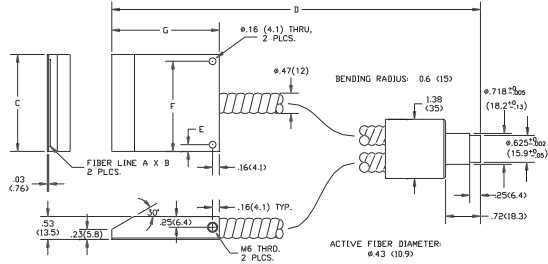
Sheathing: PVC Covered Metal Tubing

Warning: This product is manufactured with glass fiber. Not for use in cable/hose carrier. Call SCHOTT to discuss moving cable/hose carrier applications.

TECHNICAL SPECIFICATIONS



A08588 & A08589
Single Lightlines



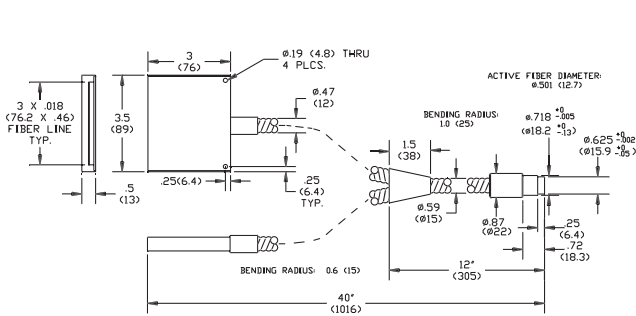
A08579 & A08583
Dual Lightlines

Matrix for A08588 & A08589 Lightlines

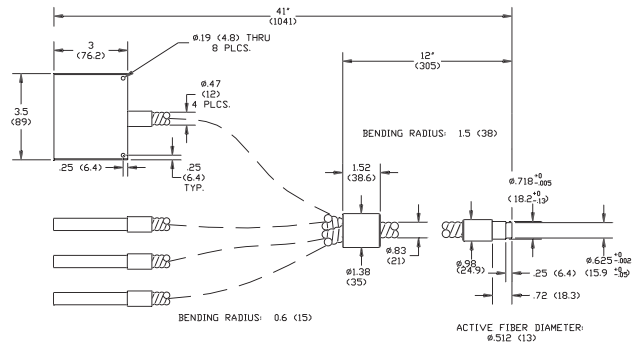
Part No.	A	B	C	D	E	F	G
A08588	1" (25)	.07" (1.8)	1.25" (31.8)	38" (965.2)	.16" (4.1)	1.1" (28)	2" (50.8)
A08589	2" (51)	.035" (.89)	2.25" (57.2)	38.5 (978)	.16" (4.1)	2.1" (53)	2.5" (63.5)

Matrix for A08579 & A08583 Lightlines

Part No.	A	B	C	D	E	F	G
A08579	1" (25)	.07" (1.8)	1.25" (31.8)	38" (965.2)	.16" (4.1)	1.1" (28)	2" (50.8)
A08583	2" (51)	.035" (.89)	2.25" (57.2)	38.5 (978)	.16" (4.1)	2.1" (53)	2.5" (63.5)



A08580
Dual Lightline



A08584
Quad Lightline