

5000xp

The Thermal-Eye 5000xp is a high-performance pan/tilt thermal imaging camera for mobile applications in the security, law enforcement and maritime markets. The 5000xp is an upgrade from the popular Thermal-Eye 4000M and now features 320 x 240 resolution.

With natural light



With Thermal-Eye



Soldiers seen through smoke



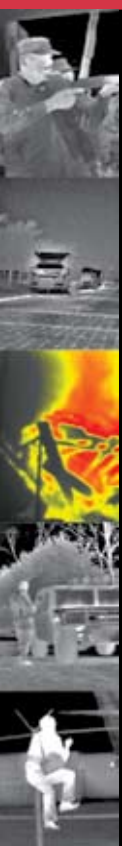
Selected #1 in image quality in recent independent surveys.

Applications:

- Law Enforcement
- Security
- Recreational Boating
- Search and Rescue
- Routine Nighttime Patrols
- Nighttime Navigation

Benefits:

- Improved 320 x 240 resolution gives users better image clarity and sharpness
- Provides 360° pan/tilt capability to monitor surrounding environment
- Observes suspicious activity from the safety of a vehicle or boat
- Monitors full perimeter in darkness, in any weather and over long distances
- Spots potential criminal activity or safety hazards in complete darkness
- Detects human activity up to 1500 feet away



With Thermal-Eye

Motorcycle theft

Features:

- "Gold-Standard" BST image quality with clear 320 x 240 resolution
- Rugged, weather-resistant pan/tilt housing
- Enhanced 24° x 18° FOV, f/1.0 lens
- Joystick controlled 360 degree continuous pan, -20 degree/+180 degree tilt
- Easily roof-mounted on any vehicle or marine craft
- Video-out for remote monitor or VCR
- Immunity to damage from solar radiation

See the Unseen™

5000xp TECHNICAL SPECIFICATIONS:

FEATURES		THERMAL-EYE 5000xp
Infrared Focal Plane Array	Type & Material	Uncooled Ferroelectric, Barium Strontium Titanate (BST)
	Resolution/Pitch	320 x 240 / 48.5µm
	Spectral Response	7-14µm
	Window Type	Silicon with durable hard carbon exterior coating
Thermal Imaging Performance	Start-up Time	~ 45 seconds
	Contrast/Brightness	Fully Automatic
	Range to Detect Human Activity	Man-sized target at 1500ft (450m) depending on object size and contrast
Optics	Field of View (f/#)	24° x 18° (f/1.0)
	Min. Focus Distance	~ 25ft (8m)
	Focus Method	Fixed (Compensated automatically for temperature variations)
	Aperture	f/1.0
Infrared Video	Output Format	NTSC Compatible
	IR Polarity	White Hot
Power	Input Voltage	9.5 to 16VDC
Environmental	Operating Temperature	-40°C to 55°C
	Water Resistance	IEC level IPX6 (Not submersible)
	EMI/EMC	FCC Part 15 Compliant
Pan and Tilt Function	Field-of-Regard	Pan/Joystick Controller, 360° continuous — Tilt/Joystick Controlled -20° to +180°
	Pan Speed/Control	36° per second (max)/Single-speed control
Options and Accessories	Vehicle Mount Package	Thermal Camera, Pan/Tilt Housing, Joystick Controller, Electronics Box, Cable Set, Operator Manual, One Year Parts/Labor Warranty. Standard color is black.
	Marine Mount Package	Weatherized to withstand harsh marine conditions. Thermal Camera, Pan/Tilt Housing, Joystick Controller, Electronics Box, Cable Set, Operator Manual, One Year Parts/Labor Warranty. Standard color is black.
	Roof Rack	Vehicle Roof Rack, includes mounting bar (no hole) and vehicle strap kit. Vehicle year, make and model required for ordering.
Ordering Information	5000xp	1000325-0001
	Roof Bar (White)	3264568-0001*
	Roof Bar (Black)	3264568-0002*
	LCD Monitor Kit, 5.6" Flat Panel	3197573-0004
	Marine Dual Remote Kit	1000340-0001

Specifications subject to change without notice

* Contact Customer Service to order the correct vehicle mounting kit.

5000xp RevD September 2006

This material is L-3 Infrared Products general capabilities information and does not contain any controlled technical data as defined within the International Traffic in Arms Regulations (ITAR) or Export Administration Regulations (EAR).