

250D

The Thermal-Eye 250D is the most widely produced handheld thermal imaging camera available with "Gold-Standard" image quality.



Selected #1 in image quality in recent independent surveys.



Breaking and entering



Applications:

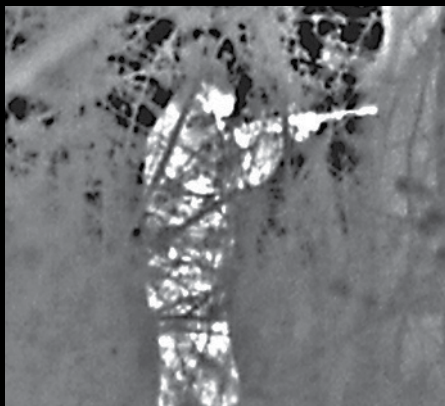
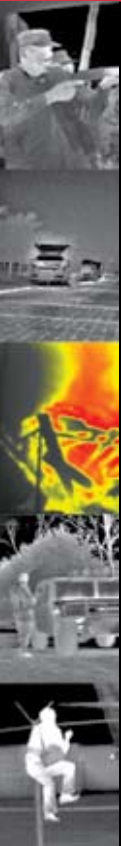
- Covert surveillance
- Search and rescue
- Border patrol
- Target detection
- Force protection
- Area and building sweeps
- Fugitive pursuit

Benefits:

- Greatly enhances vision at night or in challenging dust and smoke conditions
- Operates with no light and without the blooming effect experienced by other night vision technologies
- Remain covert while still being able to see your target
- Offers longer viewing range than traditional night vision technologies and a variety of lens selections
- Saves money, time and lives with the ability to see quickly and operate more efficiently and safely

Features:

- "Gold-Standard" BST image quality with clear 320 x 240 resolution
- Immunity to damage from solar radiation
- Longest viewing range in its class detects human activity from over 900 meters with standard lens and up to 1800 meters with 150mm lens
- 2X digital zoom
- NTSC/PAL compatible output for video recording
- High-capacity, commercially available camcorder battery



Armed fugitive in the woods

See the Unseen™

250D TECHNICAL SPECIFICATIONS:

FEATURES		THERMAL-EYE 250 DIGITAL				
Focal Plane Array	Type & Material	Uncooled Ferroelectric				
	Pixel Count (Resolution)	320 x 240				
	Spectral Response	7-14µm				
Thermal Imaging Performance	Detection Range for Human Activity	Up to 3000ft (915m) with standard 75mm lens				
	Contrast/Brightness & Pixel Processing	Automatic & manual gain/level control with advanced image processing features				
Optics	Lens Focal Length	25mm	50mm	75mm	100mm	150mm
	Field of View	(36° x 27°)	(18° x 13.5°)	(12° x 9°)	(9° x 6.6°)	(6° x 4.4°)
	Range to Detect Human Activity	1000ft (305m)	1900ft (580m)	3000ft (915m)	3700ft (1130m)	5900ft (1800m)
	Minimum Focus Distance	~18" (.5m)	~18" (.5m)	~20ft (6m)	~15ft (5m)	~25ft (8m)
	Focus Method	Manual focus with iris	Manual focus with iris	Electric motor	Electric motor	Electric motor
Video	Output Format	NTSC or PAL Compatible (RCA jack)				
	Monocular Viewfinder	Monochrome (black & white)				
	Camera Digital Zoom	1X, 2X				
Power	Power Source	NiMH Rechargeable camcorder battery (6VDC)				
	Operating Time	~ 3 hours with supplied battery				
	Standby Mode	Viewfinder off				
Environmental Characteristics	Operating Temperature	-20°C to 49°C				
	Storage Temperature	-40°C to 80°C				
	Water Resistance	Splashproof per IEC pub.529 IPX4				
	EMC Compliance	FCC Part 15 & CE Mark				
Physical Characteristics	Size	9.5" L x 4" W x 4" H (24 x 10 x 10cm)				
	Weight (w/o battery)	~ 3.4lbs (1.5 kg)				
	Mounting Provision	¼" – 20 Tripod Mount				
Ordering Information	Lens Alternatives	25mm	50mm	75mm	100mm	150mm
	Kit Part Number (NTSC)	3261604-0003	3261604-0002	3261604-0001	3261604-0004	3261604-0005
	Kit Part Number (PAL)	3261604-0013	3261604-0012	3261604-0011	3261604-0014	3261604-0015
Standard Equipment	Thermal-Eye 250D Includes:	<ul style="list-style-type: none"> • Camera w/lens cover & lens cleaning cloth • AC/DC battery charger kit (110/220VAC) • Rechargeable camcorder battery (NiMH) • Operators manual • Durable carrying case • RCA to BNC adapter 				
Optional Accessories	Accessory	Extra rechargeable battery (NiMH)		Extra battery charger kit (includes charger, DC car adapter, 110/220V AC adapter)		
	Part Number	3193777-0001		99-UNVCHRG		

Specifications subject to change without notice

250D RevD September 2006

This material is L-3 Infrared Products general capabilities information and does not contain any controlled technical data as defined within the International Traffic in Arms Regulations (ITAR) or Export Administration Regulations (EAR).