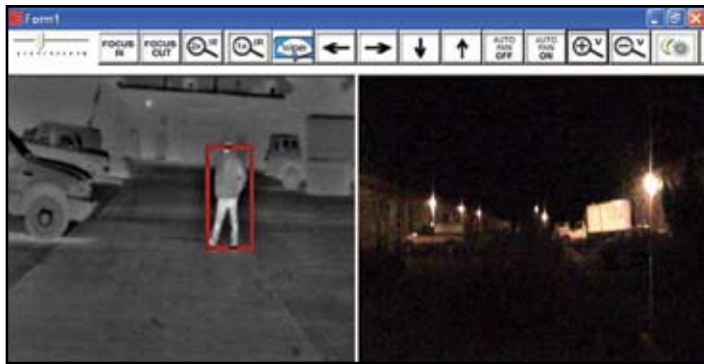


2400xp

The Thermal-Eye 2400xp is the most widely produced dual-sensor (visible and thermal imaging) stationary-mounted camera that offers "Gold-Standard" thermal image quality for security applications. It is available as a fixed-mount camera or with pan & tilt/slew to queue capability.



Man in alley (thermal/visible)



Selected #1 in image quality in recent independent surveys.



Applications:

- Military
- Law enforcement
- Executive security
- Covert operations
- Residential
- Industrial

Benefits:

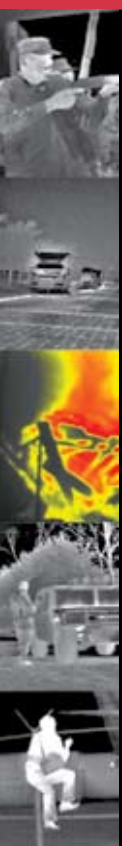
- Provides full-motion and real-time tracking day/night 24x7 video surveillance
- Monitors full perimeter in darkness, in any weather and over long distances
- Ability to integrate multiple systems via fiber optics, the internet (wireless or dedicated phone line) or simply cabling
- User-selectable auto scan with manual and pre-set controls
- Unmanned surveillance ability with intrusion detection alarms
- Saves time, money and resources while providing round-the-clock security and protection

Features:

- "Gold-Standard" BST image quality with clear 320 x 240 resolution
- High-resolution, fully automatic CCD visible camera with 25X optical zoom and 12X digital zoom
- Heavy-duty pan and tilt positioning system
- Optional GUI software defines a region-of-interest, automatically detects motion and provides intruder alarm
- Automatic or manual system control through optional TTL & RS-232 communications GUI software
- Thermostatically controlled heating and cooling; weatherized enclosure with solar shield
- Immunity to damage from solar radiation



Thermal view of truck



2400xp TECHNICAL SPECIFICATIONS:

FEATURES		THERMAL-EYE 2400xp					
		Thermal Imaging Camera			Visible Camera		
Sensor	Material & Structure	Ferroelectric Focal Plane Array — Barium Strontium Titanate (BST) (320 x 240 pixel array)			1/6" IT CCD		
	Spectral Response	7 - 14µm (filter bandwidth)			350nm – 740nm		
	Sensitivity	≤100mK			.01 lux		
	Frame Rate	30Hz NTSC / 25Hz PAL					
Thermal Imaging Performance	Start-up Time	~ 30 seconds (typical) / ~ 90 seconds (maximum)					
	Contrast/Brightness	Automatic or manual (Gain, level and polarity can be remotely controlled)			Automatic or manual (Recommended illumination: .01 to 100,000 lux; minimum illumination: 3.0 lux)		
Optics	Lens Options	75mm f/1	100mm f/1	150mm f/1	2.4mm (wide)	60mm (tele)	
	Field of View (H x V)	12° x 9°	9° x 6.6°	6° x 4.4°	45° x 34°	2.0° x 1.5°	
	Zoom	Electronic zoom 2X with peaking & interpolation			25X optical zoom, plus 12X digital zoom		
	Range to Detect Human Activity	75mm is 3000ft (915m), 100mm is 3700ft (1128m) 150mm is 5900ft (1800m)			N/A		
	Focus	Electronic focus			Electronic focus (Automatic flicker compensation & focusing system)		
Video	Output Format	NTSC or PAL			NTSC or PAL		
System Power	Input Voltage	12VDC					
	Input Power	10amps peak					
Complete System Environmental Characteristics	Operating Temperature (ambient air temperature)	-40°F to +131°F (-40°C to +55°C), Extended with internal heater					
	Storage Temperature	-4°F to +140°F (-20°C to +60°C)					
	Weatherproofing	Watertight to IPX66					
Complete System Physical Characteristics	Size	16" L x 10" W x 21" H (406mm L x 254mm W x 533mm H)					
	Color	White					
	Weight	16 - 35lbs based on system configuration					
Ordering Information NTSC	Thermal-Eye 2400xp	NTSC Camera only	NTSC Camera plus -P&T		NTSC Camera plus -Dual Image w/ Visible Camera -P&T	NTSC Camera plus -P&T -Thermofind & Thermatect software	NTSC Camera plus -Dual Image w/ Visible Camera -P&T -Thermofind & Thermatect software
	75mm lens	2400xp-75	2400xp-75-PT		2400xp-75-D-PT	2400xp-75-PT-SW	2400xp-75-D-PT-SW
	100mm lens	N/A	2400xp-100-PT		2400xp-100-D-PT	2400xp-100-PT-SW	2400xp-100-D-PT-SW
	150mm lens	N/A	2400xp-150-PT		2400xp-150-D-PT	2400xp-150-PT-SW	2400xp-150-D-PT-SW
Ordering Information PAL	Thermal-Eye 2400xp	PAL Camera only	PAL Camera plus -P&T		PAL Camera plus -Dual Image w/ Visible Camera -P&T	PAL Camera plus -P&T -Thermofind & Thermatect software	PAL Camera plus -Dual Image w/ Visible Camera -P&T -Thermofind & Thermatect software
	75mm lens	2400xp-75-P	2400xp-75-PT-P		2400xp-75-D-PT-P	2400xp-75-PT-SW-P	2400xp-75-D-PT-SW-P
	100mm lens	N/A	2400xp-100-PT-P		2400xp-100-D-PT-P	2400xp-100-PT-SW-P	2400xp-100-D-PT-SW-P
	150mm lens	N/A	2400xp-150-PT-P		2400xp-150-D-PT-P	2400xp-150-PT-SW-P	2400xp-150-D-PT-SW-P
Pan and Tilt Functions	Motor Type	Permanent magnet					
	Pan Azimuth Range	± 210° from 0° (420° total)					
	Pan Speed Range	1° - 8° per second					
	Tilt Elevation Range	± 90° from 0° (180° total)					
	Tilt Speed Range	1° - 3° per second					
	Backlash	Adjustable to 0					
	Accuracy	0.25°					

Specifications subject to change without notice

2400xp RevE September 2006

This material is L-3 Infrared Products general capabilities information and does not contain any controlled technical data as defined within the International Traffic in Arms Regulations (ITAR) or Export Administration Regulations (EAR).