

CM-o8o GE / CB-o8o GE Progressive Scan



- *Member of C3 Compact series, covering VGA to UXGA resolution*
- *1032 (h) x 778 (v) 4.65µm square pixels*
- *1/3" progressive scan - Monochrome and Bayer mosaic color versions*
- *30 frames/second with full resolution in continuous operation*
- *Increased frame rate with vertical binning (CM-o8o GE) and partial scan*
- *Exposure time from 84µs to 2 sec. using Pulse Width trigger mode*
- *Programmable exposure from 84µs to 33ms in Full Frame scan*
- *Sequence trigger mode for on-the-fly change of gain, exposure and ROI*
- *LVAL Synchronous/-asynchronous operation (auto-detect)*
- *Auto iris lens video output allows a wider range of light*
- *GigE Vision interface with 10 or 8-bit output*
- *Programmable GPIO with opto-isolated inputs and outputs*
- *Comprehensive software tools and SDK for Windows XP/Vista*

GigETM
VISION

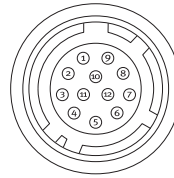
Specifications for CM-o8o GE / CB-o8o GE

Specifications	CM-o8o GE / CB-o8o GE
Sensor	1/3" progressive scan CCD
Pixel Clock	33.75 MHz
Frame rate full frame	30 frames/second
Active area	4.85 (h) x 3.66 (v) mm
Cell size	4.65 (h) x 4.65 (v) μm
Active pixels	1032 (h) x 778 (v)
Color (CB-o8o GE)	Raw Bayer output, host-based interpolation
Read-out modes	Raw Bayer output, host-based interpolation
Full	1032 (h) x 778 (v) 30.08 fps
1/2 partial scan	1032 (h) x 390 (v) 47.82 fps
1/4 partial scan	1032 (h) x 194 (v) 68.10 fps
1/8 partial scan	1032 (h) x 98 (v) 85.80 fps
2/3 partial scan	1032 (h) x 518 (v) 40.08 fps
Vertical binning	1032 (h) x 389 (v) 49.14 fps*
Region-of-interest (ROI)	User Definable. Memory read-out
Sensitivity (CM-o8o GE)	0.3 Lux (On sensor, max. gain, shutter off, 50% video)
Sensitivity (CB-o8o GE)	1.7 Lux (On sensor, max. gain, shutter off, 50% video)
S/N ratio	≥50 dB (0 dB gain)
Video output	GigE Vision, 8-bit or 10-bit
Auto-iris lens video output	0.7 Vp-p, enabled by internal switch
Gain	Manual/Automatic -3dB to +12 dB
Synchronization	Internal X-tal, External hardware trigger via GPIO Software trigger via GigE Vision
GPIO Module	Configurable 14-in/9-out switch (LUT) 12-bit counter based on 25MHz clock or Pixel Clock
Input/output switch	
Clock generator (one)	
Pulse generators (four)	20-bit counters programmable for length, start point, end point, repeat
Hardware trigger modes	Continuous, Pre-Select, Pulse Width, Frame delay, Sequence (Gain, Shutter, ROI)
Electronic shutter	
Pre-set shutter	1/30 to 1/10,000 in 9 steps
Programmable exposure	2L(84.148 μs) to 790L (33.238ms) in 1L steps
Exposure Time (Abs)	μsec – user definable. Same range as PE
Pulse Width	max. 2 sec. (can be set by 100μs unit or Pixel Clock unit)
Control interface	Register based GigE Vision/GenICam compliant
Functions controlled via GigE Vision interface	Shutter, Gain, Black level, Trigger mode, Readout mode, GPIO setup, ROI (GenICam mandatory functions)
GigE Vision streaming control	Packet size (1428 to 4040bytes), Delayed (frame) readout, Inter-packet delay,
Indicators on rear panel	Power / Hardware trigger, GigE link, GigE activity
Operating Temperature	-5°C to +45°C
Humidity (operation)	20 - 85% non-condensing
Storage temp./humidity	-25°C to +60°C / 20 to 85%
Vibration	10G (20Hz to 200 Hz XYZ)
Shock	70G
Regulations	CE (EN 61000-6-2, EN-61000-6-3), FCC part 15 class B, RoHS/WEEE
Power	12V DC +/-10%. 3.6W
Lens mount	C-mount
Dimensions (H x W x L)	29 x 44 x 75 mm
Weight	125 g

*Note: Vertical binning is for CM-o8o GE only

Connector pin-out

DC In / GPIO



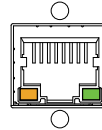
HIROSE HR10A-10R-12PB-01

Connector Pin-out

- Pin 1 GND
- 2 +12 V DC input
- 3 Opto in 2(-)/GND
- 4 Opto in 2(+)* / Auto iris lens
- 5 Opto in 1(-)
- 6 Opto in 1(+)
- 7 Opto out 1(-)
- 8 Opto out 1(+)
- 9 Opto out 2(-)
- 10 Opto out 2(+)
- 11 +12V DC input
- 12 GND

* Pins 3 and 4 can be configured by internal switch selection

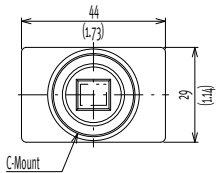
GigE Vision interface Accepts RJ-45 with thumbscrews



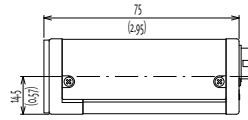
- Pin 1 TRD+(0) 5 TRD-(2)
- 2 TRD-(0) 6 TRD-(1)
- 3 TRD+(1) 7 TRD+(3)
- 4 TRD+(2) 8 TRD-(3)

Dimensions

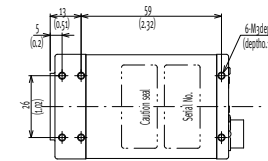
Front view



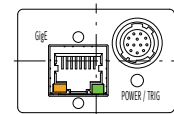
Side view



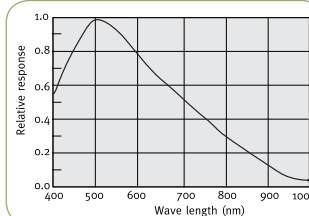
Bottom view



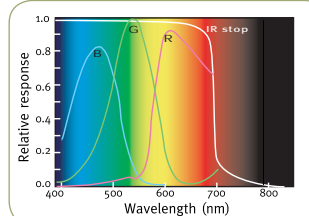
Rear view



Spectral Response CM-o8o GE



Spectral Response CB-o8o GE



Ordering Information

CM-o8o GE 1/3" Monochrome Progressive Scan Camera
CB-o8o GE 1/3" Bayer Mosaic Color Progressive Scan Camera

C3 Camera Suite Unlimited Digital Switchability

Europe, Middle East & Africa
Phone +45 4457 8888
Fax +45 4491 8880

Asia Pacific
Phone +81 45 440 0154
Fax +81 45 440 0166

Americas
Phone (Toll-Free) 1 800 445 5444
Phone +1 408 383 0300



See the possibilities

Visit our web site on www.jai.com

Company and product names mentioned in this datasheet are trademarks or registered trademarks of their respective owners. IAI AS cannot be held responsible for any technical or typographical errors and reserves the right to make changes to products and documentation without prior notification.

310481040805000