

Update!

HAN SERIES

FIREWIRE DIGITAL CAMERA LINEUP

B/W & COLOR

Compact Size

IIDC1.31 compliant

YUV / AWB / Ext. Trigger

Auto Sync. / LUT



20FPS at 1388x1040

IMI HAN SERIES IMB-3145FT/IMC-3145FT

Overview

The HAN SERIES comprises a host of features in an ULTRA COMPACT form factor; while supporting the highest frame rate compared to competing models. The small form factor provides more versatility in space and weight



considerations to benefit the actual operation and installation. Every unit has passed our rigorous testing procedure to ensure reliability; even in mission critical applications.

*FIREWIRE WITH EXTERNAL TRIGGER
AND INDUSTRIAL LOCK SCREW CONNECTOR*



Features

The fully IIDC 1.31 compliant HAN SERIES supports up to 16 FPS at 1600 x 1200 and is rich in features necessary for all applications. The External Trigger supports mode 0, 1, 2, 3, 4, 5 and 12,13, 14 and 15 which are unique compared with others. All models support Photo-coupler and multi camera auto sync, which are ideal for application for multiple cameras, and other advanced features such as memory save/load and one-shot and multi-shot capability. In addition, RS232 Pass through, 1us ~ 3600s shutter speed, True Speed Format 7 Partial Scan, LUT(4point, user defined), horizontal and vertical Binning mode 1x2, 2x2 provide maximum flexibility for challenging applications. The latest HAN SERIES firmware can be upgraded via FIREWIRE, and can be downloaded together with SDK and Demo Applications from our website.



Applications

Machine Vision & ITS(LPR)

Semi Con Inspection

F&B Inspection

Microscopy & Medical

Industrial Analysis

Bar Code, OCR, OCV

For Sales Inquiry and Technical Support ▶



IMI TECHNOLOGY CO., LTD.

#2 Eun-Seok Bldg. 729-1 Yeoksam-Dong

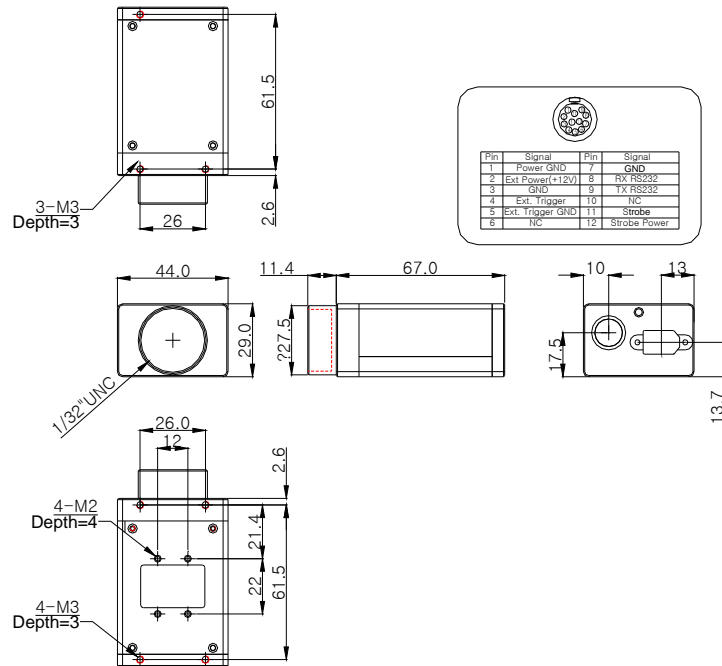
Gangnam-Gu, Seoul 135-080, Korea

Tel : 82-2-527-9800 Fax : 82-2-527-9900

Email : sales@imi-tech.com

Website : www.imi-tech.com

Dimension (in mm)



Specifications



Features	IMB-3145FT	IMC-3145FT
Image Sensor	2/3" progressive scan CCD Sony ICX285AL	2/3" progressive scan CCD Sony ICX285AQ
Picture Size	1388(H) x 1040(V)	1388(H) x 1036(V)
Data Output	Y8, Y16	YUV422, Y8, Y16
Pixel Depth	12 bit	12bit
Pixel Size	6.45 x 6.45 um	6.45 x 6.45 um
FPS at Max resolution	20 FPS(Format 7 mode 0)	20 FPS(Format 7 mode 0)
Scanning System	Progressive Scan	
Binning	2x2, 1x2	Not Supported
Format7	Partial Scan (Unit : 4x4)	
External Trigger	Mode 0, 1, 2, 3, 4, 5,12,13, 14,15 (Photo-coupler)	
Strobe Output	Active Low or High, Support Normal Mode or Trigger Mode (Photo-coupler)	
Memory Save/Load	16 Channels(0:factory, 1~4:feature, 5~15:mode/feature)	
One-shot/Multi-shot	1 Shot ~65,535 Shots	
SIO (RS-232)	IIC v1.31version : Pass Through or IMI-Tech Command	
Digital Interface	IEEE 1394a (6pin) 1 Port	
Transfer Rate	400 Mbps	
Shutter	1 usec ~ 3600 sec (Manual or Auto)	
Gain Control	0~18 dB (Manual or Auto)	
S/N Ratio	56dB or better	
Control Function	Brightness, Sharpness, Gamma, Auto-Exposure, Shutter, Gain, Pan/Tilt, Auto White Balance (only color), LUT (4point, user defined)	
Lens Mount	C Mount	
Supply Voltage & Power	8 VDC~ 30 VDC, 280mA 12V DC	
Dimensions / Weight	44 (W) x 29 (H) x 67 (D) mm / approx. 112 gram	

Note : Specification may be subject to change without notice.

 **IMI TECHNOLOGY CO., LTD.**

Pioneer in Digital Vision Technology

#2 Eun-Seok Bldg. 729-1 Yeoksam-Dong, Gangnam-Gu, Seoul 135-080, Korea,

Tel : 82-2-527-9800 Fax : 82-2-527-9900 Email : sales@imi-tech.com Website : www.imi-tech.com